

## Product datasheet for **TA89008S**

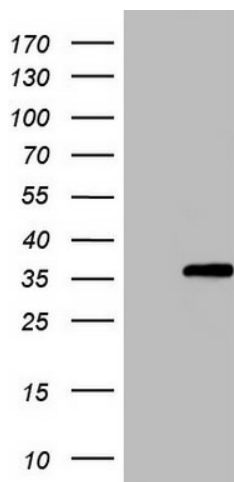
### ZFAND1 Rabbit Polyclonal Antibody

#### Product data:

Product Type:	Primary Antibodies
Applications:	WB
Recommended Dilution:	WB 1:500
Reactivity:	Human
Host:	Rabbit
Isotype:	IgG
Clonality:	Polyclonal
Immunogen:	Synthetic peptide conjugated to KLH derived from within residues 100-170 of Human ZFAND1.
Formulation:	PBS (pH 7.3) containing 1% BSA, 50% glycerol and 0.02% sodium azide.
Concentration:	1 mg/ml
Purification:	Purified from the immunized serum by affinity chromatography (Protein A/G)
Conjugation:	Unconjugated
Storage:	Store at -20°C as received.
Stability:	Stable for 12 months from date of receipt.
Predicted Protein Size:	30.6 kDa
Gene Name:	zinc finger AN1-type containing 1
Database Link:	<a href="#">NP_078975</a> <a href="#">Entrez Gene 79752 Human</a> <a href="#">Q8TCF1</a>
Synonyms:	FLJ14007



[View online »](#)

**Product images:**

HEK293T cells were transfected with the pCMV6-ENTRY control (Cat# [PS100001], Left lane) or pCMV6-ENTRY ZFAND1 (Cat# [RC224679], Right lane) cDNA for 48 hrs and lysed. Equivalent amounts of cell lysates (5 ug per lane) were separated by SDS-PAGE and immunoblotted with anti-ZFAND1 antibody (Cat# [TA890008]). Positive lysates [LY411156] (100ug) and [LC411156] (20ug) can be purchased separately from OriGene.