

## Product datasheet for **TA890004S**

### CHMP4C Rabbit Polyclonal Antibody

#### Product data:

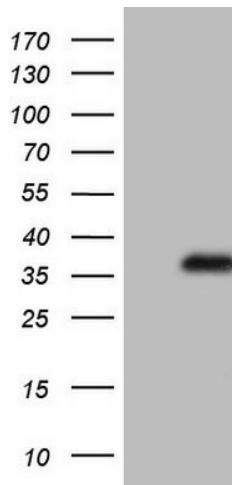
|                         |  |
|-------------------------|--|
| Product Type:           | Primary Antibodies   |
| Applications:           | WB   |
| Recommended Dilution:   | WB 1:500, IHC 1:150  |
| Reactivity:             | Human, Mouse, Rat  |
| Host:                   | Rabbit   |
| Isotype:                | IgG  |
| Clonality:              | Polyclonal   |
| Immunogen:              | Synthetic peptide conjugated to KLH derived from C terminal of Human CHMP4C.   |
| Formulation:            | PBS (pH 7.3) containing 1% BSA, 50% glycerol and 0.02% sodium azide.   |
| Concentration:          | 1 mg/ml  |
| Purification:           | Purified from the immunized serum by affinity chromatography (Protein A/G)   |
| Conjugation:            | Unconjugated   |
| Storage:                | Store at -20°C as received.  |
| Stability:              | Stable for 12 months from date of receipt.   |
| Predicted Protein Size: | 26.2 kDa   |
| Gene Name:              | charged multivesicular body protein 4C   |
| Database Link:          | <a href="#">NP_689497</a><br><a href="#">Entrez Gene 66371</a> <a href="#">MouseEntrez Gene 361916</a> <a href="#">RatEntrez Gene 92421</a> <a href="#">Human Q96CF2</a>   |
| Background:             | CHMP4C belongs to the chromatin-modifying protein/charged multivesicular body protein (CHMP) family. These proteins are components of ESCRT-III (endosomal sorting complex required for transport III), a complex involved in degradation of surface receptor proteins and formation of endocytic multivesicular bodies (MVBs). Some CHMPs have both nuclear and cytoplasmic/vesicular distributions, and one such CHMP, CHMP1A (MIM 164010), is required for both MVB formation and regulation of cell cycle progression (Tsang et al., 2006 [PubMed 16730941]). [supplied by OMIM, Mar |
| Synonyms:               | Shax3; SNF7-3; VPS32C  |



[View online »](#)

Protein Pathways: Endocytosis

**Product images:**



HEK293T cells were transfected with the pCMV6-ENTRY control (Cat# [PS100001], Left lane) or pCMV6-ENTRY CHMP4C (Cat# [RC204802], Right lane) cDNA for 48 hrs and lysed. Equivalent amounts of cell lysates (5 ug per lane) were separated by SDS-PAGE and immunoblotted with anti-CHMP4C antibody (Cat# [TA890004]). Positive lysates [LY407666] (100ug) and [LC407666] (20ug) can be purchased separately from OriGene.