

Product datasheet for **TA890003M**

GAPDH Rabbit Polyclonal Antibody

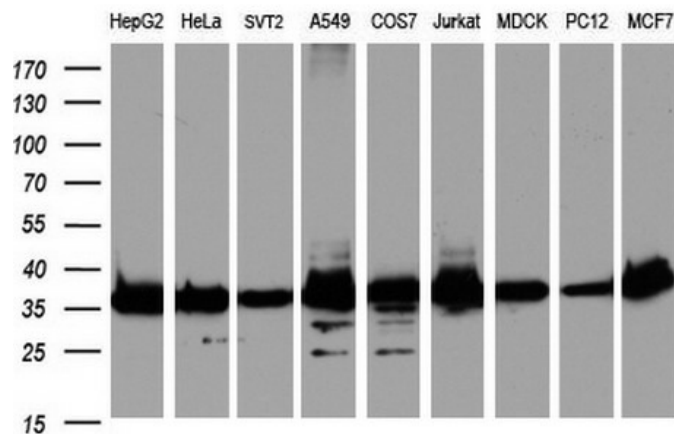
Product data:

| | |
|-----------------------|--|
| Product Type: | Primary Antibodies |
| Applications: | WB |
| Recommended Dilution: | WB 1:2000, IHC 1:150 |
| Reactivity: | Human, Mouse, Rat |
| Host: | Rabbit |
| Isotype: | IgG |
| Clonality: | Polyclonal |
| Immunogen: | Synthetic peptide conjugated to KLH derived from within residues 220 - 290 of Human GAPDH. |
| Formulation: | PBS (pH 7.3) containing 1% BSA, 50% glycerol and 0.02% sodium azide. |
| Concentration: | 1 mg/ml |
| Purification: | Purified from the immunized serum by affinity chromatography (Protein A/G) |
| Conjugation: | Unconjugated |
| Storage: | Store at -20°C as received. |
| Stability: | Stable for 12 months from date of receipt. |
| Gene Name: | glyceraldehyde-3-phosphate dehydrogenase |
| Database Link: | NP_002037 Entrez Gene 14433 Mouse Entrez Gene 24383 Rat Entrez Gene 2597 Human P04406 |
| Background: | The product of this gene catalyzes an important energy-yielding step in carbohydrate metabolism, the reversible oxidative phosphorylation of glyceraldehyde-3-phosphate in the presence of inorganic phosphate and nicotinamide adenine dinucleotide (NAD). The enzyme exists as a tetramer of identical chains. Many pseudogenes similar to this locus are present in the human genome. Two transcript variants encoding different isoforms have been found for this gene. [provided by RefSeq, Feb 2012] |
| Synonyms: | G3PD; GAPD; HEL-S-162eP |
| Protein Families: | ES Cell Differentiation/IPS |


[View online »](#)

Protein Pathways: Alzheimer's disease, Glycolysis / Gluconeogenesis, Metabolic pathways

Product images:



Western blot analysis of extracts (35ug) from 9 different cell lines by using Rabbit Polyclonal anti-GAPDH antibody at 1:2000 dilution. (HepG2: human; HeLa: human; SVT2: mouse; A549: human; COS7: monkey; Jurkat: human; MDCK: canine; PC12: rat; MCF7: human)