

## Product datasheet for **TA890003**

### GAPDH Rabbit Polyclonal Antibody

#### Product data:

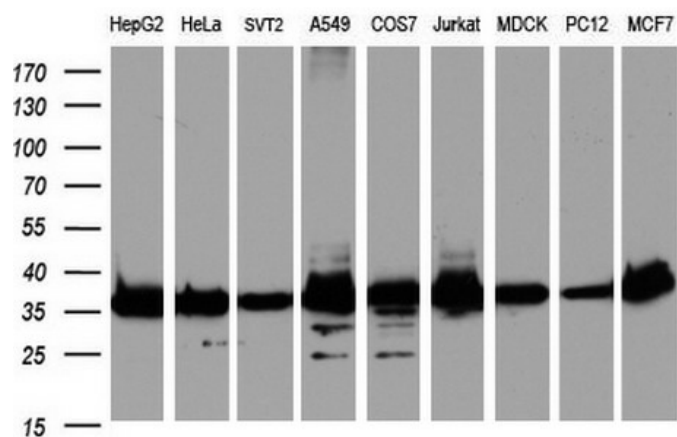
Product Type:	Primary Antibodies
Applications:	WB
Recommended Dilution:	WB 1:2000, IHC 1:150
Reactivity:	Human, Mouse, Rat
Host:	Rabbit
Isotype:	IgG
Clonality:	Polyclonal
Immunogen:	Synthetic peptide conjugated to KLH derived from within residues 220 - 290 of Human GAPDH.
Formulation:	PBS (pH 7.3) containing 1% BSA, 50% glycerol and 0.02% sodium azide.
Concentration:	1 mg/ml
Purification:	Purified from the immunized serum by affinity chromatography (Protein A/G)
Conjugation:	Unconjugated
Storage:	Store at -20°C as received.
Stability:	Stable for 12 months from date of receipt.
Gene Name:	glyceraldehyde-3-phosphate dehydrogenase
Database Link:	<a href="#">NP_002037</a> <a href="#">Entrez Gene 14433 Mouse</a> <a href="#">Entrez Gene 24383 Rat</a> <a href="#">Entrez Gene 2597 Human</a> <a href="#">P04406</a>
Background:	The product of this gene catalyzes an important energy-yielding step in carbohydrate metabolism, the reversible oxidative phosphorylation of glyceraldehyde-3-phosphate in the presence of inorganic phosphate and nicotinamide adenine dinucleotide (NAD). The enzyme exists as a tetramer of identical chains. Many pseudogenes similar to this locus are present in the human genome. Two transcript variants encoding different isoforms have been found for this gene. [provided by RefSeq, Feb 2012]
Synonyms:	G3PD; GAPD; HEL-S-162eP
Protein Families:	ES Cell Differentiation/IPS



[View online »](#)

Protein Pathways: Alzheimer's disease, Glycolysis / Gluconeogenesis, Metabolic pathways

### Product images:



Western blot analysis of extracts (35ug) from 9 different cell lines by using Rabbit Polyclonal anti-GAPDH antibody at 1:2000 dilution. (HepG2: human; HeLa: human; SVT2: mouse; A549: human; COS7: monkey; Jurkat: human; MDCK: canine; PC12: rat; MCF7: human)