

Product datasheet for **TA890001S**

BAX Rabbit Polyclonal Antibody

Product data:

Product Type:	Primary Antibodies
Applications:	IHC, WB
Recommended Dilution:	WB 1:2000, IHC 1:150
Reactivity:	Human, Mouse, Rat
Host:	Rabbit
Isotype:	IgG
Clonality:	Polyclonal
Immunogen:	Synthetic peptide conjugated to KLH derived from within residues 100-170 of Human BAX.
Formulation:	PBS (pH 7.3) containing 1% BSA, 50% glycerol and 0.02% sodium azide.
Concentration:	1 mg/ml
Purification:	Purified from the immunized serum by affinity chromatography (Protein A/G)
Conjugation:	Unconjugated
Storage:	Store at -20°C as received.
Stability:	Stable for 12 months from date of receipt.
Predicted Protein Size:	21 kDa
Gene Name:	BCL2 associated X protein
Database Link:	NP_620116 Entrez Gene 12028 Mouse Entrez Gene 24887 Rat Entrez Gene 581 Human Q07812

Background: The protein encoded by this gene belongs to the BCL2 protein family. BCL2 family members form hetero- or homodimers and act as anti- or pro-apoptotic regulators that are involved in a wide variety of cellular activities. This protein forms a heterodimer with BCL2, and functions as an apoptotic activator. This protein is reported to interact with, and increase the opening of, the mitochondrial voltage-dependent anion channel (VDAC), which leads to the loss in membrane potential and the release of cytochrome c. The expression of this gene is regulated by the tumor suppressor P53 and has been shown to be involved in P53-mediated apoptosis. Multiple alternatively spliced transcript variants, which encode different isoforms, have been reported for this gene. [provided by RefSeq, Jul 2008]



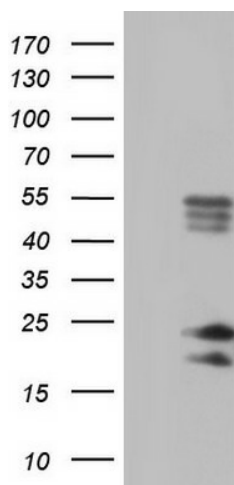
[View online »](#)

Synonyms: BCL2L4

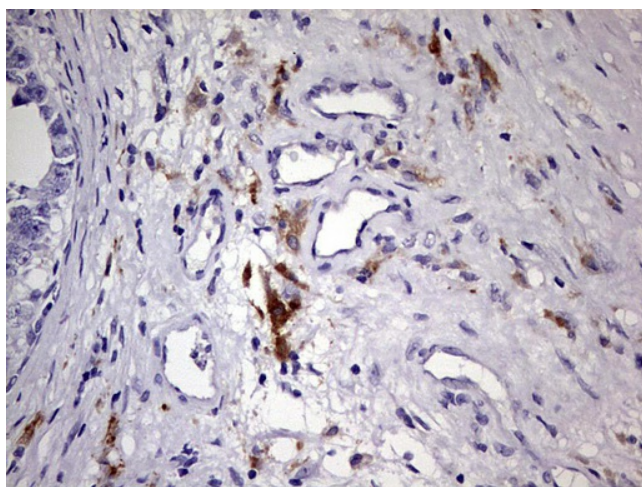
Protein Families: Druggable Genome, Transmembrane

Protein Pathways: Amyotrophic lateral sclerosis (ALS), Apoptosis, Colorectal cancer, Huntington's disease, Neurotrophin signaling pathway, p53 signaling pathway, Pathways in cancer, Prion diseases

Product images:



HEK293T cells were transfected with the pCMV6-ENTRY control (Left lane) or pCMV6-ENTRY BAX ([RC204369], Right lane) cDNA for 48 hrs and lysed. Equivalent amounts of cell lysates (5 ug per lane) were separated by SDS-PAGE and immunoblotted with Rabbit polycl. Positive lysates [LY408504] (100ug) and [LC408504] (20ug) can be purchased separately from OriGene.



Immunohistochemical staining of paraffin-embedded Human testicular cancer tissue using Rabbit polyclonal anti-BAX antibody at (Heat-induced epitope retrieval by 1mM EDTA in 10mM Tris, pH8.5, 120°C for 3min).