

Product datasheet for **TA816498**

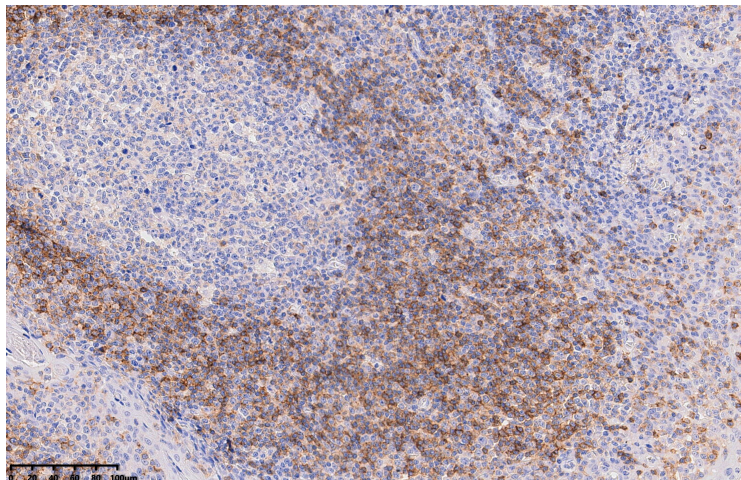
IgD Mouse Monoclonal Antibody [Clone ID: OT12F1]

Product data:

Product Type:	Primary Antibodies
Clone Name:	OT12F1
Applications:	IHC
Recommended Dilution:	IHC 1:1500
Reactivity:	Human
Host:	Mouse
Isotype:	IgG2b
Clonality:	Monoclonal
Immunogen:	Human recombinant protein fragment of Human IgD produced in Ecoli.
Formulation:	PBS (PH 7.3) containing 1% BSA, 50% glycerol and 0.02% sodium azide.
Concentration:	1 mg/ml
Purification:	Purified from mouse ascites fluids or cell culture supernatant by affinity chromatography (protein A/G)
Conjugation:	Unconjugated
Storage:	Shipped at -20°C or with ice packs, Upon delivery store at -20°C. Dilute in PBS(pH7.3) if necessary. Stable for 12 months from date of receipt. Avoid repeated freeze-thaws.
Stability:	Stable for 12 months from date of receipt.



[View online »](#)

Product images:

Immunohistochemical staining of paraffin-embedded Tonsil using anti-IgD mouse monoclonal antibody. (Heat-induced epitope retrieval by 1mM EDTA in 10mM Tris buffer (pH9.0) at 120°C for 3 min, TA816498)