

## Product datasheet for **TA816286S**

### Thymidine Kinase I (TKI) Mouse Monoclonal Antibody [Clone ID: OT117F1]

#### Product data:

<b>Product Type:</b>	Primary Antibodies
<b>Clone Name:</b>	OT117F1
<b>Applications:</b>	WB
<b>Recommended Dilution:</b>	WB 1:500
<b>Reactivity:</b>	Human, Rat
<b>Host:</b>	Mouse
<b>Isotype:</b>	IgG2b
<b>Clonality:</b>	Monoclonal
<b>Immunogen:</b>	Human recombinant protein fragment of Human TK1 (NP_003249) produced in Ecoli.
<b>Formulation:</b>	PBS (PH 7.3) containing 1% BSA, 50% glycerol and 0.02% sodium azide.
<b>Concentration:</b>	1 mg/ml
<b>Purification:</b>	Purified from mouse ascites fluids or tissue culture supernatant by affinity chromatography (protein A/G)
<b>Conjugation:</b>	Unconjugated
<b>Storage:</b>	Shipped at -20°C or with ice packs, Upon delivery store at -20°C. Dilute in PBS(pH7.3) if necessary. Stable for 12 months from date of receipt. Avoid repeated freeze-thaws.
<b>Predicted Protein Size:</b>	25.5kDa
<b>Gene Name:</b>	thymidine kinase 1
<b>Database Link:</b>	<a href="#">Entrez Gene 7083 Human P04183</a>



**Background:**

The protein encoded by this gene is a cytosolic enzyme that catalyzes the addition of a gamma-phosphate group to thymidine. This creates dTMP and is the first step in the biosynthesis of dTTP, which is one component required for DNA replication. The encoded protein, whose levels fluctuate depending on the cell cycle stage, can act as a low activity dimer or a high activity tetramer. High levels of this protein have been used as a biomarker for diagnosing and categorizing many types of cancers. [provided by RefSeq, Oct 2016]

**Product images:**

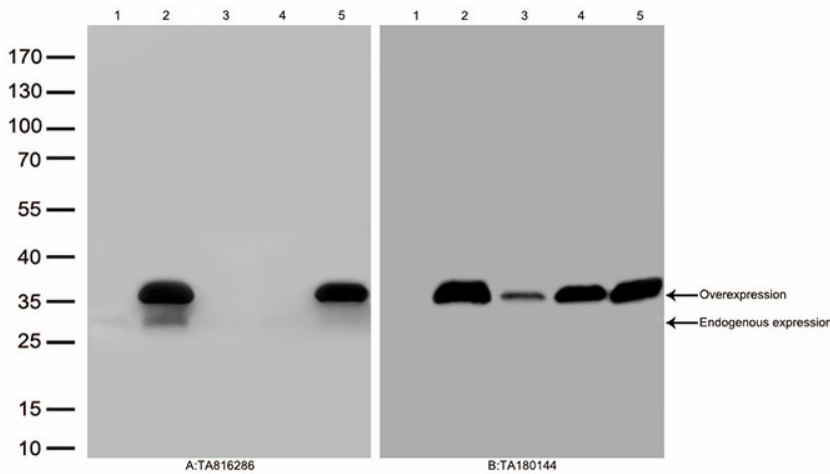
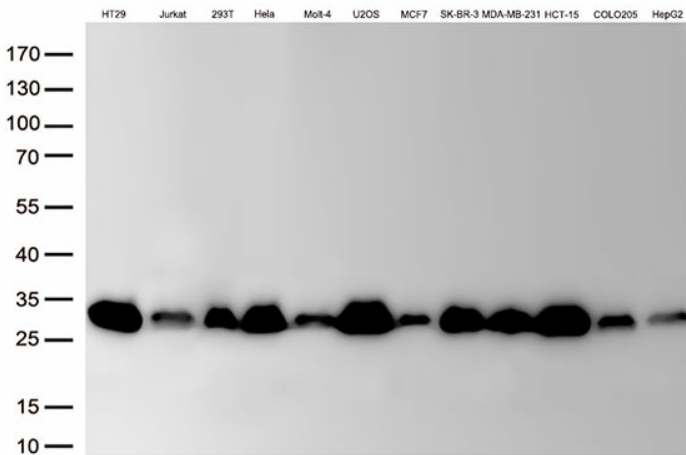


Figure A, Western blot analysis of overexpressed lysates (25ug per lane) from HEK293T cells transfected with empty plasmid ([PS100001], lane 1) , human TK1 plasmid ([RC218280], lane 2), mouse TK1 plasmid ([MR202823], lane 3), mouse TK1 plasmid ([MR202813], lane 4), rat TK1 plasmid ([RR207356], lane 5) using anti-TK1 antibody [TA816286] (1:500). Figure B, Western blot analysis of the same samples as figure A with anti-DDK antibody ([TA180144], 1:1000)



Western blot analysis of extracts (50ug per lane) from 12 cell lines lysates by using anti-TK1 monoclonal antibody([TA816286], 1:500)