

## Product datasheet for **TA815677**

### PLA2R (PLA2R1) Mouse Monoclonal Antibody [Clone ID: OTI13F2]

#### Product data:

|                         |   |
|-------------------------|---|
| Product Type:           | Primary Antibodies  |
| Clone Name:             | OTI13F2   |
| Applications:           | WB  |
| Recommended Dilution:   | WB 1:500  |
| Reactivity:             | Human, Mouse  |
| Host:                   | Mouse   |
| Isotype:                | IgG1  |
| Clonality:              | Monoclonal  |
| Immunogen:              | Human recombinant protein fragment of Human PLA2R1 (NP_001007268) produced in Ecoli.  |
| Formulation:            | PBS (PH 7.3) containing 1% BSA, 50% glycerol and 0.02% sodium azide.  |
| Concentration:          | 1 mg/ml   |
| Purification:           | Purified from mouse ascites fluids or tissue culture supernatant by affinity chromatography (protein A/G)   |
| Conjugation:            | Unconjugated  |
| Storage:                | Shipped at -20°C or with ice packs, Upon delivery store at -20°C. Dilute in PBS(pH7.3) if necessary. Stable for 12 months from date of receipt. Avoid repeated freeze-thaws.  |
| Stability:              | Stable for 12 months from date of receipt.  |
| Predicted Protein Size: | 152.81KD  |
| Gene Name:              | phospholipase A2 receptor 1   |
| Database Link:          | <a href="#">NP_001007268</a><br><a href="#">Entrez Gene 22925 Human</a><br><a href="#">Q13018</a>   |
| Background:             | This gene represents a phospholipase A2 receptor. The encoded protein likely exists as both a transmembrane form and a soluble form. The transmembrane receptor may play a role in clearance of phospholipase A2, thereby inhibiting its action. Polymorphisms at this locus have been associated with susceptibility to idiopathic membranous nephropathy. Alternatively spliced transcript variants encoding different isoforms have been identified.[provided by RefSeq, Sep 2010] |



[View online »](#)

Synonyms: CLEC13C; PLA2-R; PLA2G1R; PLA2IR; PLA2R

Protein Families: Druggable Genome, Transmembrane

### Product images:

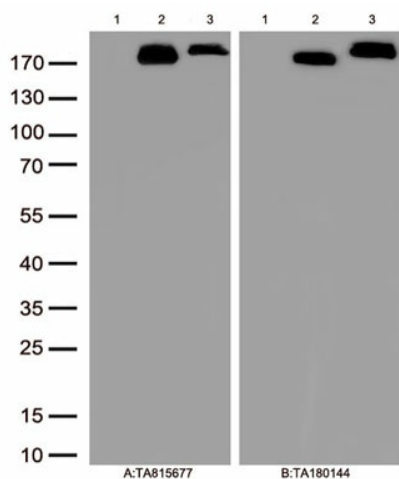


Figure A, Western blot analysis of overexpressed lysates (15ug per lane) from HEK293T cells transfected with empty plasmid ([PS100001], lane 1), human PLA2R1 plasmid ([RC213576], lane 2), mouse PLA2R1 plasmid ([MR220670], lane 3) using anti-PLA2R1 antibody TA815677 (1:500). Figure B, Western blot analysis of the same samples as figure A with anti-DDK antibody ([TA180144], 1:1000)