

Product datasheet for **TA815471M**

Lamin B1 (LMNB1) Mouse Monoclonal Antibody [Clone ID: OTI6E12]

Product data:

Product Type:	Primary Antibodies
Clone Name:	OTI6E12
Applications:	WB
Recommended Dilution:	WB 1:500
Reactivity:	Human, Mouse
Host:	Mouse
Isotype:	IgG1
Clonality:	Monoclonal
Immunogen:	Human recombinant protein fragment of human LMNB1 (NP_005564) produced in E.coli..
Formulation:	PBS (pH 7.3) containing 1% BSA, 50% glycerol and 0.02% sodium azide.
Concentration:	1 mg/ml
Purification:	Purified from mouse ascites fluids or tissue culture supernatant by affinity chromatography (protein A/G)
Conjugation:	Unconjugated
Storage:	Shipped at -20°C or with ice packs, Upon delivery store at -20°C. Dilute in PBS(pH7.3) if necessary. Stable for 12 months from date of receipt. Avoid repeated freeze-thaws.
Stability:	Stable for 12 months from date of receipt.
Predicted Protein Size:	66.4 kDa
Gene Name:	lamin B1
Database Link:	NP_005564 Entrez Gene 16906 Mouse Entrez Gene 4001 Human P20700
Background:	This gene encodes one of the two B-type lamin proteins and is a component of the nuclear lamina. A duplication of this gene is associated with autosomal dominant adult-onset leukodystrophy (ADLD). Alternative splicing results in multiple transcript variants. [provided by RefSeq, Dec 2015]
Synonyms:	ADLD; LMN; LMN2; LMNB; MCPH26


[View online »](#)

Product images:

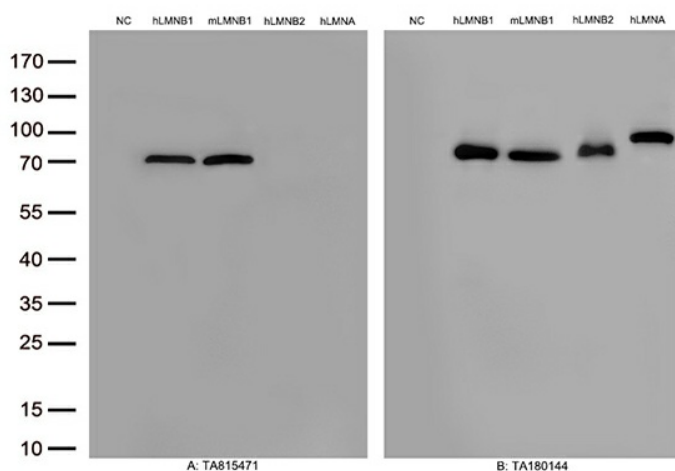


Figure A, Western blot analysis of overexpressed lysates(25ug per lane) from HEK293T cells transfected with empty plasmid ([PS100001], NC) , human LMNB1 plasmid ([RC201604], hLMNB1), mouse LMNB1 plasmid ([MR209179], mLMNB1),human LMNB2 plasmid ([RC200807], hLMNB2), human LMNA plasmid ([RC204970], hLMNA) using anti-LMNB1 antibody [TA815471] (1:500). Figure B, Western blot analysis of the same samples as figure A with anti-DDK antibody ([TA180144], 1:1000)