

## Product datasheet for **TA815471**

### Lamin B1 (LMNB1) Mouse Monoclonal Antibody [Clone ID: OTI6E12]

#### Product data:

|                         |   |
|-------------------------|---|
| Product Type:           | Primary Antibodies  |
| Clone Name:             | OTI6E12   |
| Applications:           | WB  |
| Recommended Dilution:   | WB 1:500  |
| Reactivity:             | Human, Mouse  |
| Host:                   | Mouse   |
| Isotype:                | IgG1  |
| Clonality:              | Monoclonal  |
| Immunogen:              | Human recombinant protein fragment of human LMNB1 (NP_005564 ) produced in E.coli..   |
| Formulation:            | PBS (pH 7.3) containing 1% BSA, 50% glycerol and 0.02% sodium azide.  |
| Concentration:          | 1 mg/ml   |
| Purification:           | Purified from mouse ascites fluids or tissue culture supernatant by affinity chromatography (protein A/G)   |
| Conjugation:            | Unconjugated  |
| Storage:                | Shipped at -20°C or with ice packs, Upon delivery store at -20°C. Dilute in PBS(pH7.3) if necessary. Stable for 12 months from date of receipt. Avoid repeated freeze-thaws.  |
| Stability:              | Stable for 12 months from date of receipt.  |
| Predicted Protein Size: | 66.4 kDa  |
| Gene Name:              | lamin B1  |
| Database Link:          | <a href="#">NP_005564</a><br><a href="#">Entrez Gene 16906 Mouse</a> <a href="#">Entrez Gene 4001 Human</a><br><a href="#">P20700</a>   |
| Background:             | This gene encodes one of the two B-type lamin proteins and is a component of the nuclear lamina. A duplication of this gene is associated with autosomal dominant adult-onset leukodystrophy (ADLD). Alternative splicing results in multiple transcript variants. [provided by RefSeq, Dec 2015] |
| Synonyms:               | ADLD; LMN; LMN2; LMNB; MCPH26   |



[View online »](#)

Product images:

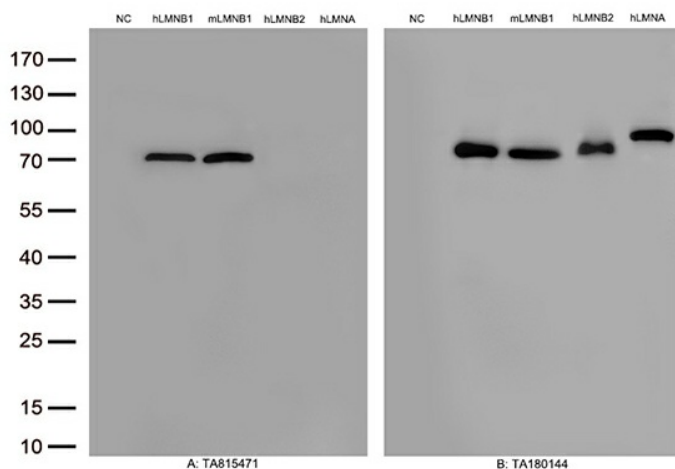


Figure A, Western blot analysis of overexpressed lysates(25ug per lane) from HEK293T cells transfected with empty plasmid ([PS100001], NC), human LMNB1 plasmid ([RC201604], hLMNB1), mouse LMNB1 plasmid ([MR209179], mLMNB1),human LMNB2 plasmid ([RC200807], hLMNB2), human LMNA plasmid ([RC204970], hLMNA) using anti-LMNB1 antibody TA815471(1:500). Figure B, Western blot analysis of the same samples as figure A with anti-DDK antibody ([TA180144], 1:1000)