

Product datasheet for **TA815425S**

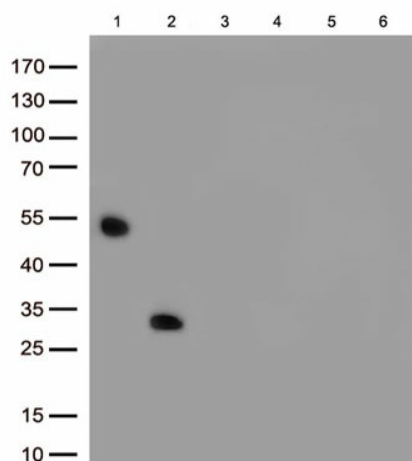
Rabbit IgG Mouse Monoclonal Antibody [Clone ID: OTI5F3]

Product data:

Product Type:	Primary Antibodies
Clone Name:	OTI5F3
Applications:	WB
Recommended Dilution:	WB 1:500
Reactivity:	Rabbit
Host:	Mouse
Isotype:	IgG1
Clonality:	Monoclonal
Immunogen:	Native protein
Formulation:	PBS (pH 7.3) containing 1% BSA, 50% glycerol and 0.02% sodium azide.
Concentration:	1 mg/ml
Purification:	Purified from mouse ascites fluids or tissue culture supernatant by affinity chromatography (protein A/G)
Conjugation:	Unconjugated
Storage:	Shipped at -20°C or with ice packs, Upon delivery store at -20°C. Dilute in PBS(pH7.3) if necessary. Stable for 12 months from date of receipt. Avoid repeated freeze-thaws.
Stability:	Stable for 12 months from date of receipt.
Predicted Protein Size:	55 kDa



[View online »](#)

Product images:

Immunoblot analysis of 6 different native protein (Lane 1.Rabbit IgG; 2.Rabbit IgG Fc; 3.Rabbit kappa light chain; 4.Rabbit lambda light chain; 5.Human IgG; 6.Rat IgG) with [TA815425] at 1:500.