

## Product datasheet for **TA815396**

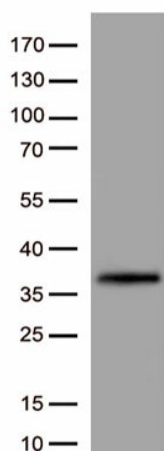
### **SIGLEC15 Mouse Monoclonal Antibody [Clone ID: OTI1B1]**

#### **Product data:**

Product Type:	Primary Antibodies
Clone Name:	OTI1B1
Applications:	WB
Recommended Dilution:	WB 1:500
Reactivity:	Human
Host:	Mouse
Isotype:	IgG1
Clonality:	Monoclonal
Immunogen:	Human recombinant protein fragment of human SIGLEC15 (NP_998767 ) produced in Expi 293F.
Concentration:	1 mg/ml
Purification:	Purified from mouse ascites fluids or tissue culture supernatant by affinity chromatography (protein A/G)
Conjugation:	Unconjugated
Storage:	Shipped at -20°C or with ice packs, Upon delivery store at -20°C. Dilute in PBS(pH7.3) if necessary. Stable for 12 months from date of receipt. Avoid repeated freeze-thaws.
Stability:	Stable for 12 months from date of receipt.
Predicted Protein Size:	35.5 kDa
Gene Name:	sialic acid binding Ig like lectin 15
Database Link:	<a href="#">NP_998767</a> <a href="#">Entrez Gene 284266 Human</a> <a href="#">Q6ZMC9</a>
Background:	Binds sialylated glycoproteins.[UniProtKB/Swiss-Prot Function]
Synonyms:	CD33L3; HsT1361; SIGLEC-15
Protein Families:	Transmembrane



[View online »](#)

**Product images:**

Western blot analysis of recombinant SIGLEC15 protein (0.02ug) by using SIGLEC15 Mouse Monoclonal Antibody (TA815396, 1:500).