

## Product datasheet for **TA815386S**

### IL17F Mouse Monoclonal Antibody [Clone ID: OTI7A2]

#### Product data:

Product Type:	Primary Antibodies
Clone Name:	OTI7A2
Applications:	WB
Recommended Dilution:	WB 1:500
Reactivity:	Human
Host:	Mouse
Isotype:	IgG1
Clonality:	Monoclonal
Immunogen:	Human recombinant protein fragment of human IL17F (NP_443104) produced in E.coli.
Formulation:	PBS (pH 7.3) containing 1% BSA, 50% glycerol and 0.02% sodium azide.
Concentration:	1 mg/ml
Purification:	Purified from mouse ascites fluids or tissue culture supernatant by affinity chromatography (protein A/G)
Conjugation:	Unconjugated
Storage:	Shipped at -20°C or with ice packs, Upon delivery store at -20°C. Dilute in PBS(pH7.3) if necessary. Stable for 12 months from date of receipt. Avoid repeated freeze-thaws.
Stability:	Stable for 12 months from date of receipt.
Predicted Protein Size:	14.9 kDa
Gene Name:	interleukin 17F
Database Link:	<a href="#">NP_443104</a> <a href="#">Entrez Gene 112744 Human</a> <a href="#">Q96PD4</a>
Background:	The protein encoded by this gene is a cytokine that shares sequence similarity with IL17. This cytokine is expressed by activated T cells, and has been shown to stimulate the production of several other cytokines, including IL6, IL8, and CSF2/GM-CSF. This cytokine is also found to inhibit the angiogenesis of endothelial cells and induce endothelial cells to produce IL2, TGFB1/TGFB, and monocyte chemoattractant protein-1. [provided by RefSeq, Jul 2008]



[View online »](#)

Synonyms: CANDF6; IL-17F; ML-1; ML1

Protein Families: Druggable Genome, Secreted Protein

### Product images:

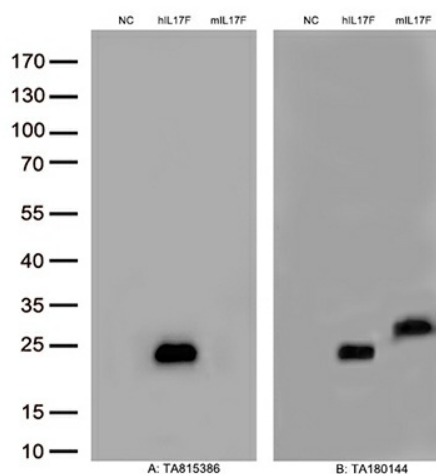


Figure A, Western blot analysis of overexpressed lysates(15ug per lane) from HEK293T cells transfected with empty plasmid ([PS100001], NC) , human IL17F plasmid ([RC209973], hIL17F), mouse IL17F plasmid ([MR225847], mL17F) using anti-IL17F antibody [TA815386] (1:500). Figure B, Western blot analysis of the same samples as figure A with anti-DDK antibody ([TA180144], 1:1000)