

Product datasheet for **TA815385S**

Nav1.5 (SCN5A) Mouse Monoclonal Antibody [Clone ID: OTI5E9]

Product data:

Product Type:	Primary Antibodies
Clone Name:	OTI5E9
Applications:	WB
Recommended Dilution:	WB 1:1000
Reactivity:	Human
Host:	Mouse
Isotype:	IgG1
Clonality:	Monoclonal
Immunogen:	Full length human recombinant protein of human SCN5A (NP_932173) produced in E.coli.
Formulation:	PBS (pH 7.3) containing 1% BSA, 50% glycerol and 0.02% sodium azide.
Concentration:	1 mg/ml
Purification:	Purified from mouse ascites fluids or tissue culture supernatant by affinity chromatography (protein A/G)
Conjugation:	Unconjugated
Storage:	Shipped at -20°C or with ice packs, Upon delivery store at -20°C. Dilute in PBS(pH7.3) if necessary. Stable for 12 months from date of receipt. Avoid repeated freeze-thaws.
Stability:	Stable for 12 months from date of receipt.
Predicted Protein Size:	226.8 kDa
Gene Name:	sodium voltage-gated channel alpha subunit 5
Database Link:	NP_932173 Entrez Gene 6331 Human Q14524
Background:	The protein encoded by this gene is an integral membrane protein and tetrodotoxin-resistant voltage-gated sodium channel subunit. This protein is found primarily in cardiac muscle and is responsible for the initial upstroke of the action potential in an electrocardiogram. Defects in this gene are a cause of long QT syndrome type 3 (LQT3), an autosomal dominant cardiac disease. Alternative splicing results in several transcript variants encoding different isoforms. [provided by RefSeq, Jul 2008]

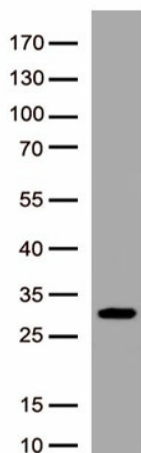


[View online »](#)

Synonyms: CDCD2; CMD1E; CMPD2; HB1; HB2; HBBD; HH1; ICCD; IVF; LQT3; Nav1.5; PFHB1; SSS1; VF1

Protein Families: Druggable Genome, Ion Channels: Sodium, Transmembrane

Product images:



Western blot analysis of recombinant SCN5A protein (0.05ug) by using SCN5A Rabbit Monoclonal Antibody ([TA815385], 1:1000).