

Product datasheet for **TA815255S**

p63 (TP63) Mouse Monoclonal Antibody [Clone ID: OTI2E12]

Product data:

Product Type:	Primary Antibodies
Clone Name:	OTI2E12
Applications:	IHC
Recommended Dilution:	IHC 1:1200
Reactivity:	Human
Host:	Mouse
Isotype:	IgG1
Clonality:	Monoclonal
Immunogen:	Synthetic peptide (the amino acid sequence is considered to be commercially sensitive) within Human p40 (NP_001108452). The exact sequence is proprietary.
Formulation:	PBS (pH 7.3) containing 1% BSA, 50% glycerol and 0.02% sodium azide.
Concentration:	1.00mg/ml
Purification:	Purified from mouse ascites fluids or tissue culture supernatant by affinity chromatography (protein A/G)
Conjugation:	Unconjugated
Storage:	Shipped at -20°C or with ice packs, Upon delivery store at -20°C. Dilute in PBS(pH7.3) if necessary. Stable for 12 months from date of receipt. Avoid repeated freeze-thaws.
Stability:	Stable for 12 months from date of receipt.
Predicted Protein Size:	65.6 kDa
Gene Name:	tumor protein p63
Database Link:	NP_001108452 Entrez Gene 8626 Human Q9H3D4



[View online »](#)

Background:

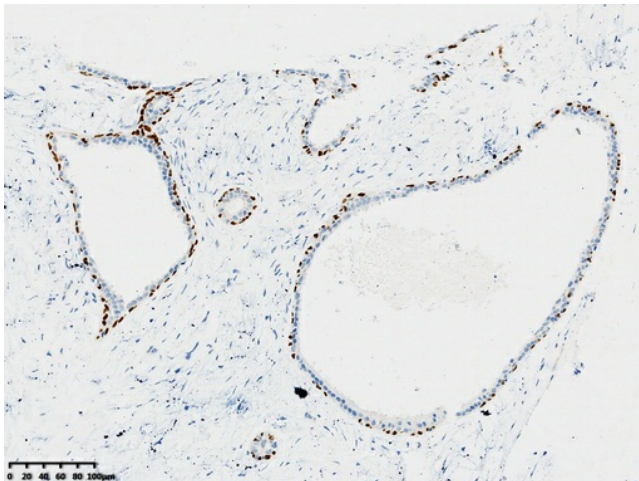
This gene encodes a member of the p53 family of transcription factors. The functional domains of p53 family proteins include an N-terminal transactivation domain, a central DNA-binding domain and an oligomerization domain. Alternative splicing of this gene and the use of alternative promoters results in multiple transcript variants encoding different isoforms that vary in their functional properties. These isoforms function during skin development and maintenance, adult stem/progenitor cell regulation, heart development and premature aging. Some isoforms have been found to protect the germline by eliminating oocytes or testicular germ cells that have suffered DNA damage. Mutations in this gene are associated with ectodermal dysplasia, and cleft lip/palate syndrome 3 (EEC3); split-hand/foot malformation 4 (SHFM4); ankyloblepharon-ectodermal defects-cleft lip/palate; ADULT syndrome (acrodermato-ungual-lacrimal-tooth); limb-mammary syndrome; Rap-Hodgkin syndrome (RHS); and orofacial cleft 8. [provided by RefSeq, Aug 2016]

Synonyms:

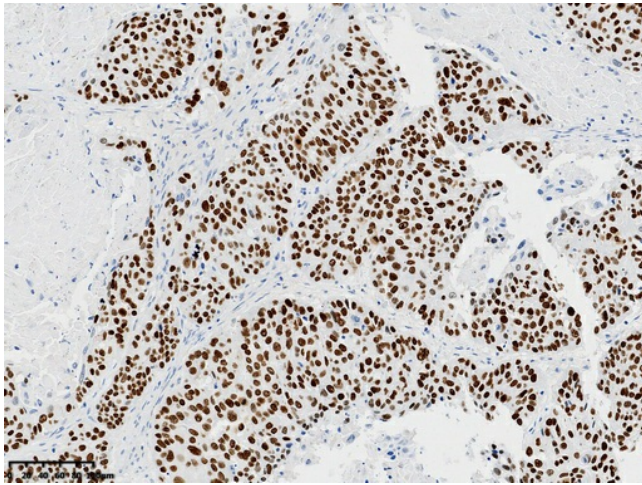
AIS; B(p51A); B(p51B); EEC3; KET; LMS; NBP; OFC8; p40; p51; p53CP; p63; p73H; p73L; RHS; SHFM4; TP53CP; TP53L; TP73L

Protein Families:

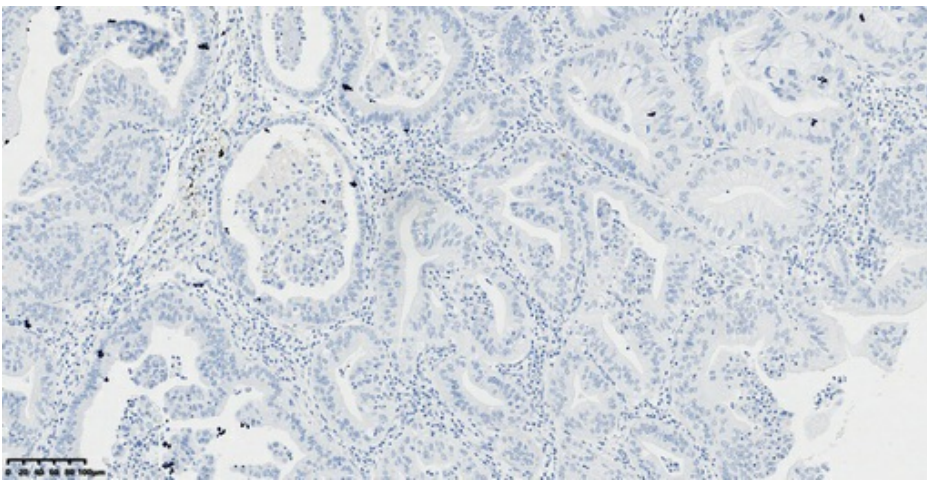
Druggable Genome, Transcription Factors

Product images:

IHC staining of FFPE human breast tissue with in normal limits using anti-P40 (Δ Np63) mouse monoclonal antibody ([TA815255]) and Polink-2 HRP polymer detection kit ([D22-110]). Heat-induced epitope retrieval by EDTA solution buffer pH 9.0 ([B06C-50]) at 120°C for 3 min. The brown stain indicates positive stain, blue is the counter stain.



IHC staining of FFPE human lung squamous cell carcinoma tissue using anti-P40 (Δ Np63) mouse monoclonal antibody ([TA8152555]) and Polink-2 HRP polymer detection kit ([D22-110]). Heat-induced epitope retrieval by EDTA solution buffer pH 9.0 ([B06C-50]) at 120°C for 3 min. The brown stain indicates positive stain, blue is the counter stain.



IHC staining of FFPE human lung adenocarcinoma tissue using anti-P40 (Δ Np63) mouse monoclonal antibody ([TA8152555]) and Polink-2 HRP polymer detection kit ([D22-110]). Heat-induced epitope retrieval by EDTA solution buffer pH 9.0 ([B06C-50]) at 120°C for 3 min. The brown stain indicates positive stain, blue is the counter stain.