

## Product datasheet for **TA815232S**

### **RPE65 Mouse Monoclonal Antibody [Clone ID: OTI6D6]**

#### **Product data:**

Product Type:	Primary Antibodies
Clone Name:	OTI6D6
Applications:	WB
Recommended Dilution:	WB 1:500-1:5000
Reactivity:	Human, Mouse
Host:	Mouse
Isotype:	IgG1
Clonality:	Monoclonal
Immunogen:	Human recombinant protein fragment of human RPE65 (NP_000320) produced in E.coli.
Formulation:	PBS (pH 7.3) containing 1% BSA, 50% glycerol and 0.02% sodium azide.
Concentration:	1 mg/ml
Purification:	Purified from mouse ascites fluids or tissue culture supernatant by affinity chromatography (protein A/G)
Conjugation:	Unconjugated
Storage:	Shipped at -20°C or with ice packs, Upon delivery store at -20°C. Dilute in PBS(pH7.3) if necessary. Stable for 12 months from date of receipt. Avoid repeated freeze-thaws.
Stability:	Stable for 12 months from date of receipt.
Predicted Protein Size:	61.4 kDa
Gene Name:	retinal pigment epithelium-specific protein 65kDa
Database Link:	<a href="#">NP_000320</a> <a href="#">Entrez Gene 19892 Mouse</a> <a href="#">Entrez Gene 6121 Human</a> <a href="#">Q16518</a>



[View online »](#)

**Background:**

The protein encoded by this gene is a component of the vitamin A visual cycle of the retina which supplies the 11-cis retinal chromophore of the photoreceptors opsin visual pigments. It is a member of the carotenoid cleavage oxygenase superfamily. All members of this superfamily are non-heme iron oxygenases with a seven-bladed propeller fold and oxidatively cleave carotenoid carbon:carbon double bonds. However, the protein encoded by this gene has acquired a divergent function that involves the concerted O-alkyl ester cleavage of its all-trans retinyl ester substrate and all-trans to 11-cis double bond isomerization of the retinyl moiety. As such, it performs the essential enzymatic isomerization step in the synthesis of 11-cis retinal. Mutations in this gene are associated with early-onset severe blinding disorders such as Leber congenital. [provided by RefSeq, Oct 2017]

**Synonyms:**

BCO3; LCA2; mRPE65; p63; rd12; RP20; sRPE65

**Protein Families:**

Druggable Genome

**Protein Pathways:**

Retinol metabolism

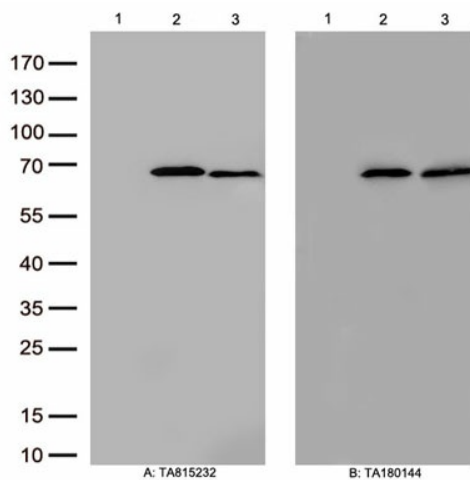
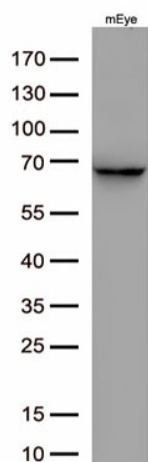
**Product images:**


Figure A, Western blot analysis of overexpressed lysates(15ug per lane) from HEK293T cells transfected with empty plasmid ([PS100001], lane 1) , human RPE65 plasmid ([RC210433], lane 2), mouse RPE65 plasmid ([MR223598], lane 3) using anti-ADAR antibody [TA815232] (1:5000). Figure B, Western blot analysis of the same samples as figure A with anti-DDK antibody ([TA180144], 1:1000)



Western blot analysis of extracts (50ug) from mouse eye lysate by using anti-RPE65 monoclonal antibody([TA815232], 1:500)