

## Product datasheet for **TA815223S**

### IL17E (IL25) Mouse Monoclonal Antibody [Clone ID: OTI1G2]

#### Product data:

Product Type:	Primary Antibodies
Clone Name:	OTI1G2
Applications:	WB
Recommended Dilution:	WB 1:2000
Reactivity:	Human
Host:	Mouse
Isotype:	IgG1
Clonality:	Monoclonal
Immunogen:	Full length human recombinant protein of human IL17E (NP_073626) produced in E.coli.
Formulation:	PBS (pH 7.3) containing 1% BSA, 50% glycerol and 0.02% sodium azide.
Concentration:	1 mg/ml
Purification:	Purified from mouse ascites fluids or tissue culture supernatant by affinity chromatography (protein A/G)
Conjugation:	Unconjugated
Storage:	Shipped at -20°C or with ice packs, Upon delivery store at -20°C. Dilute in PBS(pH7.3) if necessary. Stable for 12 months from date of receipt. Avoid repeated freeze-thaws.
Stability:	Stable for 12 months from date of receipt.
Predicted Protein Size:	20.3 kDa
Gene Name:	interleukin 25
Database Link:	<a href="#">NP_073626</a> <a href="#">Entrez Gene 64806 Human</a> <a href="#">Q9H293</a>
Background:	The protein encoded by this gene is a cytokine that shares sequence similarity with interleukin 17. This cytokine can induce NF-kappaB activation, and stimulate the production of interleukin 8. Both this cytokine and interleukin 17B are ligands for the cytokine receptor IL17BR. Studies of a similar gene in mice suggest that this cytokine may be a pro-inflammatory cytokine favoring the Th2-type immune response. Alternative splicing results in multiple transcript variants. [provided by RefSeq, Mar 2010]



[View online »](#)

**Synonyms:** IL17E

**Protein Families:** Druggable Genome, Secreted Protein, Transmembrane

**Protein Pathways:** Cytokine-cytokine receptor interaction

### Product images:

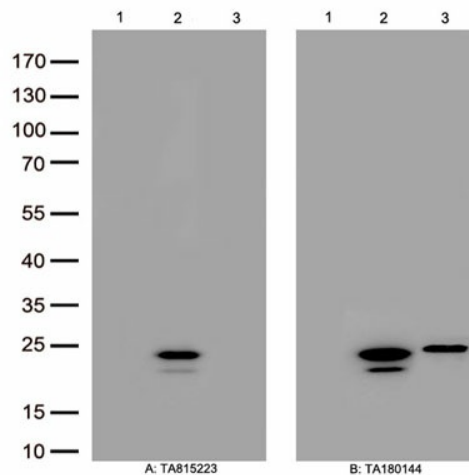


Figure A, Western blot analysis of overexpressed lysates(15ug per lane) from HEK293T cells transfected with empty plasmid ([PS100001], lane 1) , human IL17E plasmid ([RC210141], lane 2), mouse IL17E plasmid ([MR224044], lane 3) using anti-IL17E antibody [TA815223] (1:2000). Figure B, Western blot analysis of the same samples as figure A with anti-DDK antibody ([TA180144], 1:1000)