

## Product datasheet for **TA815024S**

### MAX Mouse Monoclonal Antibody [Clone ID: OTI1D6]

#### Product data:

Product Type:	Primary Antibodies
Clone Name:	OTI1D6
Applications:	WB
Recommended Dilution:	WB 1:500
Reactivity:	Human
Host:	Mouse
Isotype:	IgG1
Clonality:	Monoclonal
Immunogen:	Full length human recombinant protein of human MAX (NP_002373) produced in E.coli.
Formulation:	PBS (pH 7.3) containing 1% BSA, 50% glycerol and 0.02% sodium azide.
Concentration:	1 mg/ml
Purification:	Purified from mouse ascites fluids or tissue culture supernatant by affinity chromatography (protein A/G)
Conjugation:	Unconjugated
Storage:	Shipped at -20°C or with ice packs, Upon delivery store at -20°C. Dilute in PBS(pH7.3) if necessary. Stable for 12 months from date of receipt. Avoid repeated freeze-thaws.
Stability:	Stable for 12 months from date of receipt.
Predicted Protein Size:	18.1 kDa
Gene Name:	MYC associated factor X
Database Link:	<a href="#">NP_002373</a> <a href="#">Entrez Gene 4149 Human</a> <a href="#">P61244</a>



[View online »](#)

**Background:**

The protein encoded by this gene is a member of the basic helix-loop-helix leucine zipper (bHLHZ) family of transcription factors. It is able to form homodimers and heterodimers with other family members, which include Mad, Mxi1 and Myc. Myc is an oncoprotein implicated in cell proliferation, differentiation and apoptosis. The homodimers and heterodimers compete for a common DNA target site (the E box) and rearrangement among these dimer forms provides a complex system of transcriptional regulation. Mutations of this gene have been reported to be associated with hereditary pheochromocytoma. A pseudogene of this gene is located on the long arm of chromosome 7. Alternative splicing results in multiple transcript variants. [provided by RefSeq, Aug 2012]

**Synonyms:**

bHLHd4

**Protein Families:**

Druggable Genome, Transcription Factors

**Protein Pathways:**

MAPK signaling pathway, Pathways in cancer, Small cell lung cancer

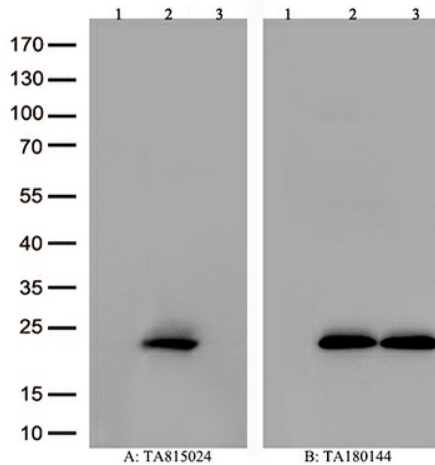
**Product images:**

Figure A, Western blot analysis of overexpressed lysates(15ug per lane) from HEK293T cells transfected with empty plasmid ([PS100001], lane 1) , human MAX plasmid ([RC213128], lane 2), mouse MAX plasmid ([MR223868], lane 3) using anti-MAX antibody [TA815024](1:500). Figure B, Western blot analysis of the same samples as figure A with anti-DDK antibody ([TA180144], 1:1000)