

Product datasheet for **TA814463M**

SARS-CoV-2 S Protein Mouse Monoclonal Antibody [Clone ID: OTI4C6]

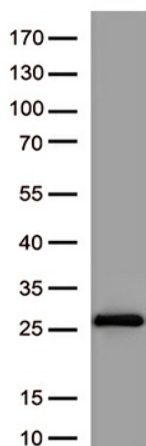
Product data:

Product Type:	Primary Antibodies
Clone Name:	OTI4C6
Applications:	ELISA, WB
Recommended Dilution:	WB 1:500-1000, ELISA 1:5000-10000
Reactivity:	SARS-CoV-2
Host:	Mouse
Isotype:	IgG2a
Clonality:	Monoclonal
Immunogen:	Recombinant SARS-CoV-2 Spike-RBD protein produced in E.coli.
Formulation:	PBS (pH7.3) containing 1% BSA, 50% glycerol and 0.02% sodium azide
Concentration:	1 mg/ml
Purification:	Purified from mouse ascites fluids or tissue culture supernatant by affinity chromatography (protein A/G)
Conjugation:	Unconjugated
Storage:	Shipped at -20°C or with ice packs, Upon delivery store at -20°C. Dilute in PBS(pH7.3) if necessary. Stable for 12 months from date of receipt. Avoid repeated freeze-thaws.
Stability:	Stable for 12 months from date of receipt.
Gene Name:	S Protein
Database Link:	<u>Entrez Gene 43740568 SARS-CoV-2</u>

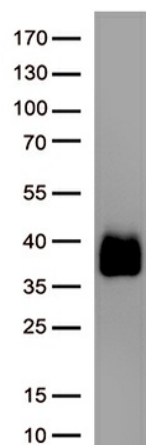


[View online »](#)

Product images:



Western blot analysis of recombinant SARS-CoV-2 Spike-RBD protein (Cat#[TP750182], 0.02ug) by using anti-SARS-CoV-2 spike protein antibody ([TA814463]). (1 \times 1000)



Western blot analysis of recombinant fusion protein of SARS-CoV-2 Spike RBD Protein and Virion Surface Domain of Membrane Protein (Cat#[TP701119], 0.05ug) by using anti-SARS-CoV-2 spike protein antibody ([TA814463]). (1 \times 1000)