

## Product datasheet for **TA814434**

### SARS-CoV-2 N Protein Mouse Monoclonal Antibody [Clone ID: OTI3E1]

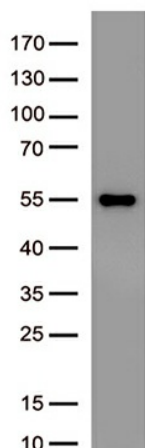
#### Product data:

Product Type:	Primary Antibodies
Clone Name:	OTI3E1
Applications:	ELISA, WB
Recommended Dilution:	WB 1:500-1000, ELISA 1:5000-10000
Reactivity:	SARS-CoV-2
Host:	Mouse
Isotype:	IgG2a
Clonality:	Monoclonal
Immunogen:	Recombinant full length SARS-CoV-2 N protein produced in E.coli.
Formulation:	PBS (pH 7.3) containing 1% BSA, 50% glycerol and 0.02% sodium azide.
Concentration:	1 mg/ml
Purification:	Purified from mouse ascites fluids or tissue culture supernatant by affinity chromatography (protein A/G)
Conjugation:	Unconjugated
Storage:	Shipped at -20°C or with ice packs, Upon delivery store at -20°C. Dilute in PBS(pH7.3) if necessary. Stable for 12 months from date of receipt. Avoid repeated freeze-thaws.
Stability:	Stable for 12 months from date of receipt.
Database Link:	<a href="#">Entrez Gene 43740575 SARS-CoV-2</a>

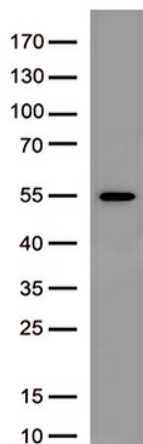


[View online »](#)

## Product images:



Western blot analysis of recombinant full length SARS-CoV-2 N protein (Cat# [TP790189], 0.02ug) by using anti-SARS-CoV-2 N protein antibody (Cat# TA814434). (1:1000)



Western blot analysis of recombinant full length SARS-CoV-2 N protein (Cat# [TP750180], 0.02ug) by using anti-SARS-CoV-2 N protein antibody (Cat# TA814434). (1:1000)