

## Product datasheet for **TA814210**

### MSH2 Mouse Monoclonal Antibody [Clone ID: OTI10F7]

#### Product data:

Product Type:	Primary Antibodies
Clone Name:	OTI10F7
Applications:	IHC
Recommended Dilution:	IHC 1:30
Reactivity:	Human, Mouse, Rat
Host:	Mouse
Isotype:	IgG1
Clonality:	Monoclonal
Immunogen:	Human recombinant protein fragment corresponding to amino acids 1-304 of human MSH2 (NP_000242) produced in E.coli.
Formulation:	PBS (pH 7.3) containing 1% BSA, 50% glycerol and 0.02% sodium azide.
Concentration:	1 mg/ml
Purification:	Purified from mouse ascites fluids or tissue culture supernatant by affinity chromatography (protein A/G)
Conjugation:	Unconjugated
Storage:	Shipped at -20°C or with ice packs, Upon delivery store at -20°C. Dilute in PBS(pH7.3) if necessary. Stable for 12 months from date of receipt. Avoid repeated freeze-thaws.
Stability:	Stable for 12 months from date of receipt.
Predicted Protein Size:	104.7 kDa
Gene Name:	mutS homolog 2
Database Link:	<a href="#">NP_000242</a> <a href="#">Entrez Gene 17685 Mouse</a> <a href="#">Entrez Gene 81709 Rat</a> <a href="#">Entrez Gene 4436 Human</a> <a href="#">P43246</a>
Background:	This locus is frequently mutated in hereditary nonpolyposis colon cancer (HNPCC). When cloned, it was discovered to be a human homolog of the E. coli mismatch repair gene mutS, consistent with the characteristic alterations in microsatellite sequences (RER+ phenotype) found in HNPCC. Two transcript variants encoding different isoforms have been found for this gene. [provided by RefSeq, Apr 2012]



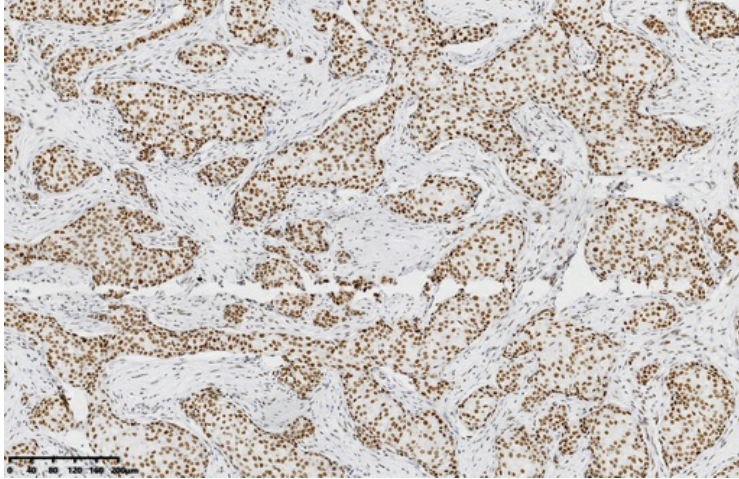
[View online »](#)

**Synonyms:** COCA1; FCC1; hMSH2; HNPCC; HNPCC1; LCF52; MMRCS2

**Protein Families:** Druggable Genome, Stem cell - Pluripotency

**Protein Pathways:** Colorectal cancer, Mismatch repair, Pathways in cancer

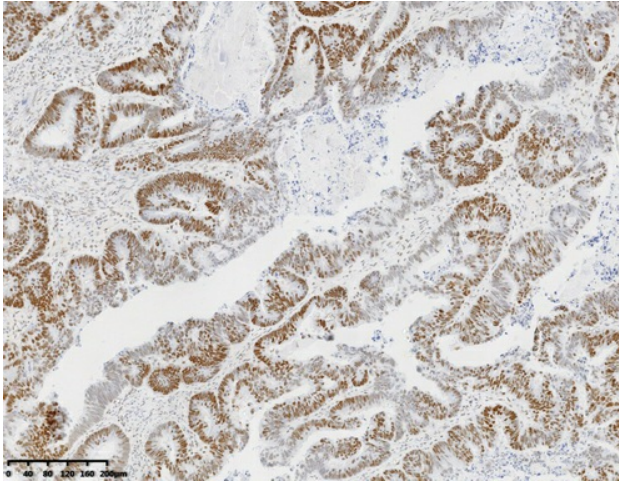
### Product images:



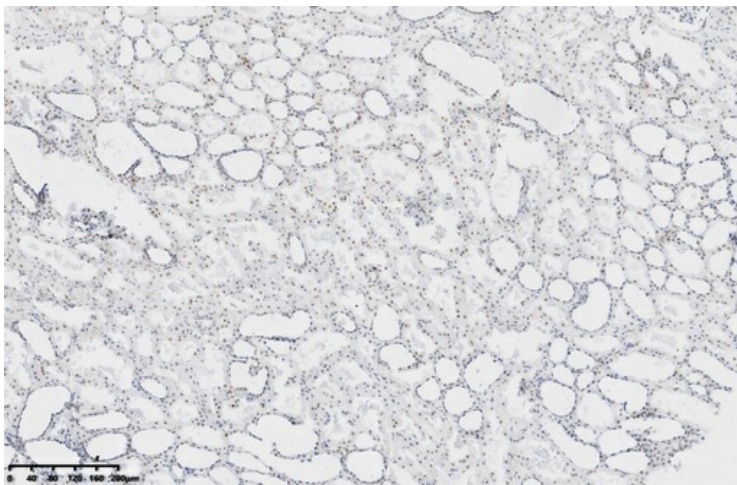
Immunohistochemical staining of paraffin-embedded Adenocarcinoma of Human breast tissue using anti-MSH2 mouse monoclonal antibody. (Heat-induced epitope retrieval by 1mM EDTA in 10mM Tris buffer (pH8.0) at 120°C for 3 min, TA814210)



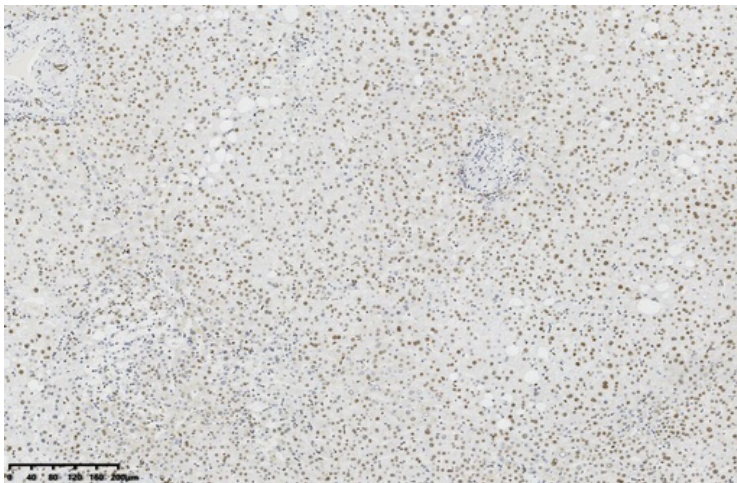
Immunohistochemical staining of paraffin-embedded Human colon tissue within the normal limits using anti-MSH2 mouse monoclonal antibody. (Heat-induced epitope retrieval by 1mM EDTA in 10mM Tris buffer (pH8.0) at 120°C for 3 min, TA814210)



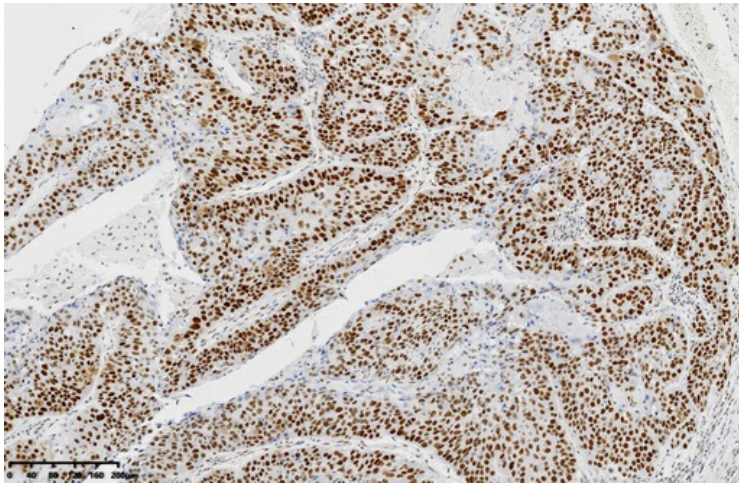
Immunohistochemical staining of paraffin-embedded Adenocarcinoma of Human colon tissue using anti-MSH2 mouse monoclonal antibody. (Heat-induced epitope retrieval by 1mM EDTA in 10mM Tris buffer (pH8.0) at 120°C for 3 min, TA814210)



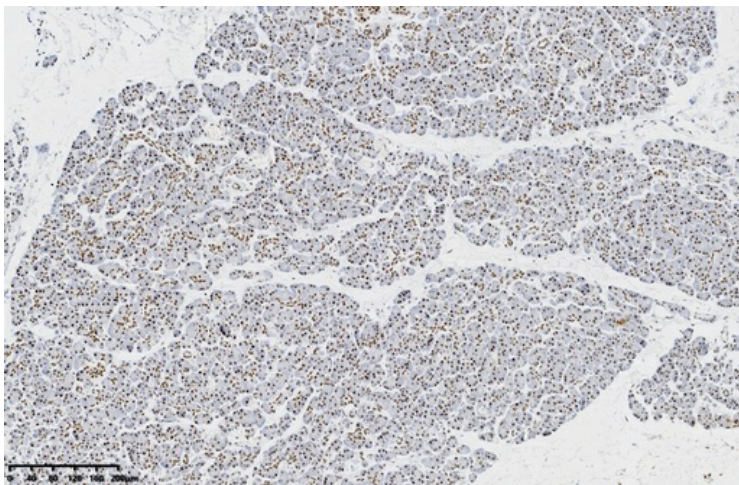
Immunohistochemical staining of paraffin-embedded Human Kidney tissue within the normal limits using anti-MSH2 mouse monoclonal antibody. (Heat-induced epitope retrieval by 1mM EDTA in 10mM Tris buffer (pH8.0) at 120°C for 3 min, TA814210)



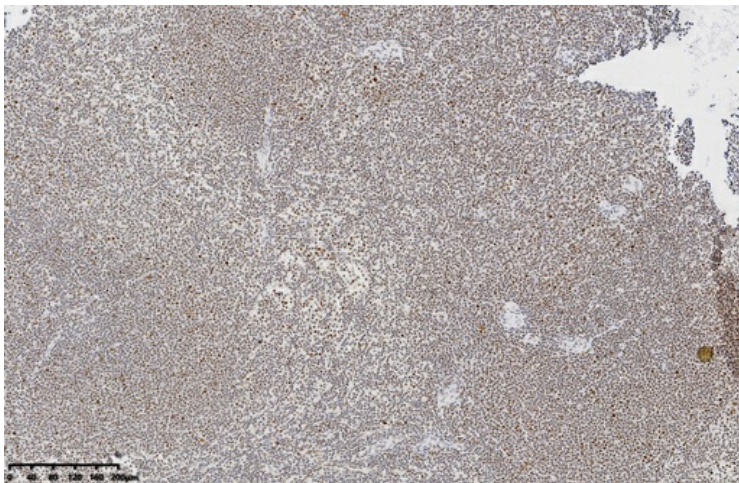
Immunohistochemical staining of paraffin-embedded Human liver tissue within the normal limits using anti-MSH2 mouse monoclonal antibody. (Heat-induced epitope retrieval by 1mM EDTA in 10mM Tris buffer (pH8.0) at 120°C for 3 min, TA814210)



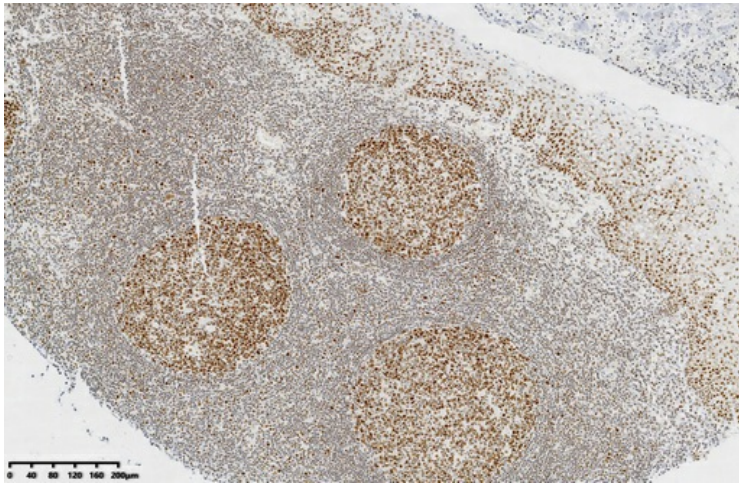
Immunohistochemical staining of paraffin-embedded Carcinoma of Human lung tissue using anti-MSH2 mouse monoclonal antibody. (Heat-induced epitope retrieval by 1mM EDTA in 10mM Tris buffer (pH8.0) at 120°C for 3 min, TA814210)



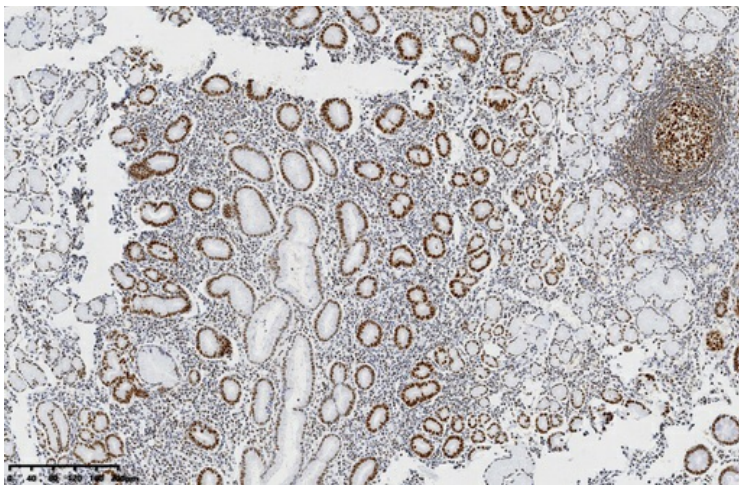
Immunohistochemical staining of paraffin-embedded Human pancreas tissue within the normal limits using anti-MSH2 mouse monoclonal antibody. (Heat-induced epitope retrieval by 1mM EDTA in 10mM Tris buffer (pH8.0) at 120°C for 3 min, TA814210)



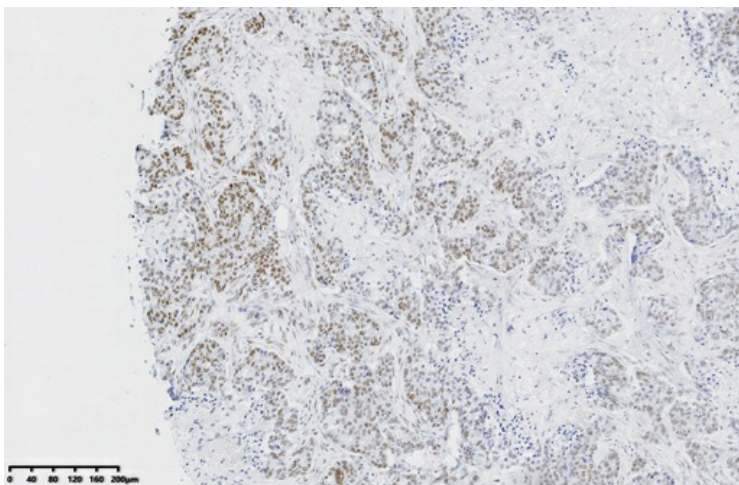
Immunohistochemical staining of paraffin-embedded Human lymphoma tissue using anti-MSH2 mouse monoclonal antibody. (Heat-induced epitope retrieval by 1mM EDTA in 10mM Tris buffer (pH8.0) at 120°C for 3 min, TA814210)



Immunohistochemical staining of paraffin-embedded Human tonsil within the normal limits using anti-MSH2 mouse monoclonal antibody. (Heat-induced epitope retrieval by 1mM EDTA in 10mM Tris buffer (pH8.0) at 120°C for 3 min, TA814210)



Immunohistochemical staining of paraffin-embedded Human gastric tissue within the normal limits using anti-MSH2 mouse monoclonal antibody. (Heat-induced epitope retrieval by 1mM EDTA in 10mM Tris buffer (pH8.0) at 120°C for 3 min, TA814210)



Immunohistochemical staining of paraffin-embedded Human Gastric Carcinoma using anti-MSH2 mouse monoclonal antibody. (Heat-induced epitope retrieval by 1mM EDTA in 10mM Tris buffer (pH8.0) at 120°C for 3 min, TA814210)



Immunohistochemical staining of paraffin-embedded Human appendix tissue within the normal limits using anti-MSH2 mouse monoclonal antibody. (Heat-induced epitope retrieval by 1mM EDTA in 10mM Tris buffer (pH8.0) at 120°C for 3 min, TA814210)