

## Product datasheet for **TA814205**

### CD21 (CR2) Mouse Monoclonal Antibody [Clone ID: OTI3E1]

#### Product data:

Product Type:	Primary Antibodies
Clone Name:	OTI3E1
Applications:	IHC
Recommended Dilution:	IHC 1:300
Reactivity:	Human
Host:	Mouse
Isotype:	IgG1
Clonality:	Monoclonal
Immunogen:	Human recombinant protein fragment corresponding to amino acids 208-587 of human CD21 (NP_001868) produced in E.coli.
Formulation:	PBS (pH 7.3) containing 1% BSA, 50% glycerol and 0.02% sodium azide.
Concentration:	1 mg/ml
Purification:	Purified from mouse ascites fluids or tissue culture supernatant by affinity chromatography (protein A/G)
Conjugation:	Unconjugated
Storage:	Shipped at -20°C or with ice packs, Upon delivery store at -20°C. Dilute in PBS(pH7.3) if necessary. Stable for 12 months from date of receipt. Avoid repeated freeze-thaws.
Stability:	Stable for 12 months from date of receipt.
Predicted Protein Size:	113 kDa
Gene Name:	complement component 3d receptor 2
Database Link:	<a href="#">NP_001868</a> <a href="#">Entrez Gene 1380 Human</a> <a href="#">P20023</a>
Background:	This gene encodes a membrane protein, which functions as a receptor for Epstein-Barr virus (EBV) binding on B and T lymphocytes. Genetic variations in this gene are associated with susceptibility to systemic lupus erythematosus type 9 (SLEB9). Alternatively spliced transcript variants encoding different isoforms have been found for this gene. [provided by RefSeq, Sep 2009]



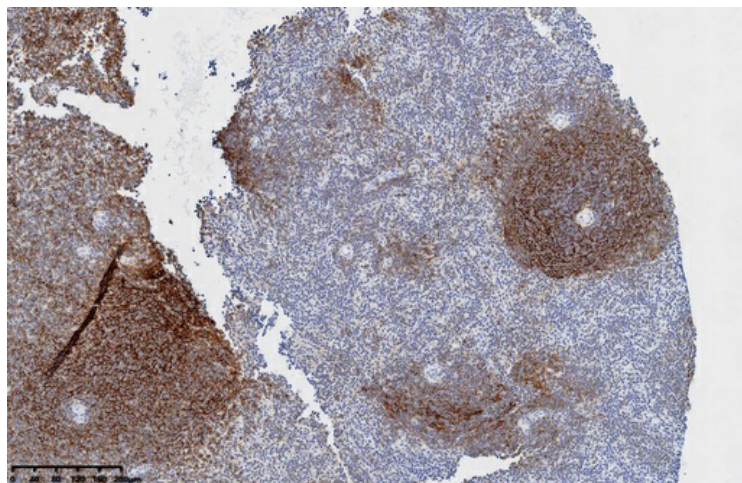
[View online »](#)

**Synonyms:** C3DR; CD21; CR; CVID7; SLEB9

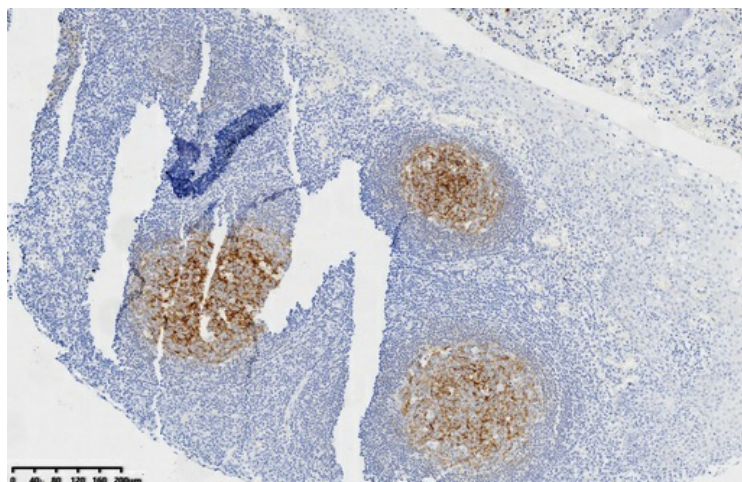
**Protein Families:** Druggable Genome, Transmembrane

**Protein Pathways:** B cell receptor signaling pathway, Complement and coagulation cascades, Hematopoietic cell lineage

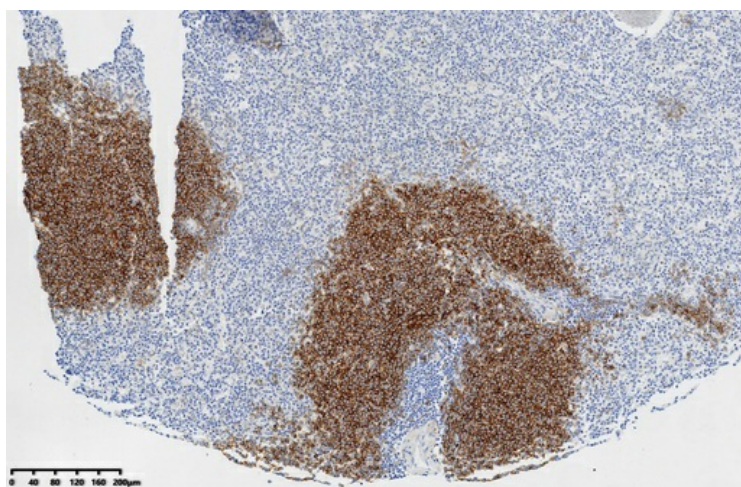
### Product images:



Immunohistochemical staining of paraffin-embedded Human lymphoma tissue using anti-CD21 mouse monoclonal antibody. (Heat-induced epitope retrieval by 1mM EDTA in 10mM Tris buffer (pH8.0) at 120°C for 3 min, TA814205)



Immunohistochemical staining of paraffin-embedded Human tonsil within the normal limits using anti-CD21 mouse monoclonal antibody. (Heat-induced epitope retrieval by 1mM EDTA in 10mM Tris buffer (pH8.0) at 120°C for 3 min, TA814205)



Immunohistochemical staining of paraffin-embedded Human spleen tissue within the normal limits using anti-CD21 mouse monoclonal antibody. (Heat-induced epitope retrieval by 1mM EDTA in 10mM Tris buffer (pH8.0) at 120°C for 3 min, TA814205)