

Product datasheet for **TA814187**

SLP76 (LCP2) Mouse Monoclonal Antibody [Clone ID: OTI7E8]

Product data:

| | |
|-------------------------|--|
| Product Type: | Primary Antibodies |
| Clone Name: | OTI7E8 |
| Applications: | WB |
| Recommended Dilution: | WB 1:500 |
| Reactivity: | Human |
| Host: | Mouse |
| Isotype: | IgG1 |
| Clonality: | Monoclonal |
| Immunogen: | Human recombinant protein fragment of Human LCP2 (NP_005556) produced in Ecoli. |
| Formulation: | PBS (pH 7.3) containing 1% BSA, 50% glycerol and 0.02% sodium azide. |
| Concentration: | 1 mg/ml |
| Purification: | Purified from mouse ascites fluids or tissue culture supernatant by affinity chromatography (protein A/G) |
| Conjugation: | Unconjugated |
| Storage: | Shipped at -20°C or with ice packs, Upon delivery store at -20°C. Dilute in PBS(pH7.3) if necessary. Stable for 12 months from date of receipt. Avoid repeated freeze-thaws. |
| Stability: | Stable for 12 months from date of receipt. |
| Predicted Protein Size: | 60.2 kDa |
| Gene Name: | lymphocyte cytosolic protein 2 |
| Database Link: | NP_005556 Entrez Gene 3937 Human Q13094 |
| Background: | This gene encodes an adapter protein that acts as a substrate of the T cell antigen receptor (TCR)-activated protein tyrosine kinase pathway. The encoded protein associates with growth factor receptor bound protein 2, and is thought to play a role TCR-mediated intracellular signal transduction. A similar protein in mouse plays a role in normal T-cell development and activation. Mice lacking this gene show subcutaneous and intraperitoneal fetal hemorrhaging, dysfunctional platelets and impaired viability. [provided by RefSeq, Nov 2016] |



[View online »](#)

Synonyms: IMD81; SLP-76; SLP76

Protein Pathways: Fc epsilon RI signaling pathway, Natural killer cell mediated cytotoxicity, T cell receptor signaling pathway

Product images:

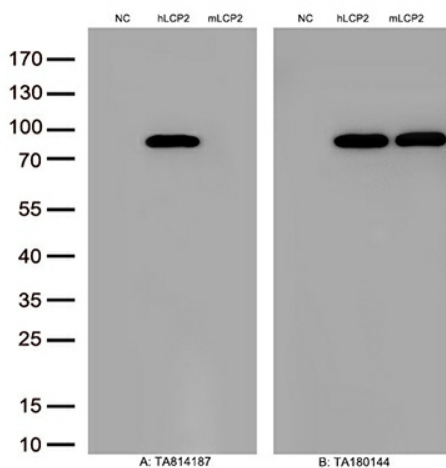


Figure A, Western blot analysis of overexpressed lysates(15ug per lane) from HEK293T cells transfected with empty plasmid ([PS100001], NC), human LCP2 plasmid ([RC204404], hLCP2), mouse LCP2 plasmid ([MR208537], mLCP2) using anti-LCP2 antibody TA814187(1:500). Figure B, Western blot analysis of the same samples as figure A with anti-DDK antibody ([TA180144], 1:1000).