

## Product datasheet for **TA814186S**

### SLP76 (LCP2) Mouse Monoclonal Antibody [Clone ID: OTI8D5]

#### Product data:

Product Type:	Primary Antibodies
Clone Name:	OTI8D5
Applications:	WB
Recommended Dilution:	WB 1:500
Reactivity:	Human, Mouse
Host:	Mouse
Isotype:	IgG1
Clonality:	Monoclonal
Immunogen:	Human recombinant protein fragment of Human LCP2 (NP_005556) produced in Ecoli.
Formulation:	PBS (pH 7.3) containing 1% BSA, 50% glycerol and 0.02% sodium azide.
Concentration:	1 mg/ml
Purification:	Purified from mouse ascites fluids or tissue culture supernatant by affinity chromatography (protein A/G)
Conjugation:	Unconjugated
Storage:	Shipped at -20°C or with ice packs, Upon delivery store at -20°C. Dilute in PBS(pH7.3) if necessary. Stable for 12 months from date of receipt. Avoid repeated freeze-thaws.
Stability:	Stable for 12 months from date of receipt.
Predicted Protein Size:	60.2 kDa
Gene Name:	lymphocyte cytosolic protein 2
Database Link:	<a href="#">NP_005556</a> <a href="#">Entrez Gene 16822 Mouse</a> <a href="#">Entrez Gene 3937 Human</a> <a href="#">Q13094</a>
Background:	This gene encodes an adapter protein that acts as a substrate of the T cell antigen receptor (TCR)-activated protein tyrosine kinase pathway. The encoded protein associates with growth factor receptor bound protein 2, and is thought to play a role TCR-mediated intracellular signal transduction. A similar protein in mouse plays a role in normal T-cell development and activation. Mice lacking this gene show subcutaneous and intraperitoneal fetal hemorrhaging, dysfunctional platelets and impaired viability. [provided by RefSeq, Nov 2016]



[View online »](#)

**Synonyms:** IMD81; SLP-76; SLP76

**Protein Pathways:** Fc epsilon RI signaling pathway, Natural killer cell mediated cytotoxicity, T cell receptor signaling pathway

**Product images:**

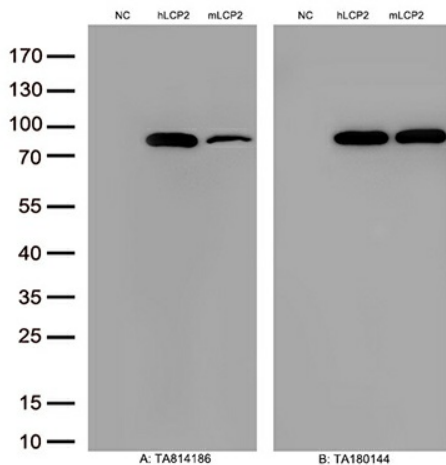


Figure A, Western blot analysis of overexpressed lysates(15ug per lane) from HEK293T cells transfected with empty plasmid ([PS100001], NC), human LCP2 plasmid ([RC204404], hLCP2), mouse LCP2 plasmid ([MR208537], mLCP2) using anti-LCP2 antibody [TA814186](1:500). Figure B, Western blot analysis of the same samples as figure A with anti-DDK antibody ([TA180144], 1:1000).