

## Product datasheet for **TA813846AM**

### **BCMA (TNFRSF17) Mouse Monoclonal Antibody (Biotin conjugated) [Clone ID: OTI11B1]**

#### **Product data:**

Product Type:	Primary Antibodies
Clone Name:	OTI11B1
Applications:	FC
Recommended Dilution:	FC 1:100
Reactivity:	Human
Host:	Mouse
Isotype:	IgG1
Clonality:	Monoclonal
Immunogen:	Recombinant full length protein of human TNFRSF17/BCMA (NP_001183) produced in HEK293 cell.
Formulation:	PBS (pH 7.3) containing 1% BSA, 50% glycerol and 0.02% sodium azide.
Concentration:	0.5 mg/ml
Purification:	Purified from mouse ascites fluids or tissue culture supernatant by affinity chromatography (protein A/G)
Conjugation:	Biotin
Storage:	Store at -20°C as received.
Stability:	Stable for 12 months from date of receipt.
Predicted Protein Size:	20.1 kDa
Gene Name:	tumor necrosis factor receptor superfamily member 17
Database Link:	<a href="#">NP_001183</a> <a href="#">Entrez Gene 608 Human</a> <a href="#">Q02223</a>



[View online »](#)

**Background:**

The protein encoded by this gene is a member of the TNF-receptor superfamily. This receptor is preferentially expressed in mature B lymphocytes, and may be important for B cell development and autoimmune response. This receptor has been shown to specifically bind to the tumor necrosis factor (ligand) superfamily, member 13b (TNFSF13B/TALL-1/BAFF), and to lead to NF-kappaB and MAPK8/JNK activation. This receptor also binds to various TRAF family members, and thus may transduce signals for cell survival and proliferation. [provided by RefSeq, Jul 2008]

**Synonyms:**

BCM; BCMA; CD269; TNFRSF13A

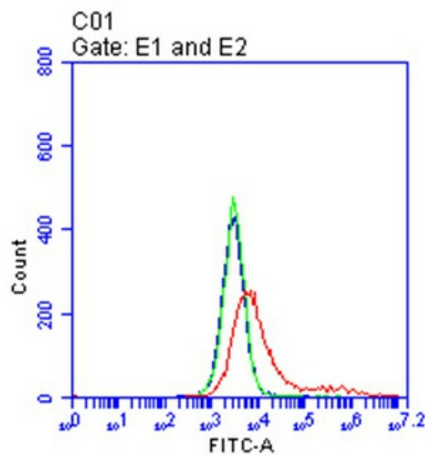
**Protein Families:**

Druggable Genome, Transmembrane

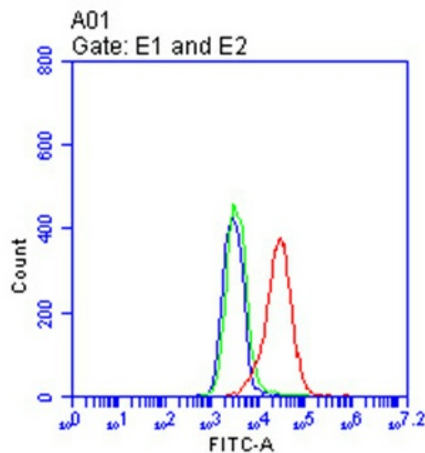
**Protein Pathways:**

Cytokine-cytokine receptor interaction

**Product images:**



Flow cytometric analysis of living 293T cells co-transfected with pCMV6-ENTRY BCMA (Cat# [RC208851]) and pCMV6-ENTRY APRIL (Cat# [RC221008]) cDNAs (Red) or transfected with empty vector (Cat# [PS100001], Blue) using anti-BCMA antibody (Cat# [TA813846]) compared to a nonspecific negative control antibody (Green). (1:100)



Flow cytometric analysis of living RPMI-8226 cells, using anti-BCMA antibody (Cat# [TA813846], Red), compared to an isotype control (green), and a PBS control (blue). (1:100)