

## Product datasheet for **TA813842BM**

### CD38 Mouse Monoclonal Antibody (HRP conjugated) [Clone ID: OTI8D5]

#### Product data:

Product Type:	Primary Antibodies
Clone Name:	OTI8D5
Applications:	FC, WB
Recommended Dilution:	WB 1:1000, FLOW 1:100
Reactivity:	Human
Host:	Mouse
Isotype:	IgG1
Clonality:	Monoclonal
Immunogen:	Full length human recombinant protein of human CD38 (NP_001766) produced in HEK293T cell.
Formulation:	PBS (pH 7.3) containing 1% BSA, 50% glycerol.
Concentration:	0.5 mg/ml
Purification:	Purified from mouse ascites fluids or tissue culture supernatant by affinity chromatography (protein A/G)
Conjugation:	HRP
Storage:	Shipped at -20°C or with ice packs, Upon delivery store at -20°C. Dilute in PBS(pH7.3) if necessary. Stable for 12 months from date of receipt. Avoid repeated freeze-thaws.
Stability:	Stable for 12 months from date of receipt.
Predicted Protein Size:	34.3 kDa
Gene Name:	CD38 molecule
Database Link:	<a href="#">NP_001766</a> <a href="#">Entrez Gene 952 Human</a> <a href="#">P28907</a>
Background:	Synthesizes the second messengers cyclic ADP-ribose and nicotinate-adenine dinucleotide phosphate, the former a second messenger for glucose-induced insulin secretion. Also has cADPr hydrolase activity. Also moonlights as a receptor in cells of the immune system. [UniProtKB/Swiss-Prot Function]



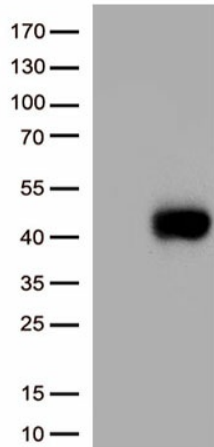
[View online »](#)

**Synonyms:** ADPRC 1; ADPRC1

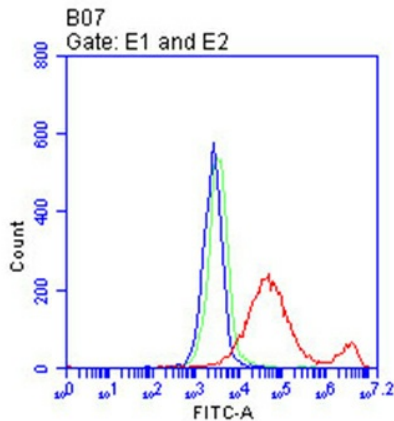
**Protein Families:** Cancer stem cells, Druggable Genome, ES Cell Differentiation/IPS, Induced pluripotent stem cells, Transmembrane

**Protein Pathways:** Calcium signaling pathway, Hematopoietic cell lineage, Metabolic pathways, Nicotinate and nicotinamide metabolism

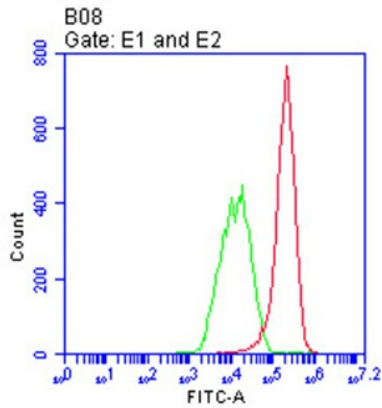
**Product images:**



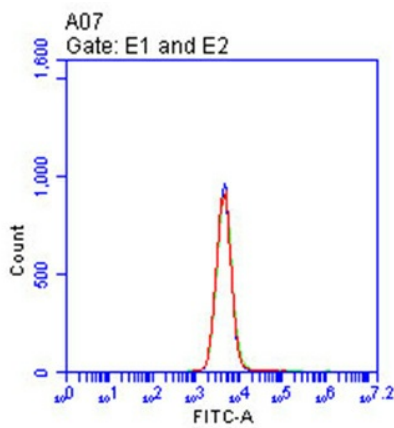
HEK293T cells were transfected with the pCMV6-ENTRY control (Left lane) or pCMV6-ENTRY CD38 ([RC203179], Right lane) cDNA for 48 hrs and lysed. Equivalent amounts of cell lysates (5 ug per lane) were separated by SDS-PAGE and immunoblotted with anti-CD38.(1:1000)



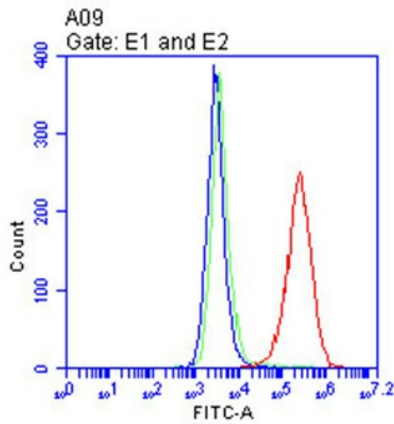
Flow cytometric analysis of living 293T cells transfected with CD38 overexpression plasmid ([RC203179]), Red)/empty vector ([PS100001], Blue) using anti-CD38 antibody ([TA813842]). Cells incubated with a non-specific antibody (Green) were used as isotype control. 10<sup>4</sup> 10<sup>5</sup>



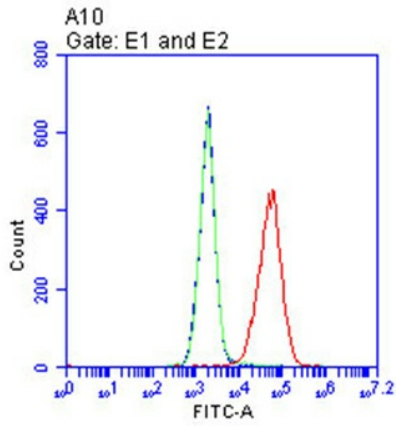
Flow cytometric analysis of living Raji cells, using anti-CD38 antibody([TA813842], Red), compared to an isotype control (green).(1:100)



Flow cytometric analysis of living K562 cells, using anti-CD38 antibody([TA813842], Red), compared to an isotype control (green), and a PBS control (blue).(1:100)



Flow cytometric analysis of living RPMI-8226 cells, using anti-CD38 antibody([TA813842], Red), compared to an isotype control (green), and a PBS control (blue).(1:100)



Flow cytometric analysis of living OPM2 cells, using anti-CD38 antibody([TA813842], Red), compared to an isotype control (green), and a PBS control (blue).(1:100)