

## Product datasheet for **TA813804BM**

### **NSE (ENO2) Mouse Monoclonal Antibody (HRP conjugated) [Clone ID: OTI6E11]**

#### **Product data:**

<b>Product Type:</b>	Primary Antibodies
<b>Clone Name:</b>	OTI6E11
<b>Applications:</b>	IHC
<b>Recommended Dilution:</b>	IHC 1:150
<b>Reactivity:</b>	Human, Mouse, Rat
<b>Host:</b>	Mouse
<b>Isotype:</b>	IgG1
<b>Clonality:</b>	Monoclonal
<b>Immunogen:</b>	Human recombinant protein fragment corresponding to amino acids 188-293 of human NSE (NP_001966) produced in E.coli.
<b>Formulation:</b>	PBS (pH 7.3) containing 1% BSA, 50% glycerol.
<b>Concentration:</b>	0.5 mg/ml
<b>Purification:</b>	Purified from mouse ascites fluids or tissue culture supernatant by affinity chromatography (protein A/G)
<b>Conjugation:</b>	HRP
<b>Storage:</b>	Shipped at -20°C or with ice packs, Upon delivery store at -20°C. Dilute in PBS(pH7.3) if necessary. Stable for 12 months from date of receipt. Avoid repeated freeze-thaws.
<b>Stability:</b>	Stable for 12 months from date of receipt.
<b>Predicted Protein Size:</b>	47.3 kDa
<b>Gene Name:</b>	enolase 2
<b>Database Link:</b>	<a href="#">NP_001966</a> <a href="#">Entrez Gene 13807 Mouse</a> <a href="#">Entrez Gene 24334 Rat</a> <a href="#">Entrez Gene 2026 Human</a> <a href="#">P09104</a>
<b>Background:</b>	This gene encodes one of the three enolase isoenzymes found in mammals. This isoenzyme, a homodimer, is found in mature neurons and cells of neuronal origin. A switch from alpha enolase to gamma enolase occurs in neural tissue during development in rats and primates. [provided by RefSeq, Jul 2008]

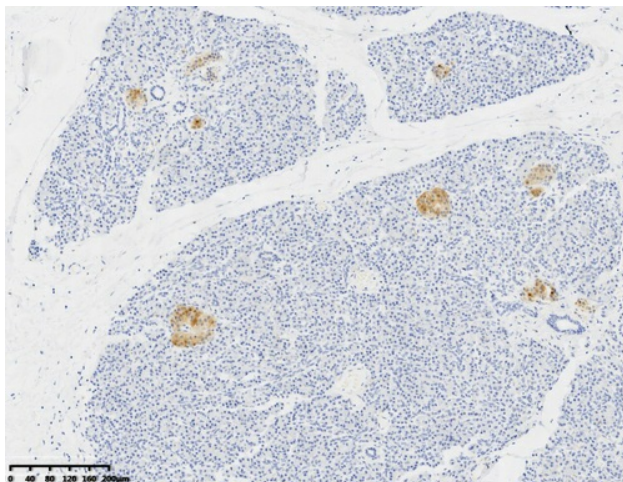


[View online »](#)

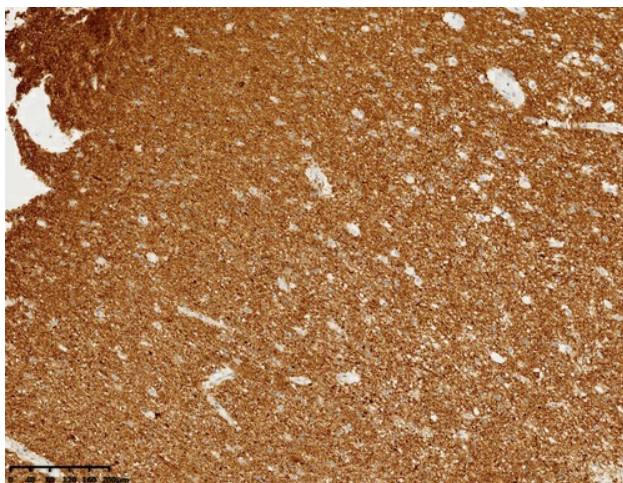
Synonyms: HEL-S-279; NSE

Protein Pathways: Glycolysis / Gluconeogenesis, Metabolic pathways, RNA degradation

### Product images:



Immunohistochemical staining of paraffin-embedded Human pancreas tissue within the normal limits using anti-NSE mouse monoclonal antibody. (Heat-induced epitope retrieval by 1mM EDTA in 10mM Tris buffer (pH8.0) at 120°C for 3 min, [TA813804])



Immunohistochemical staining of paraffin-embedded Human adult brain tissue within the normal limits using anti-NSE mouse monoclonal antibody. (Heat-induced epitope retrieval by 1mM EDTA in 10mM Tris buffer (pH8.0) at 120 oC for 3 min, [TA813804])