

Product datasheet for **TA813770AM**

Syndecan 1 (SDC1) Mouse Monoclonal Antibody (Biotin conjugated) [Clone ID: OTI1C3]

Product data:

Product Type:	Primary Antibodies
Clone Name:	OTI1C3
Applications:	FC
Recommended Dilution:	FLOW 1:100
Reactivity:	Human
Host:	Mouse
Isotype:	IgG1
Clonality:	Monoclonal
Immunogen:	Human recombinant protein fragment corresponding to amino acids 23-254 of human SDC1 (NP_001006947) produced in E.coli.
Formulation:	PBS (pH 7.3) containing 1% BSA, 50% glycerol and 0.02% sodium azide.
Concentration:	0.5 mg/ml
Purification:	Purified from mouse ascites fluids or tissue culture supernatant by affinity chromatography (protein A/G)
Conjugation:	Biotin
Storage:	Shipped at -20°C or with ice packs, Upon delivery store at -20°C. Dilute in PBS(pH7.3) if necessary. Stable for 12 months from date of receipt. Avoid repeated freeze-thaws.
Stability:	Stable for 12 months from date of receipt.
Predicted Protein Size:	32.5 kDa
Gene Name:	syndecan 1
Database Link:	NP_001006947 Entrez Gene 6382 Human P18827



[View online »](#)

Background:

The protein encoded by this gene is a transmembrane (type I) heparan sulfate proteoglycan and is a member of the syndecan proteoglycan family. The syndecans mediate cell binding, cell signaling, and cytoskeletal organization and syndecan receptors are required for internalization of the HIV-1 tat protein. The syndecan-1 protein functions as an integral membrane protein and participates in cell proliferation, cell migration and cell-matrix interactions via its receptor for extracellular matrix proteins. Altered syndecan-1 expression has been detected in several different tumor types. While several transcript variants may exist for this gene, the full-length natures of only two have been described to date. These two represent the major variants of this gene and encode the same protein. [provided by RefSeq, Jul 2008].

Synonyms:

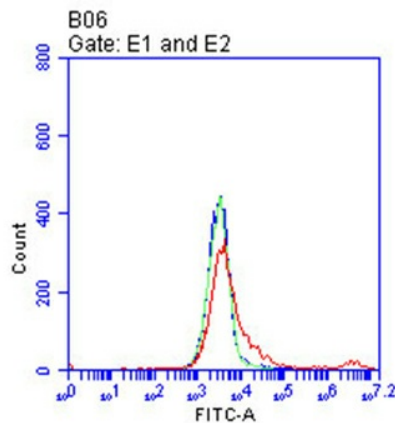
CD138; SDC; SYND1; syndecan

Protein Families:

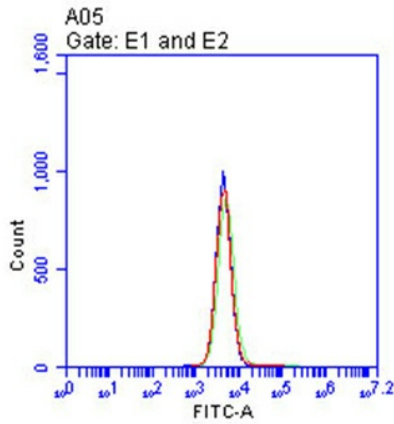
Druggable Genome, ES Cell Differentiation/IPS, Transmembrane

Protein Pathways:

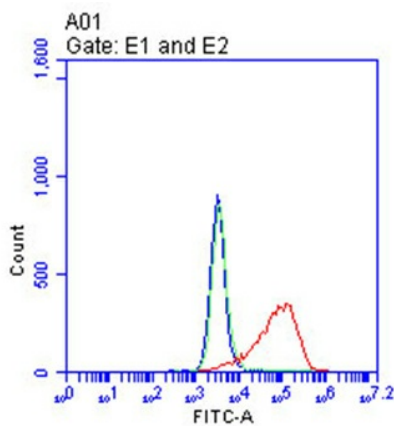
Cell adhesion molecules (CAMs), ECM-receptor interaction

Product images:

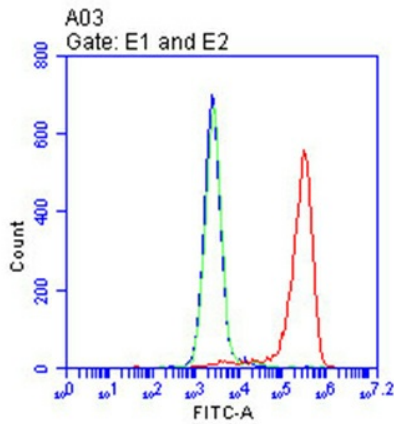
Flow cytometric analysis of living 293T cells transfected with SDC1 overexpression plasmid ([RC217847]), Red/empty vector ([PS100001], Blue) using anti-SDC1 antibody ([TA813770]). Cells incubated with a non-specific antibody (Green) were used as isotype control. $\square 1 \square 100 \square$



Flow cytometric analysis of living K562 cells, using anti-SDC1 antibody([TA813770], Red), compared to an isotype control (green), and a PBS control (blue).(1:100)



Flow cytometric analysis of living RPMI-8226 cells, using anti-SDC1 antibody([TA813770], Red), compared to an isotype control (green), and a PBS control (blue).(1:100)



Flow cytometric analysis of living OPM2 cells, using anti-SDC1 antibody([TA813770], Red), compared to an isotype control (green), and a PBS control (blue).(1:100)