

## Product datasheet for **TA813768M**

### Syndecan 1 (SDC1) Mouse Monoclonal Antibody [Clone ID: OTI5B1]

#### Product data:

|                         |  |
|-------------------------|--|
| Product Type:           | Primary Antibodies   |
| Clone Name:             | OTI5B1   |
| Applications:           | WB   |
| Recommended Dilution:   | WB 1:500-1000  |
| Reactivity:             | Human  |
| Host:                   | Mouse  |
| Isotype:                | IgG1   |
| Clonality:              | Monoclonal   |
| Immunogen:              | Full length human recombinant protein of human SDC1 (NP_001006947) produced in HEK293T cell.   |
| Formulation:            | PBS (pH 7.3) containing 1% BSA, 50% glycerol and 0.02% sodium azide.   |
| Concentration:          | 1 mg/ml  |
| Purification:           | Purified from mouse ascites fluids or tissue culture supernatant by affinity chromatography (protein A/G)  |
| Conjugation:            | Unconjugated   |
| Storage:                | Shipped at -20°C or with ice packs, Upon delivery store at -20°C. Dilute in PBS(pH7.3) if necessary. Stable for 12 months from date of receipt. Avoid repeated freeze-thaws. |
| Stability:              | Stable for 12 months from date of receipt.   |
| Predicted Protein Size: | 32.5 kDa   |
| Gene Name:              | syndecan 1   |
| Database Link:          | <a href="#">NP_001006947</a><br><a href="#">Entrez Gene 6382 Human</a><br><a href="#">P18827</a>   |



[View online »](#)

**Background:**

The protein encoded by this gene is a transmembrane (type I) heparan sulfate proteoglycan and is a member of the syndecan proteoglycan family. The syndecans mediate cell binding, cell signaling, and cytoskeletal organization and syndecan receptors are required for internalization of the HIV-1 tat protein. The syndecan-1 protein functions as an integral membrane protein and participates in cell proliferation, cell migration and cell-matrix interactions via its receptor for extracellular matrix proteins. Altered syndecan-1 expression has been detected in several different tumor types. While several transcript variants may exist for this gene, the full-length nature of only two have been described to date. These two represent the major variants of this gene and encode the same protein. [provided by RefSeq, Jul 2008].

**Synonyms:**

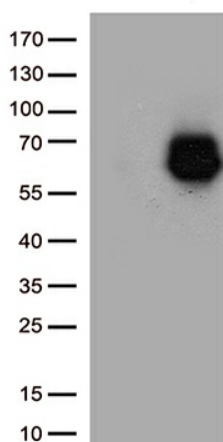
CD138; SDC; SYND1; syndecan

**Protein Families:**

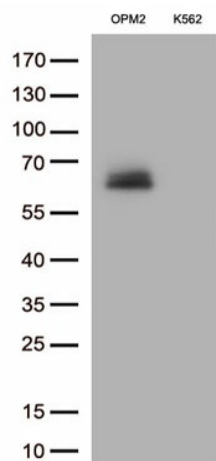
Druggable Genome, ES Cell Differentiation/IPS, Transmembrane

**Protein Pathways:**

Cell adhesion molecules (CAMs), ECM-receptor interaction

**Product images:**


HEK293T cells were transfected with the pCMV6-ENTRY control (Left lane) or pCMV6-ENTRY SDC1 ([RC217847], Right lane) cDNA for 48 hrs and lysed. Equivalent amounts of cell lysates (5 ug per lane) were separated by SDS-PAGE and immunoblotted with anti-SDC1.(1:1000)



Western blot analysis of extracts (35ug) from 2 cell lines lysates by using anti-SDC1 monoclonal antibody. (1:500)