

Product datasheet for **TA813762AM**

CTNND1 Mouse Monoclonal Antibody (Biotin conjugated) [Clone ID: OTI6A11]

Product data:

Product Type:	Primary Antibodies
Clone Name:	OTI6A11
Applications:	IHC
Recommended Dilution:	IHC 1:10
Reactivity:	Human, Mouse, Rat
Host:	Mouse
Isotype:	IgG2b
Clonality:	Monoclonal
Immunogen:	Full length human recombinant protein of human p120-catenin (NP_001078927) produced in E.coli.
Formulation:	PBS (pH 7.3) containing 1% BSA, 50% glycerol and 0.02% sodium azide.
Concentration:	0.5 mg/ml
Purification:	Purified from mouse ascites fluids or tissue culture supernatant by affinity chromatography (protein A/G)
Conjugation:	Biotin
Storage:	Shipped at -20°C or with ice packs, Upon delivery store at -20°C. Dilute in PBS(pH7.3) if necessary. Stable for 12 months from date of receipt. Avoid repeated freeze-thaws.
Stability:	Stable for 12 months from date of receipt.
Predicted Protein Size:	108.2 kDa
Gene Name:	catenin delta 1
Database Link:	NP_001078927 Entrez Gene 12388 MouseEntrez Gene 311163 RatEntrez Gene 1500 Human O60716



[View online »](#)

Background:

This gene encodes a member of the Armadillo protein family, which function in adhesion between cells and signal transduction. Multiple translation initiation codons and alternative splicing result in many different isoforms being translated. Not all of the full-length nature of the described transcript variants have been determined. Read-through transcription also exists between this gene and the neighboring upstream thioredoxin-related transmembrane protein 2 (TMX2) gene. [provided by RefSeq, Dec 2010]

Synonyms:

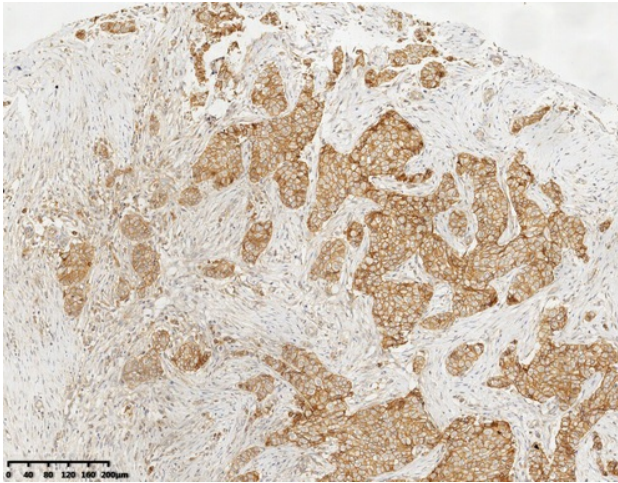
BCDS2; CAS; CTNND; p120; p120(CAS); p120(CTN); P120CAS; P120CTN

Protein Families:

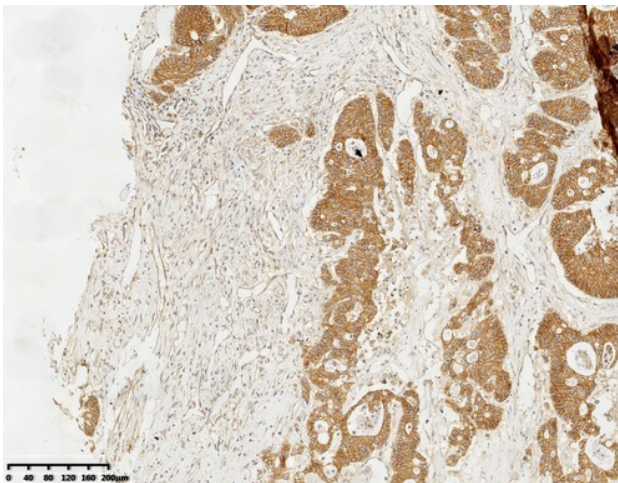
Druggable Genome

Protein Pathways:

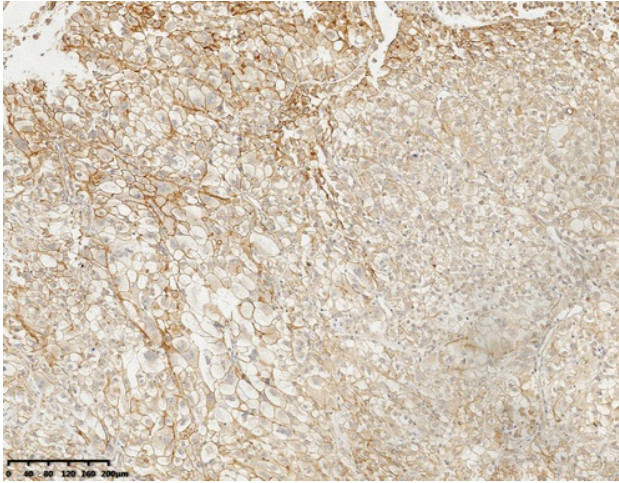
Adherens junction, Leukocyte transendothelial migration

Product images:

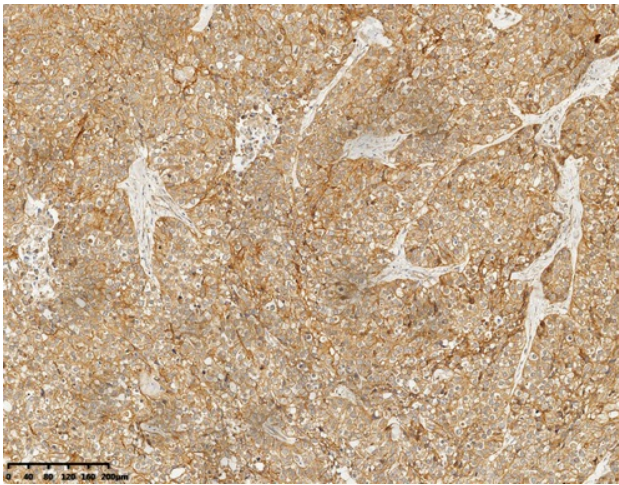
Immunohistochemical staining of paraffin-embedded Adenocarcinoma of Human breast tissue using anti-p120-catenin mouse monoclonal antibody. (Heat-induced epitope retrieval by 1mM EDTA in 10mM Tris buffer (pH8.0) at 120°C for 3 min, [TA813762])



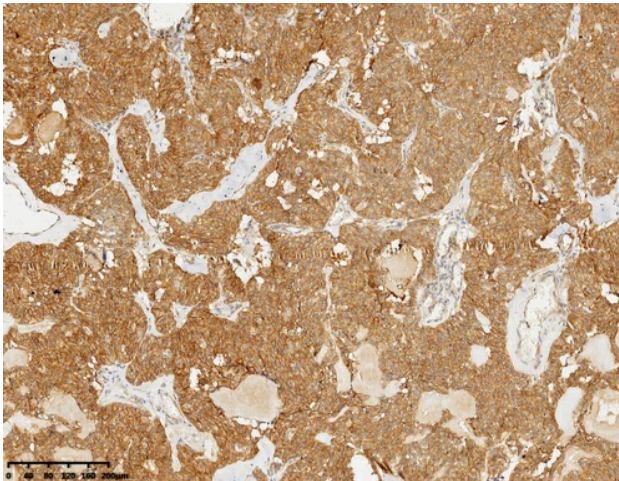
Immunohistochemical staining of paraffin-embedded Adenocarcinoma of Human colon tissue using anti-p120-catenin mouse monoclonal antibody. (Heat-induced epitope retrieval by 1mM EDTA in 10mM Tris buffer (pH8.0) at 120°C for 3 min, [TA813762])



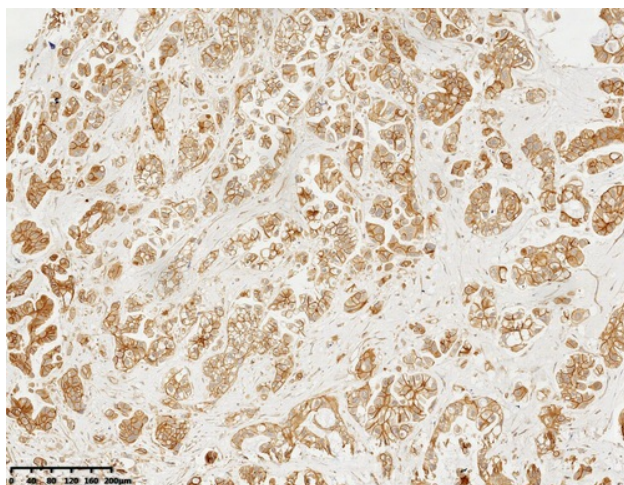
Immunohistochemical staining of paraffin-embedded Carcinoma of Human kidney tissue using anti-p120-catenin mouse monoclonal antibody. (Heat-induced epitope retrieval by 1mM EDTA in 10mM Tris buffer (pH8.0) at 120°C for 3 min, [TA813762])



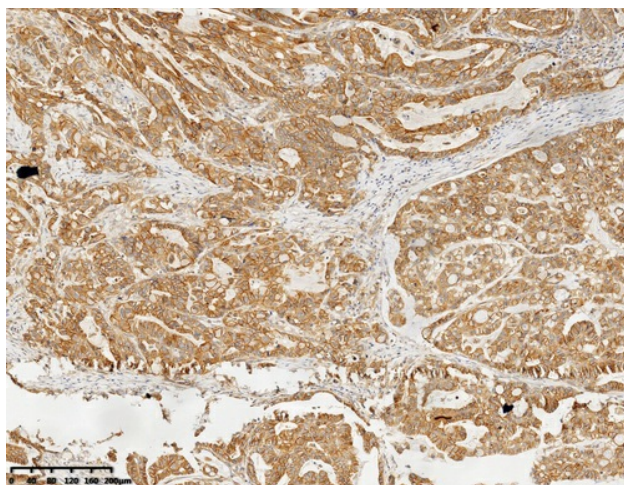
Immunohistochemical staining of paraffin-embedded Carcinoma of Human lung tissue using anti-p120-catenin mouse monoclonal antibody. (Heat-induced epitope retrieval by 1mM EDTA in 10mM Tris buffer (pH8.0) at 120°C for 3 min, [TA813762])



Immunohistochemical staining of paraffin-embedded Carcinoma of Human thyroid tissue using anti-p120-catenin mouse monoclonal antibody. (Heat-induced epitope retrieval by 1mM EDTA in 10mM Tris buffer (pH8.0) at 120°C for 3 min, [TA813762])



Immunohistochemical staining of paraffin-embedded Carcinoma of Human prostate tissue using anti-p120-catenin mouse monoclonal antibody. (Heat-induced epitope retrieval by 1mM EDTA in 10mM Tris buffer (pH8.0) at 120°C for 3 min, [TA813762])



Immunohistochemical staining of paraffin-embedded Human Gastric Carcinoma using anti-p120-catenin mouse monoclonal antibody. (Heat-induced epitope retrieval by 1mM EDTA in 10mM Tris buffer (pH8.0) at 120°C for 3 min, [TA813762])