

Product datasheet for **TA813757**

Syndecan 1 (SDC1) Mouse Monoclonal Antibody [Clone ID: OTI1D3]

Product data:

Product Type:	Primary Antibodies
Clone Name:	OTI1D3
Applications:	IHC
Recommended Dilution:	IHC 1:200
Reactivity:	Human
Host:	Mouse
Isotype:	IgG2b
Clonality:	Monoclonal
Immunogen:	Full length human recombinant protein of human SDC1 (NP_001006947) produced in HEK293T cell.
Formulation:	PBS (pH 7.3) containing 1% BSA, 50% glycerol and 0.02% sodium azide.
Concentration:	1 mg/ml
Purification:	Purified from mouse ascites fluids or tissue culture supernatant by affinity chromatography (protein A/G)
Conjugation:	Unconjugated
Storage:	Shipped at -20°C or with ice packs, Upon delivery store at -20°C. Dilute in PBS(pH7.3) if necessary. Stable for 12 months from date of receipt. Avoid repeated freeze-thaws.
Stability:	Stable for 12 months from date of receipt.
Predicted Protein Size:	32.5 kDa
Gene Name:	syndecan 1
Database Link:	NP_001006947 Entrez Gene 6382 Human P18827



[View online »](#)

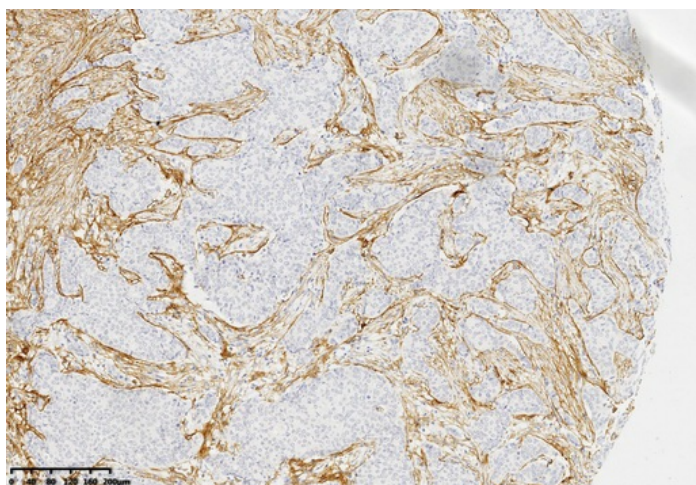
Background: The protein encoded by this gene is a transmembrane (type I) heparan sulfate proteoglycan and is a member of the syndecan proteoglycan family. The syndecans mediate cell binding, cell signaling, and cytoskeletal organization and syndecan receptors are required for internalization of the HIV-1 tat protein. The syndecan-1 protein functions as an integral membrane protein and participates in cell proliferation, cell migration and cell-matrix interactions via its receptor for extracellular matrix proteins. Altered syndecan-1 expression has been detected in several different tumor types. While several transcript variants may exist for this gene, the full-length natures of only two have been described to date. These two represent the major variants of this gene and encode the same protein. [provided by RefSeq, Jul 2008]

Synonyms: CD138; SDC; SYND1; syndecan

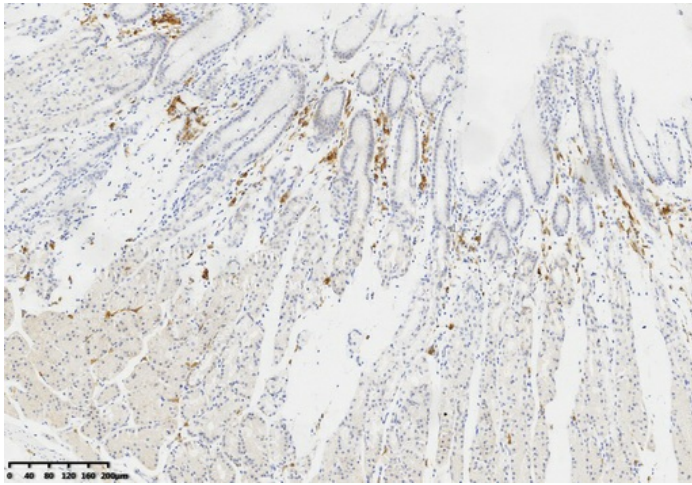
Protein Families: Druggable Genome, ES Cell Differentiation/IPS, Transmembrane

Protein Pathways: Cell adhesion molecules (CAMs), ECM-receptor interaction

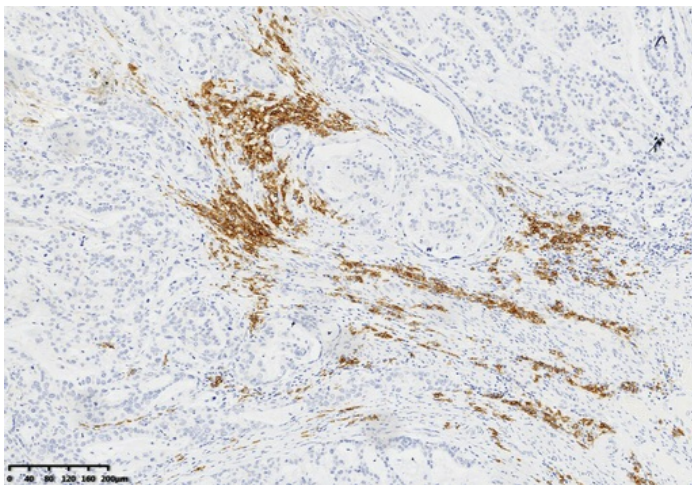
Product images:



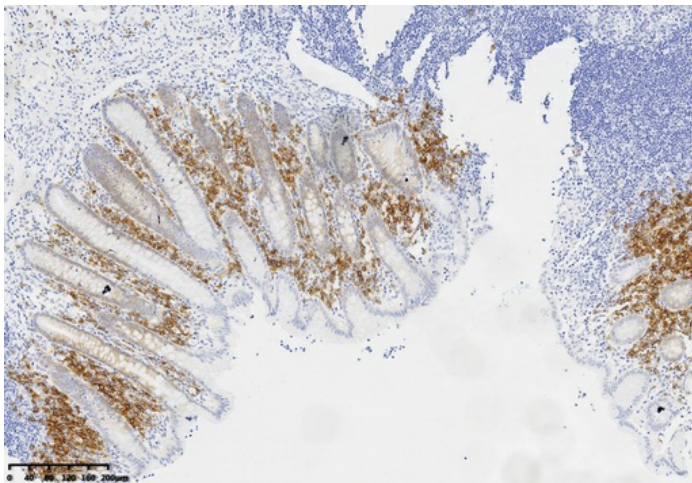
Immunohistochemical staining of paraffin-embedded Adenocarcinoma of Human breast tissue using anti-SDC1 mouse monoclonal antibody. (Heat-induced epitope retrieval by 1mM EDTA in 10mM Tris buffer (pH8.0) at 120°C for 3 min, TA813757)



Immunohistochemical staining of paraffin-embedded Human gastric tissue within the normal limits using anti-SDC1 mouse monoclonal antibody. (Heat-induced epitope retrieval by 1mM EDTA in 10mM Tris buffer (pH8.0) at 120°C for 3 min, TA813757)



Immunohistochemical staining of paraffin-embedded Human Gastric Carcinoma using anti-SDC1 mouse monoclonal antibody. (Heat-induced epitope retrieval by 1mM EDTA in 10mM Tris buffer (pH8.0) at 120°C for 3 min, TA813757)



Immunohistochemical staining of paraffin-embedded Human appendix tissue within the normal limits using anti-SDC1 mouse monoclonal antibody. (Heat-induced epitope retrieval by 1mM EDTA in 10mM Tris buffer (pH8.0) at 120°C for 3 min, TA813757)