

Product datasheet for **TA813687**

CD28 Mouse Monoclonal Antibody [Clone ID: OTI9G10]

Product data:

Product Type:	Primary Antibodies
Clone Name:	OTI9G10
Applications:	FC, WB
Recommended Dilution:	WB 1:500, FLOW 1:100
Reactivity:	Human
Host:	Mouse
Isotype:	IgG1
Clonality:	Monoclonal
Immunogen:	Full length human recombinant protein of human CD28 (NP_006130) produced in HEK293T cell.
Formulation:	PBS (pH 7.3) containing 1% BSA, 50% glycerol and 0.02% sodium azide.
Concentration:	1 mg/ml
Purification:	Purified from mouse ascites fluids or tissue culture supernatant by affinity chromatography (protein A/G)
Conjugation:	Unconjugated
Storage:	Shipped at -20°C or with ice packs, Upon delivery store at -20°C. Dilute in PBS(pH7.3) if necessary. Stable for 12 months from date of receipt. Avoid repeated freeze-thaws.
Stability:	Stable for 12 months from date of receipt.
Predicted Protein Size:	25.1 kDa
Gene Name:	CD28 molecule
Database Link:	NP_006130 Entrez Gene 940 Human P10747
Background:	The protein encoded by this gene is essential for T-cell proliferation and survival, cytokine production, and T-helper type-2 development. Several alternatively spliced transcript variants encoding different isoforms have been found for this gene.[provided by RefSeq, Jul 2011]
Synonyms:	Tp44

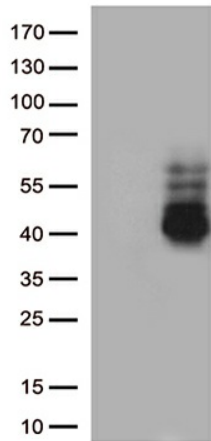


[View online »](#)

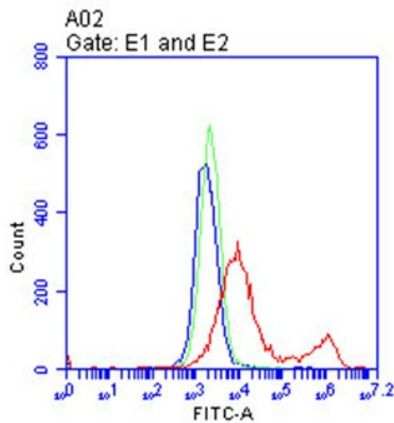
Protein Families: Druggable Genome, Transmembrane

Protein Pathways: Allograft rejection, Autoimmune thyroid disease, Cell adhesion molecules (CAMs), Graft-versus-host disease, Systemic lupus erythematosus, T cell receptor signaling pathway, Type I diabetes mellitus, Viral myocarditis

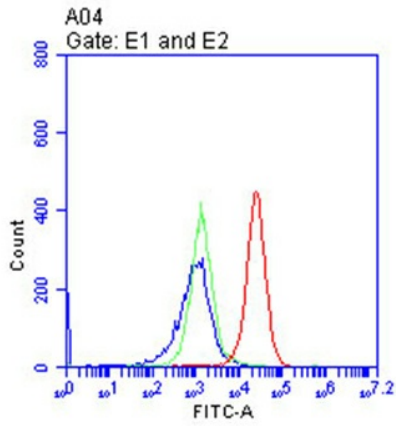
Product images:



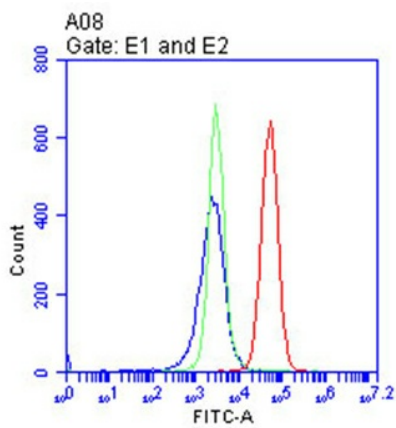
HEK293T cells were transfected with the pCMV6-ENTRY control (Cat# [PS100001], Left lane) or pCMV6-ENTRY CD28 (Cat# [RC211318], Right lane) cDNA for 48 hrs and lysed. Equivalent amounts of cell lysates (5 ug per lane) were separated by SDS-PAGE and immunoblotted with anti-CD28 antibody (Cat# TA813687)(1:500)



Flow cytometric analysis of living 293T cells transfected with CD28 overexpression plasmid ([RC211318]), Red)/empty vector ([PS100001], Blue) using anti-CD28 antibody (TA813687). Cells incubated with a non-specific antibody (Green) were used as isotype control.(1:100)



Flow cytometric analysis of living Jurkat cells, using anti-CD28 antibody(TA813687, Red), compared to an isotype control (green), and a PBS control (blue).(1:100)



Flow cytometric analysis of living RPMI-8226 cells, using anti-CD28 antibody(TA813687, Red), compared to an isotype control (green), and a PBS control (blue).(1:100)