

Product datasheet for **TA813658**

Peroxiredoxin 6 (PRDX6) Mouse Monoclonal Antibody [Clone ID: OTI11B8]

Product data:

Product Type:	Primary Antibodies
Clone Name:	OTI11B8
Applications:	WB
Recommended Dilution:	WB 1:500-1000
Reactivity:	Human, Mouse, Rat
Host:	Mouse
Isotype:	IgG1
Clonality:	Monoclonal
Immunogen:	Full length human recombinant protein of human Prdx6 (NP_004896) produced in E.coli.
Formulation:	PBS (pH 7.3) containing 1% BSA, 50% glycerol and 0.02% sodium azide.
Concentration:	1 mg/ml
Purification:	Purified from mouse ascites fluids or tissue culture supernatant by affinity chromatography (protein A/G)
Conjugation:	Unconjugated
Storage:	Shipped at -20°C or with ice packs, Upon delivery store at -20°C. Dilute in PBS(pH7.3) if necessary. Stable for 12 months from date of receipt. Avoid repeated freeze-thaws.
Stability:	Stable for 12 months from date of receipt.
Predicted Protein Size:	25 kDa
Gene Name:	peroxiredoxin 6
Database Link:	NP_004896 Entrez Gene 11758 Mouse Entrez Gene 94167 Rat Entrez Gene 9588 Human P30041
Background:	The protein encoded by this gene is a member of the thiol-specific antioxidant protein family. This protein is a bifunctional enzyme with two distinct active sites. It is involved in redox regulation of the cell; it can reduce H ₂ O ₂ and short chain organic, fatty acid, and phospholipid hydroperoxides. It may play a role in the regulation of phospholipid turnover as well as in protection against oxidative injury. [provided by RefSeq, Jul 2008].



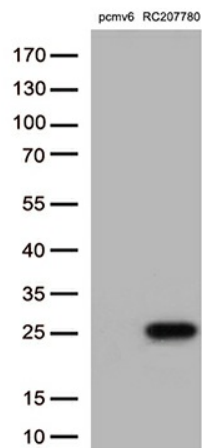
[View online »](#)

Synonyms: 1-Cys; aiPLA2; AOP2; HEL-S-128m; LPCAT-5; NSGPx; p29; PRX

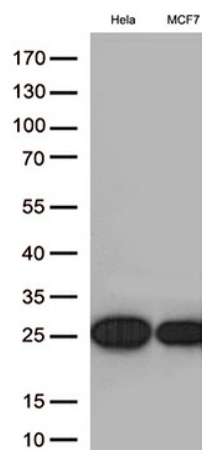
Protein Families: Druggable Genome

Protein Pathways: Metabolic pathways, Methane metabolism, Phenylalanine metabolism

Product images:



HEK293T cells were transfected with the pCMV6-ENTRY control (Cat# [PS100001], Left lane) or pCMV6-ENTRY PRDX6 (Cat# [RC207780], Right lane) cDNA for 48 hrs and lysed. Equivalent amounts of cell lysates (5 ug per lane) were separated by SDS-PAGE and immunoblotted with anti-PRDX6 antibody (Cat# TA813658)(1:1000)



Western blot analysis of extracts (35ug) from 2 cell lines lysates by using anti-PRDX6 monoclonal antibody. (1:500)