

## Product datasheet for **TA813635S**

### CD16 (FCGR3A) Mouse Monoclonal Antibody [Clone ID: OTI12H8]

#### Product data:

Product Type:	Primary Antibodies
Clone Name:	OTI12H8
Applications:	FC
Recommended Dilution:	FLOW 1:100
Reactivity:	Human
Host:	Mouse
Isotype:	IgG2b
Clonality:	Monoclonal
Immunogen:	Full length human recombinant protein of human FCGR3A (NP_001121065) produced in HEK293T cell.
Formulation:	PBS (pH 7.3) containing 1% BSA, 50% glycerol and 0.02% sodium azide.
Concentration:	1 mg/ml
Purification:	Purified from mouse ascites fluids or tissue culture supernatant by affinity chromatography (protein A/G)
Conjugation:	Unconjugated
Storage:	Shipped at -20°C or with ice packs, Upon delivery store at -20°C. Dilute in PBS(pH7.3) if necessary. Stable for 12 months from date of receipt. Avoid repeated freeze-thaws.
Stability:	Stable for 12 months from date of receipt.
Predicted Protein Size:	29.09 kDa
Gene Name:	Fc fragment of IgG receptor IIIa
Database Link:	<a href="#">NP_001121065</a> <a href="#">Entrez Gene 2214 Human</a> <a href="#">P08637</a>



[View online >](#)

**Background:**

This gene encodes a receptor for the Fc portion of immunoglobulin G, and it is involved in the removal of antigen-antibody complexes from the circulation, as well as other antibody-dependent responses. This gene (FCGR3A) is highly similar to another nearby gene (FCGR3B) located on chromosome 1. The receptor encoded by this gene is expressed on natural killer (NK) cells as an integral membrane glycoprotein anchored through a transmembrane peptide, whereas FCGR3B is expressed on polymorphonuclear neutrophils (PMN) where the receptor is anchored through a phosphatidylinositol (PI) linkage. Mutations in this gene have been linked to susceptibility to recurrent viral infections, susceptibility to systemic lupus erythematosus, and alloimmune neonatal neutropenia. Alternatively spliced transcript variants encoding different isoforms have been found for this gene. [provided by RefSeq, Jul 2008].

**Synonyms:**

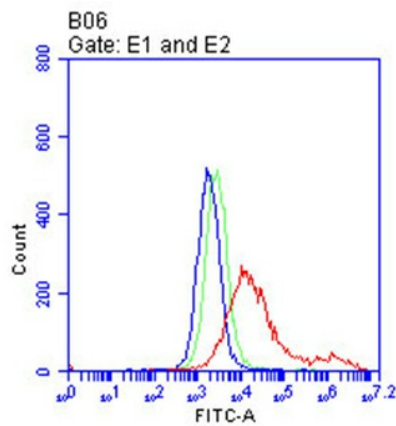
CD16; CD16A; FCG3; FCGR3; FCGR3L; FCR-10; FCRIII; FCRIIIA; IGFR3; IMD20

**Protein Families:**

ES Cell Differentiation/IPS, Secreted Protein, Transmembrane

**Protein Pathways:**

Fc gamma R-mediated phagocytosis, Natural killer cell mediated cytotoxicity, Systemic lupus erythematosus

**Product images:**

Flow cytometric analysis of living 293T cells transfected with FCGR3A overexpression plasmid ([RC225332], Red)/empty vector ([PS100001], Blue) using anti-FCGR3A antibody ([TA813635]). Cells incubated with a non-specific antibody (Green) were used as isotype control. 1:1000