

Product datasheet for **TA813601AM**

NAPSIN A (NAPSA) Mouse Monoclonal Antibody (Biotin conjugated) [Clone ID: OTI3G2]

Product data:

Product Type:	Primary Antibodies
Clone Name:	OTI3G2
Applications:	IHC
Recommended Dilution:	IHC 1:1000
Reactivity:	Human
Host:	Mouse
Isotype:	IgG1
Clonality:	Monoclonal
Immunogen:	Human recombinant protein fragment corresponding to amino acids 64-244 of human NAPSA (NP_004842) produced in E.coli.
Formulation:	PBS (pH 7.3) containing 1% BSA, 50% glycerol and 0.02% sodium azide.
Concentration:	0.5 mg/ml
Purification:	Purified from mouse ascites fluids or tissue culture supernatant by affinity chromatography (protein A/G)
Conjugation:	Biotin
Storage:	Shipped at -20°C or with ice packs, Upon delivery store at -20°C. Dilute in PBS(pH7.3) if necessary. Stable for 12 months from date of receipt. Avoid repeated freeze-thaws.
Stability:	Stable for 12 months from date of receipt.
Predicted Protein Size:	45.4 kDa
Gene Name:	napsin A aspartic peptidase
Database Link:	NP_004842 Entrez Gene 9476 Human O96009



[View online »](#)

Background:

This gene encodes a member of the peptidase A1 family of aspartic proteases. The encoded preproprotein is proteolytically processed to generate an activation peptide and the mature protease. The activation peptides of aspartic proteinases function as inhibitors of the protease active site. These peptide segments, or pro-parts, are deemed important for correct folding, targeting, and control of the activation of aspartic proteinase zymogens. The encoded protease may play a role in the proteolytic processing of pulmonary surfactant protein B in the lung and may function in protein catabolism in the renal proximal tubules. This gene has been described as a marker for lung adenocarcinoma and renal cell carcinoma. [provided by RefSeq, Feb 2016]

Synonyms:

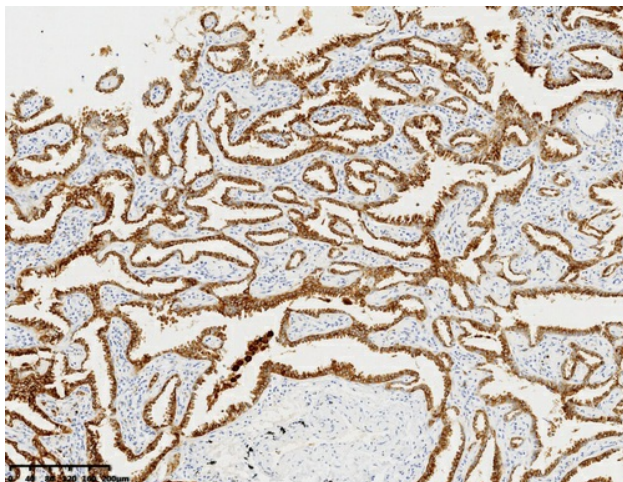
KAP; Kdap; NAP1; NAPA; SNAPA

Protein Families:

Druggable Genome, Protease

Protein Pathways:

Lysosome

Product images:

Immunohistochemical staining of paraffin-embedded Carcinoma of Human lung tissue using anti-NAPSA mouse monoclonal antibody. (Heat-induced epitope retrieval by 1mM EDTA in 10mM Tris buffer (pH8.0) at 120°C for 3 min, [TA813601])