

Product datasheet for **TA813599M**

MelanA (MLANA) Mouse Monoclonal Antibody [Clone ID: OTI1A2]

Product data:

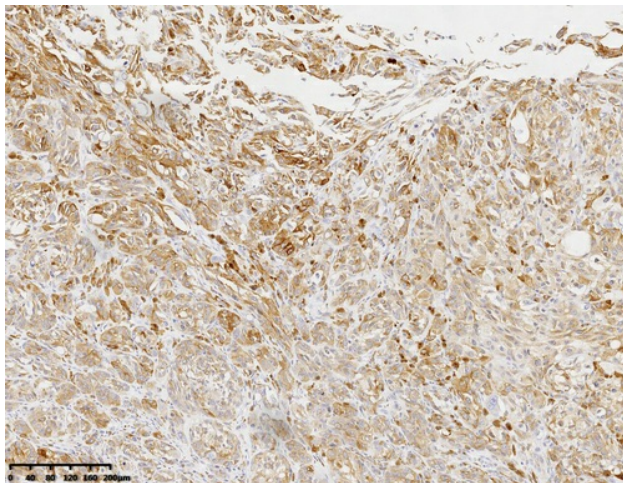
Product Type:	Primary Antibodies
Clone Name:	OTI1A2
Applications:	IHC
Recommended Dilution:	IHC 1:1000
Reactivity:	Human
Host:	Mouse
Isotype:	IgG2b
Clonality:	Monoclonal
Immunogen:	Human recombinant protein fragment corresponding to amino acids 48-118 of human MLANA (NP_005502) produced in E.coli.
Formulation:	PBS (pH 7.3) containing 1% BSA, 50% glycerol and 0.02% sodium azide.
Concentration:	1 mg/ml
Purification:	Purified from mouse ascites fluids or tissue culture supernatant by affinity chromatography (protein A/G)
Conjugation:	Unconjugated
Storage:	Shipped at -20°C or with ice packs, Upon delivery store at -20°C. Dilute in PBS(pH7.3) if necessary. Stable for 12 months from date of receipt. Avoid repeated freeze-thaws.
Stability:	Stable for 12 months from date of receipt.
Predicted Protein Size:	13.2 kDa
Gene Name:	melan-A
Database Link:	NP_005502 Entrez Gene 2315 Human Q16655
Background:	Involved in melanosome biogenesis by ensuring the stability of GPR143. Plays a vital role in the expression, stability, trafficking, and processing of melanocyte protein PMEL, which is critical to the formation of stage II melanosomes. [UniProtKB/Swiss-Prot Function]
Synonyms:	MART-1; MART1



[View online »](#)

Protein Families: Transmembrane

Product images:



Immunohistochemical staining of paraffin-embedded Human melanoma tissue using anti-MLANA mouse monoclonal antibody. Heat-induced epitope retrieval by EDTA solution buffer pH 8.0 at 120°C for 3 min.