

## Product datasheet for **TA813521BM**

### **iNOS (NOS2) Mouse Monoclonal Antibody (HRP conjugated) [Clone ID: OTI3H7]**

#### **Product data:**

<b>Product Type:</b>	Primary Antibodies
<b>Clone Name:</b>	OTI3H7
<b>Applications:</b>	WB
<b>Recommended Dilution:</b>	WB 1:1000
<b>Reactivity:</b>	Human
<b>Host:</b>	Mouse
<b>Isotype:</b>	IgG1
<b>Clonality:</b>	Monoclonal
<b>Immunogen:</b>	Human recombinant protein fragment corresponding to amino acids 539-970 of human Nos2 (NP_000616) produced in E.coli.
<b>Formulation:</b>	PBS (pH 7.3) containing 1% BSA, 50% glycerol.
<b>Concentration:</b>	0.5 mg/ml
<b>Purification:</b>	Purified from mouse ascites fluids or tissue culture supernatant by affinity chromatography (protein A/G)
<b>Conjugation:</b>	HRP
<b>Storage:</b>	Shipped at -20°C or with ice packs, Upon delivery store at -20°C. Dilute in PBS(pH7.3) if necessary. Stable for 12 months from date of receipt. Avoid repeated freeze-thaws.
<b>Stability:</b>	Stable for 12 months from date of receipt.
<b>Predicted Protein Size:</b>	130.9 kDa
<b>Gene Name:</b>	nitric oxide synthase 2
<b>Database Link:</b>	<a href="#">NP_000616</a> <a href="#">Entrez Gene 4843 Human</a> <a href="#">P35228</a>
<b>Background:</b>	Nitric oxide is a reactive free radical which acts as a biologic mediator in several processes, including neurotransmission and antimicrobial and antitumoral activities. This gene encodes a nitric oxide synthase which is expressed in liver and is inducible by a combination of lipopolysaccharide and certain cytokines. Three related pseudogenes are located within the Smith-Magenis syndrome region on chromosome 17. [provided by RefSeq, Jul 2008].



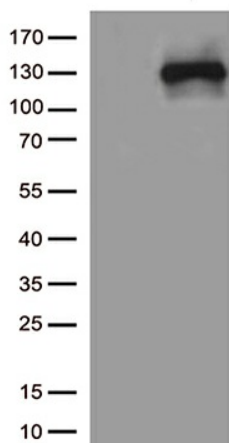
[View online »](#)

**Synonyms:** HEP-NOS; INOS; NOS; NOS2A

**Protein Families:** Druggable Genome

**Protein Pathways:** Alzheimer's disease, Amyotrophic lateral sclerosis (ALS), Arginine and proline metabolism, Calcium signaling pathway, Long-term depression, Metabolic pathways, Pathways in cancer, Small cell lung cancer

### Product images:



HEK293T cells were transfected with the pCMV6-ENTRY control (Cat# [PS100001], Left lane) or pCMV6-ENTRY NOS2 (Cat# [RC211819], Right lane) cDNA for 48 hrs and lysed. Equivalent amounts of cell lysates (5 ug per lane) were separated by SDS-PAGE and immunoblotted with anti-NOS2 antibody (Cat# [TA813521])(1:1000)