

Product datasheet for **TA813503M**

MICB Mouse Monoclonal Antibody [Clone ID: OTI2H8]

Product data:

Product Type:	Primary Antibodies
Clone Name:	OTI2H8
Applications:	FC
Recommended Dilution:	FLOW 1:100
Reactivity:	Human
Host:	Mouse
Isotype:	IgG1
Clonality:	Monoclonal
Immunogen:	Full length human recombinant protein of human MICB (NP_005922) produced in HEK293T cell.
Formulation:	PBS (pH 7.3) containing 1% BSA, 50% glycerol and 0.02% sodium azide.
Concentration:	1 mg/ml
Purification:	Purified from mouse ascites fluids or tissue culture supernatant by affinity chromatography (protein A/G)
Conjugation:	Unconjugated
Storage:	Shipped at -20°C or with ice packs, Upon delivery store at -20°C. Dilute in PBS(pH7.3) if necessary. Stable for 12 months from date of receipt. Avoid repeated freeze-thaws.
Stability:	Stable for 12 months from date of receipt.
Predicted Protein Size:	42.4 kDa
Gene Name:	MHC class I polypeptide-related sequence B
Database Link:	NP_005922 Entrez Gene 4277 Human Q29980


[View online »](#)

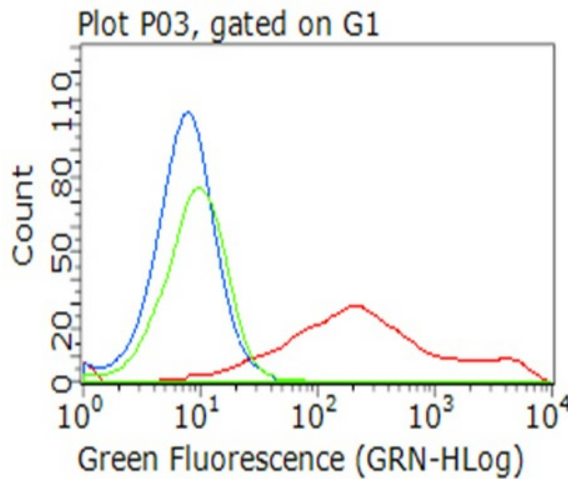
Background: This gene encodes a heavily glycosylated protein which is a ligand for the NKG2D type II receptor. Binding of the ligand activates the cytolytic response of natural killer (NK) cells, CD8 alphabeta T cells, and gammadelta T cells which express the receptor. This protein is stress-induced and is similar to MHC class I molecules; however, it does not associate with beta-2-microglobulin or bind peptides. Alternative splicing results in multiple transcript variants. [provided by RefSeq, Jan 2014]

Synonyms: PERB11.2

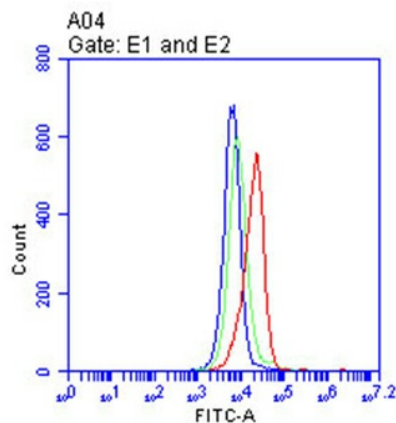
Protein Families: Druggable Genome

Protein Pathways: Natural killer cell mediated cytotoxicity

Product images:



Flow cytometric analysis of living 293T cells transfected with MICB overexpression plasmid ([RC222315]), Red)/empty vector ([PS100001], Blue) using anti-MICB antibody ([TA813503]). Cells incubated with a non-specific antibody (Green) were used as isotype control.(1:100)



Flow cytometric analysis of living K562 cells, using anti-MICB antibody([TA813503], Red), compared to an isotype control (green), and a PBS control (blue).(1:100)