

## Product datasheet for **TA813473AM**

### **IL2 Receptor alpha (IL2RA) Mouse Monoclonal Antibody (Biotin conjugated) [Clone ID: OTI2A5]**

#### **Product data:**

Product Type:	Primary Antibodies
Clone Name:	OTI2A5
Applications:	FC
Recommended Dilution:	Flow 1:100
Reactivity:	Human
Host:	Mouse
Isotype:	IgG2a
Clonality:	Monoclonal
Immunogen:	Full length human recombinant protein of human IL2RA (NP_000408) produced in HEK293T cell.
Formulation:	PBS (pH 7.3) containing 1% BSA, 50% glycerol and 0.02% sodium azide.
Concentration:	0.5 mg/ml
Purification:	Purified from mouse ascites fluids or tissue culture supernatant by affinity chromatography (protein A/G)
Conjugation:	Biotin
Storage:	Shipped at -20°C or with ice packs, Upon delivery store at -20°C. Dilute in PBS(pH7.3) if necessary. Stable for 12 months from date of receipt. Avoid repeated freeze-thaws.
Stability:	Stable for 12 months from date of receipt.
Predicted Protein Size:	30.82 kDa
Gene Name:	interleukin 2 receptor subunit alpha
Database Link:	<a href="#">NP_000408</a> <a href="#">Entrez Gene 3559 Human</a> <a href="#">P01589</a>



[View online »](#)

**Background:**

The interleukin 2 (IL2) receptor alpha (IL2RA) and beta (IL2RB) chains, together with the common gamma chain (IL2RG), constitute the high-affinity IL2 receptor. Homodimeric alpha chains (IL2RA) result in low-affinity receptor, while homodimeric beta (IL2RB) chains produce a medium-affinity receptor. Normally an integral-membrane protein, soluble IL2RA has been isolated and determined to result from extracellular proteolysis. Alternately-spliced IL2RA mRNAs have been isolated, but the significance of each is presently unknown. Mutations in this gene are associated with interleukin 2 receptor alpha deficiency.[provided by RefSeq, Nov 2009]

**Synonyms:**

CD25; IDDM10; IL2R; IMD41; p55; TCGFR

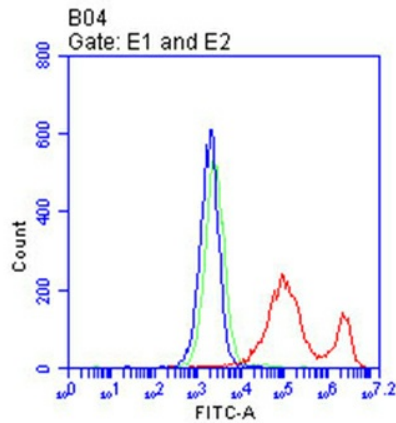
**Protein Families:**

Druggable Genome, ES Cell Differentiation/IPS, Transmembrane

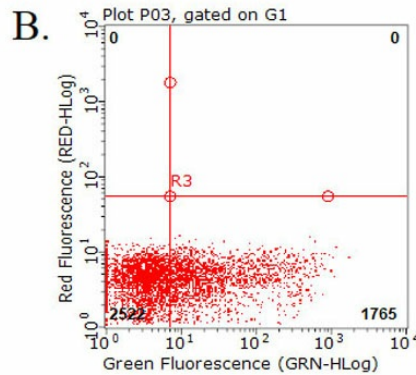
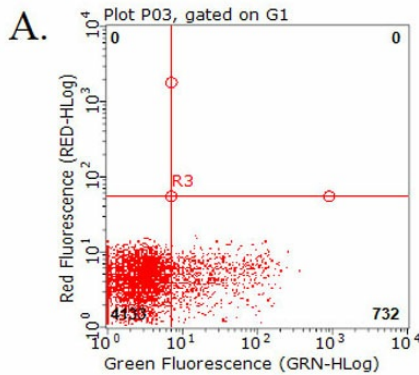
**Protein Pathways:**

Cytokine-cytokine receptor interaction, Endocytosis, Hematopoietic cell lineage, Jak-STAT signaling pathway

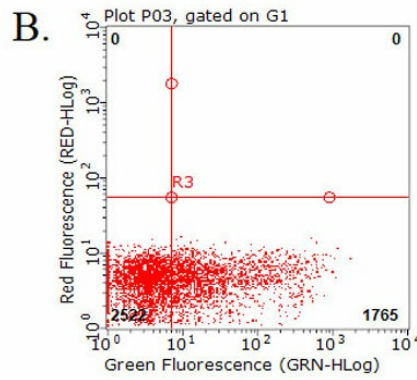
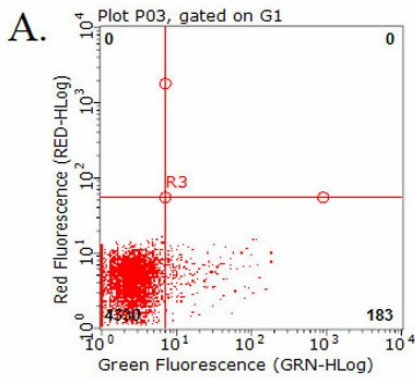
**Product images:**



Flow cytometric analysis of living 293T cells transfected with IL2RA overexpression plasmid ([RC215768], Red)/empty vector ([PS100001], Blue) using anti-IL2RA antibody ([TA813473]). Cells incubated with a non-specific antibody (Green) were used as isotype control. □1□100□



Flow cytometric analysis of living PBMCs treated with 10ug/ml PHA for 72h (Right)/untreated (Left) using anti-IL2RA antibody ([TA813473]).(1:100).



Flow cytometric analysis of living PBMCs treated with 10ug/ml PHA for 72h using anti-IL2RA antibody ([TA813473])(Right). Cells incubated with a non-specific antibody (Left) were used as isotype control.(1:100).