

Product datasheet for **TA813472S**

IL2 Receptor alpha (IL2RA) Mouse Monoclonal Antibody [Clone ID: OTI1A6]

Product data:

Product Type:	Primary Antibodies
Clone Name:	OTI1A6
Applications:	FC
Recommended Dilution:	FLOW 1:100
Reactivity:	Human
Host:	Mouse
Isotype:	IgG2a
Clonality:	Monoclonal
Immunogen:	Full length human recombinant protein of human IL2RA (NP_000408) produced in HEK293T cell.
Formulation:	PBS (pH 7.3) containing 1% BSA, 50% glycerol and 0.02% sodium azide.
Concentration:	1 mg/ml
Purification:	Purified from mouse ascites fluids or tissue culture supernatant by affinity chromatography (protein A/G)
Conjugation:	Unconjugated
Storage:	Shipped at -20°C or with ice packs, Upon delivery store at -20°C. Dilute in PBS(pH7.3) if necessary. Stable for 12 months from date of receipt. Avoid repeated freeze-thaws.
Stability:	Stable for 12 months from date of receipt.
Predicted Protein Size:	30.82 kDa
Gene Name:	interleukin 2 receptor subunit alpha
Database Link:	NP_000408 Entrez Gene 3559 Human P01589



[View online »](#)

Background:

The interleukin 2 (IL2) receptor alpha (IL2RA) and beta (IL2RB) chains, together with the common gamma chain (IL2RG), constitute the high-affinity IL2 receptor. Homodimeric alpha chains (IL2RA) result in low-affinity receptor, while homodimeric beta (IL2RB) chains produce a medium-affinity receptor. Normally an integral-membrane protein, soluble IL2RA has been isolated and determined to result from extracellular proteolysis. Alternately-spliced IL2RA mRNAs have been isolated, but the significance of each is presently unknown. Mutations in this gene are associated with interleukin 2 receptor alpha deficiency.[provided by RefSeq, Nov 2009]

Synonyms:

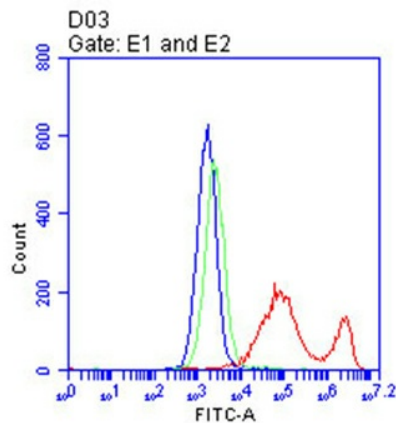
CD25; IDDM10; IL2R; IMD41; p55; TCGFR

Protein Families:

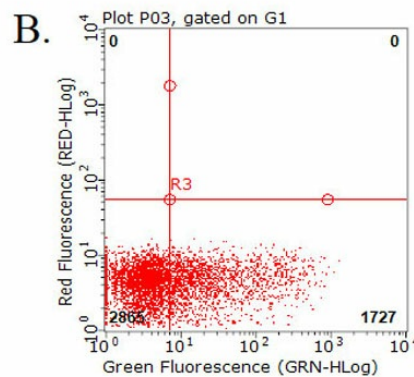
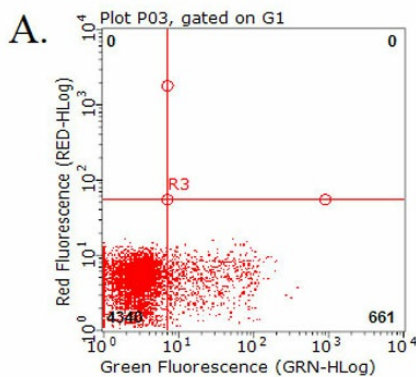
Druggable Genome, ES Cell Differentiation/IPS, Transmembrane

Protein Pathways:

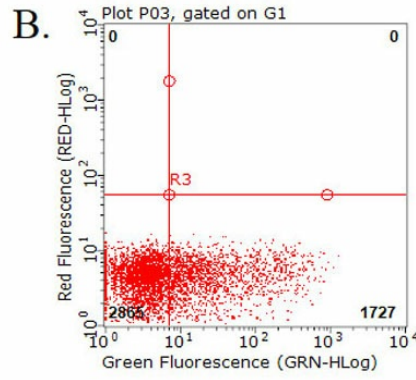
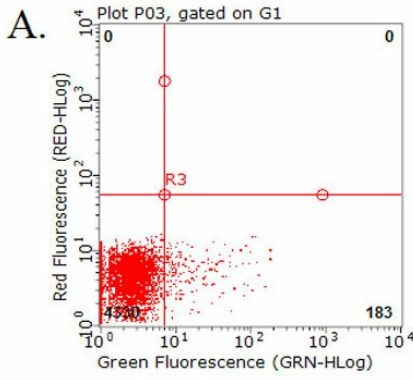
Cytokine-cytokine receptor interaction, Endocytosis, Hematopoietic cell lineage, Jak-STAT signaling pathway

Product images:


Flow cytometric analysis of living 293T cells transfected with IL2RA overexpression plasmid ([RC215768]), Red/empty vector ([PS100001], Blue) using anti-IL2RA antibody ([TA813472]). Cells incubated with a non-specific antibody (Green) were used as isotype control. □1:100□



Flow cytometric analysis of living PBMCs treated with 10ug/ml PHA for 72h (Right)/untreated (Left) using anti-IL2RA antibody ([TA813472]).(1:100)



Flow cytometric analysis of living PBMCs treated with 10ug/ml PHA for 72h using anti-IL2RA antibody ([TA813472])(Right). Cells incubated with a non-specific antibody (Left) were used as isotype control.(1:100)