

Product datasheet for **TA813398M**

PKC alpha (PRKCA) Mouse Monoclonal Antibody [Clone ID: OTI5F4]

Product data:

Product Type:	Primary Antibodies
Clone Name:	OTI5F4
Applications:	WB
Recommended Dilution:	WB 1:500-1000
Reactivity:	Human, Mouse, Rat
Host:	Mouse
Isotype:	IgG2b
Clonality:	Monoclonal
Immunogen:	Human recombinant protein fragment corresponding to amino acids 350-672 of human PRKCA (NP_002728) produced in E.coli.
Formulation:	PBS (pH 7.3) containing 1% BSA, 50% glycerol and 0.02% sodium azide.
Concentration:	1 mg/ml
Purification:	Purified from mouse ascites fluids or tissue culture supernatant by affinity chromatography (protein A/G)
Conjugation:	Unconjugated
Storage:	Shipped at -20°C or with ice packs, Upon delivery store at -20°C. Dilute in PBS(pH7.3) if necessary. Stable for 12 months from date of receipt. Avoid repeated freeze-thaws.
Stability:	Stable for 12 months from date of receipt.
Predicted Protein Size:	76.6 kDa
Gene Name:	protein kinase C alpha
Database Link:	NP_002728 Entrez Gene 18750 Mouse Entrez Gene 24680 Rat Entrez Gene 5578 Human P17252


[View online »](#)

Background:

Protein kinase C (PKC) is a family of serine- and threonine-specific protein kinases that can be activated by calcium and the second messenger diacylglycerol. PKC family members phosphorylate a wide variety of protein targets and are known to be involved in diverse cellular signaling pathways. PKC family members also serve as major receptors for phorbol esters, a class of tumor promoters. Each member of the PKC family has a specific expression profile and is believed to play a distinct role in cells. The protein encoded by this gene is one of the PKC family members. This kinase has been reported to play roles in many different cellular processes, such as cell adhesion, cell transformation, cell cycle checkpoint, and cell volume control. Knockout studies in mice suggest that this kinase may be a fundamental regulator of cardiac contractility and Ca(2+) handling in myocytes. [provided by RefSeq, Jul 2008].

Synonyms:

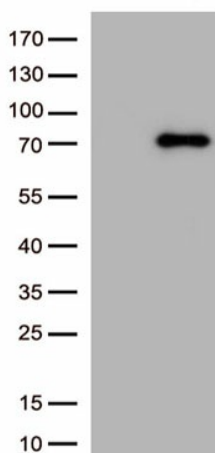
AAG6; PKC-alpha; PKCA; PKCalpha; PKCI+/-; PRKACA

Protein Families:

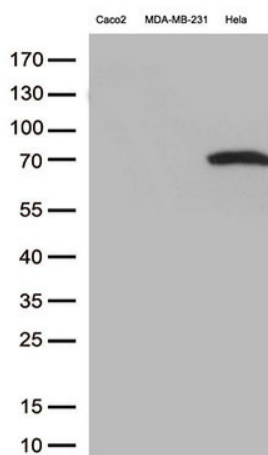
Druggable Genome, ES Cell Differentiation/IPS, Protein Kinase

Protein Pathways:

Calcium signaling pathway, ErbB signaling pathway, Fc epsilon RI signaling pathway, Fc gamma R-mediated phagocytosis, Focal adhesion, Gap junction, Glioma, GnRH signaling pathway, Leukocyte transendothelial migration, Long-term depression, Long-term potentiation, MAPK signaling pathway, Melanogenesis, Natural killer cell mediated cytotoxicity, Non-small cell lung cancer, Pathogenic Escherichia coli infection, Pathways in cancer, Phosphatidylinositol signaling system, Tight junction, Vascular smooth muscle contraction, VEGF signaling pathway, Vibrio cholerae infection, Wnt signaling pathway

Product images:


HEK293T cells were transfected with the pCMV6-ENTRY control (Cat# [PS100001], Left lane) or pCMV6-ENTRY PRKCA (Cat# [RC211893], Right lane) cDNA for 48 hrs and lysed. Equivalent amounts of cell lysates (5 ug per lane) were separated by SDS-PAGE and immunoblotted with anti-PRKCA antibody (Cat# [TA813398])(1:1000)



Western blot analysis of extracts (35ug) from 3 cell lines lysates by using anti-PRKCA monoclonal antibody. (1:500)