

Product datasheet for **TA813372BM**

EEA1 Mouse Monoclonal Antibody (HRP conjugated) [Clone ID: OTI2F6]

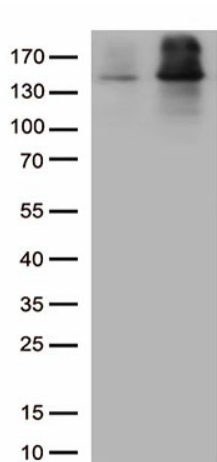
Product data:

Product Type:	Primary Antibodies
Clone Name:	OTI2F6
Applications:	WB
Recommended Dilution:	WB 1:500-1000
Reactivity:	Human, Mouse, Rat
Host:	Mouse
Isotype:	IgG1
Clonality:	Monoclonal
Immunogen:	Human recombinant protein fragment corresponding to amino acids 1-400 of human EEA1 (NP_003557) produced in E.coli.
Formulation:	PBS (pH 7.3) containing 1% BSA, 50% glycerol.
Concentration:	0.5 mg/ml
Purification:	Purified from mouse ascites fluids or tissue culture supernatant by affinity chromatography (protein A/G)
Conjugation:	HRP
Storage:	Shipped at -20°C or with ice packs, Upon delivery store at -20°C. Dilute in PBS(pH7.3) if necessary. Stable for 12 months from date of receipt. Avoid repeated freeze-thaws.
Stability:	Stable for 12 months from date of receipt.
Predicted Protein Size:	162.3 kDa
Gene Name:	early endosome antigen 1
Database Link:	NP_003557 Entrez Gene 216238 Mouse Entrez Gene 314764 Rat Entrez Gene 8411 Human Q15075
Background:	Binds phospholipid vesicles containing phosphatidylinositol 3-phosphate and participates in endosomal trafficking. [UniProtKB/Swiss-Prot Function]
Synonyms:	MST105; MSTP105; ZFYVE2
Protein Pathways:	Endocytosis

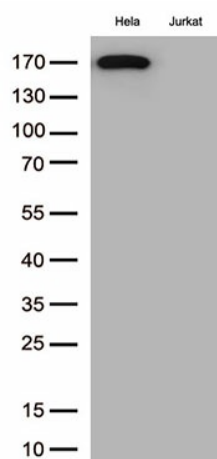


[View online »](#)

Product images:



HEK293T cells were transfected with the pCMV6-ENTRY control (Left lane) or pCMV6-ENTRY EEA1 (RC215396), Right lane) cDNA for 48 hrs and lysed. Equivalent amounts of cell lysates (5 ug per lane) were separated by SDS-PAGE and immunoblotted with anti-EEA1.(1:1000)



Western blot analysis of extracts (35ug) from 2 cell lines lysates by using anti-EEA1 monoclonal antibody. (1:500)