

Product datasheet for **TA813317AM**

KAP1 (TRIM28) Mouse Monoclonal Antibody (Biotin conjugated) [Clone ID: OTI8B12]

Product data:

Product Type:	Primary Antibodies
Clone Name:	OTI8B12
Applications:	IF, IHC, WB
Recommended Dilution:	WB 1:500, IHC 1:500, IF 1:100
Reactivity:	Human, Mouse, Rat
Host:	Mouse
Isotype:	IgG1
Clonality:	Monoclonal
Immunogen:	Full length human recombinant protein of human TRIM28 (NP_005753) produced in HEK293T cell.
Formulation:	PBS (pH 7.3) containing 1% BSA, 50% glycerol and 0.02% sodium azide.
Concentration:	0.5 mg/ml
Purification:	Purified from mouse ascites fluids or tissue culture supernatant by affinity chromatography (protein A/G)
Conjugation:	Biotin
Storage:	Store at -20°C as received.
Stability:	Stable for 12 months from date of receipt.
Predicted Protein Size:	88.4 kDa
Gene Name:	tripartite motif containing 28
Database Link:	NP_005753 Entrez Gene 21849 Mouse Entrez Gene 116698 Rat Entrez Gene 10155 Human Q13263
Background:	The protein encoded by this gene mediates transcriptional control by interaction with the Kruppel-associated box repression domain found in many transcription factors. The protein localizes to the nucleus and is thought to associate with specific chromatin regions. The protein is a member of the tripartite motif family. This tripartite motif includes three zinc-binding domains, a RING, a B-box type 1 and a B-box type 2, and a coiled-coil region. [provided by RefSeq, Jul 2008]

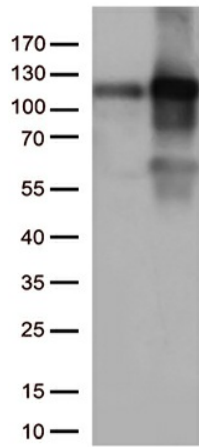


[View online »](#)

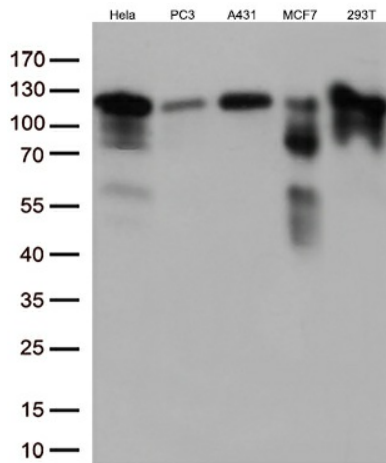
Synonyms: KAP1; PPP1R157; RNF96; TF1B; TIF1B

Protein Families: Protein Kinase, Stem cell - Pluripotency, Transcription Factors

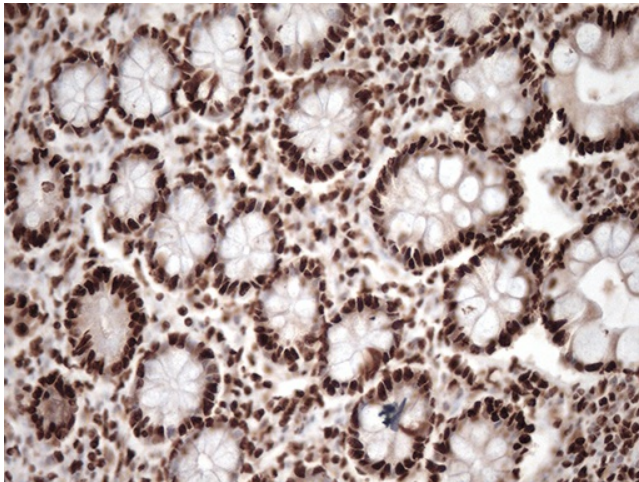
Product images:



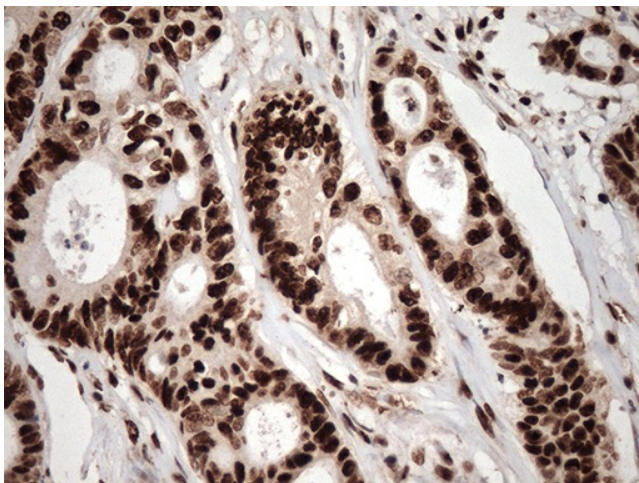
HEK293T cells were transfected with the pCMV6-ENTRY control (Left lane) or pCMV6-ENTRY TRIM28 ([RC201205], Right lane) cDNA for 48 hrs and lysed. Equivalent amounts of cell lysates (5 ug per lane) were separated by SDS-PAGE and immunoblotted with anti-TRIM28 (1:500).



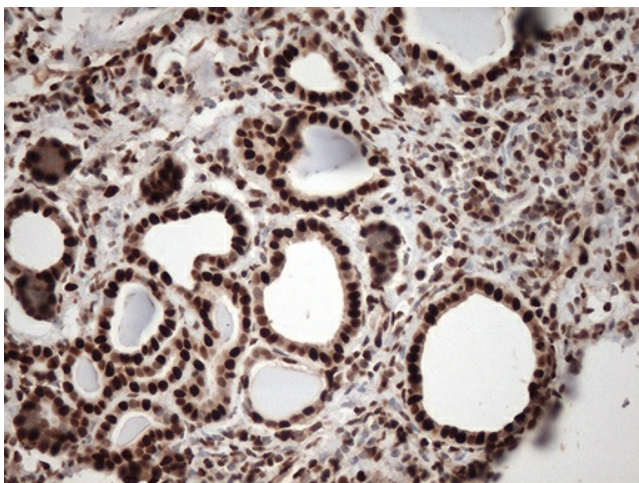
Western blot analysis of extracts (35ug) from 5 different cell lines by using anti-TRIM28 monoclonal antibody (1:500).



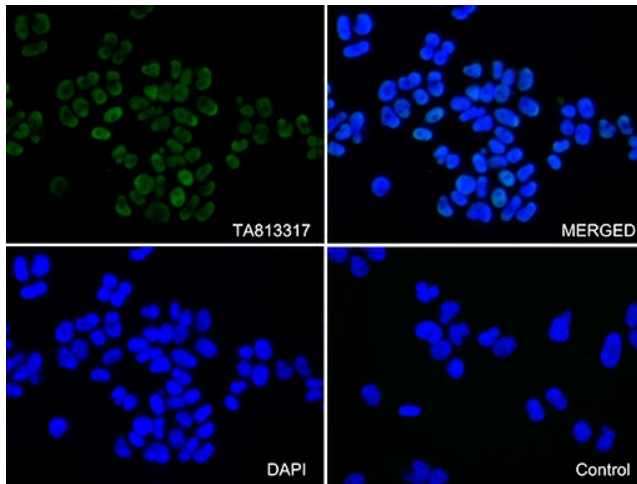
Immunohistochemical staining of paraffin-embedded Human colon tissue within the normal limits using anti-TRIM28 mouse monoclonal antibody. (Heat-induced epitope retrieval by 1mM EDTA in 10mM Tris buffer (pH8.5) at 120°C for 3min, [TA813317]) (1:500)



Immunohistochemical staining of paraffin-embedded Adenocarcinoma of Human colon tissue using anti-TRIM28 mouse monoclonal antibody. (Heat-induced epitope retrieval by 1mM EDTA in 10mM Tris buffer (pH8.5) at 120°C for 3min, [TA813317]) (1:500)



Immunohistochemical staining of paraffin-embedded Human Kidney tissue within the normal limits using anti-TRIM28 mouse monoclonal antibody. (Heat-induced epitope retrieval by 1mM EDTA in 10mM Tris buffer (pH8.5) at 120°C for 3min, [TA813317]) (1:500)



Immunofluorescent staining of HEK293T cells using anti-TRIM28 antibody ([TA813317]/green, upper left; DAPI/blue, lower left; MERGED, upper right) or Isotype control (MERGED, lower right) (1:100).