

## Product datasheet for **TA813305AM**

### IL10 Mouse Monoclonal Antibody (Biotin conjugated) [Clone ID: OTI9H3]

#### Product data:

Product Type:	Primary Antibodies
Clone Name:	OTI9H3
Applications:	WB
Recommended Dilution:	WB 1:500
Reactivity:	Human
Host:	Mouse
Isotype:	IgG1
Clonality:	Monoclonal
Immunogen:	Human recombinant protein fragment corresponding to amino acids 19-178 of human IL10 (NP_000563) produced in E.coli.
Formulation:	PBS (pH 7.3) containing 1% BSA, 50% glycerol and 0.02% sodium azide.
Concentration:	0.5 mg/ml
Purification:	Purified from mouse ascites fluids or tissue culture supernatant by affinity chromatography (protein A/G)
Conjugation:	Biotin
Storage:	Store at -20°C as received.
Stability:	Stable for 12 months from date of receipt.
Predicted Protein Size:	20.52 kDa
Gene Name:	interleukin 10
Database Link:	<a href="#">NP_000563</a> <a href="#">Entrez Gene 3586 Human</a> <a href="#">P22301</a>



[View online »](#)

**Background:**

The protein encoded by this gene is a cytokine produced primarily by monocytes and to a lesser extent by lymphocytes. This cytokine has pleiotropic effects in immunoregulation and inflammation. It down-regulates the expression of Th1 cytokines, MHC class II Ags, and costimulatory molecules on macrophages. It also enhances B cell survival, proliferation, and antibody production. This cytokine can block NF-kappa B activity, and is involved in the regulation of the JAK-STAT signaling pathway. Knockout studies in mice suggested the function of this cytokine as an essential immunoregulator in the intestinal tract. Mutations in this gene are associated with an increased susceptibility to HIV-1 infection and rheumatoid arthritis. [provided by RefSeq, May 2011]

**Synonyms:**

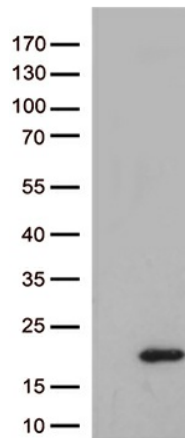
CSIF; GVHDS; IL-10; IL10A; TGIF

**Protein Families:**

Druggable Genome, ES Cell Differentiation/IPS, Secreted Protein

**Protein Pathways:**

Allograft rejection, Asthma, Autoimmune thyroid disease, Cytokine-cytokine receptor interaction, Jak-STAT signaling pathway, Systemic lupus erythematosus, T cell receptor signaling pathway

**Product images:**

HEK293T cells were transfected with the pCMV6-ENTRY control (Cat# [PS100001], Left lane) or pCMV6-ENTRY IL10 (Cat# [RC216785], Right lane) cDNA for 48 hrs and lysed. Equivalent amounts of cell lysates (5 ug per lane) were separated by SDS-PAGE and immunoblotted with anti-IL10 (Cat# [TA813305])(1:500).