

## Product datasheet for **TA813304S**

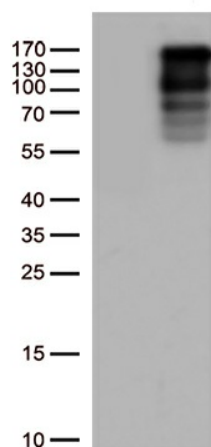
### LARP1 Mouse Monoclonal Antibody [Clone ID: OTI4E2]

#### Product data:

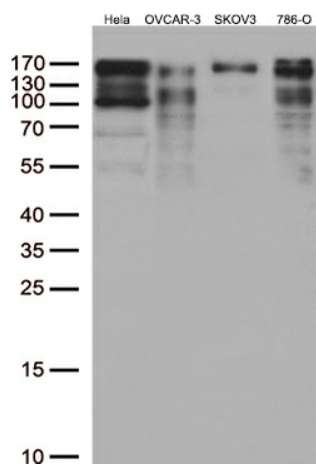
Product Type:	Primary Antibodies
Clone Name:	OTI4E2
Applications:	WB
Recommended Dilution:	WB 1:500
Reactivity:	Human, Mouse, Rat
Host:	Mouse
Isotype:	IgG1
Clonality:	Monoclonal
Immunogen:	Human recombinant protein fragment corresponding to amino acids 315-615 of human LARP1 (NP_291029) produced in E.coli.
Formulation:	PBS (PH 7.3) containing 1% BSA, 50% glycerol and 0.02% sodium azide.
Concentration:	1 mg/ml
Purification:	Purified from mouse ascites fluids or tissue culture supernatant by affinity chromatography (protein A/G)
Conjugation:	Unconjugated
Storage:	Store at -20°C as received.
Stability:	Stable for 12 months from date of receipt.
Predicted Protein Size:	123.3 kDa
Gene Name:	La ribonucleoprotein domain family member 1
Database Link:	<a href="#">NP_291029</a> <a href="#">Entrez Gene 73158 Mouse</a> <a href="#">Entrez Gene 303158 Rat</a> <a href="#">Entrez Gene 23367 Human</a> <a href="#">Q6PKG0</a>
Synonyms:	Lar1; LARP; Lhp1



[View online »](#)

**Product images:**

HEK293T cells were transfected with the pCMV6-ENTRY control (Cat# [PS100001], Left lane) or pCMV6-ENTRY LARP1 (Cat# [RC216752], Right lane) cDNA for 48 hrs and lysed. Equivalent amounts of cell lysates (5 ug per lane) were separated by SDS-PAGE and immunoblotted with anti-LARP1 (Cat# [TA813304])(1:500).



Western blot analysis of extracts (35ug) from 4 cell lines lysates by using anti-LARP1 monoclonal antibody (1:500).