

## Product datasheet for **TA813302M**

### **B7H3 (CD276) Mouse Monoclonal Antibody [Clone ID: OT11A10]**

#### Product data:

Product Type:	Primary Antibodies
Clone Name:	OT11A10
Applications:	FC, IHC, WB
Recommended Dilution:	WB 1:500-1000 FLOW 1:100 IHC 1:100
Reactivity:	Human, Mouse, Rat
Host:	Mouse
Isotype:	IgG1
Clonality:	Monoclonal
Immunogen:	Full length human recombinant protein of human CD276 (NP_079516) produced in HEK293T cell.
Formulation:	PBS (pH 7.3) containing 1% BSA, 50% glycerol and 0.02% sodium azide.
Concentration:	1 mg/ml
Purification:	Purified from mouse ascites fluids or tissue culture supernatant by affinity chromatography (protein A/G)
Conjugation:	Unconjugated
Storage:	Shipped at -20°C or with ice packs, Upon delivery store at -20°C. Dilute in PBS(pH7.3) if necessary. Stable for 12 months from date of receipt. Avoid repeated freeze-thaws.
Stability:	Stable for 12 months from date of receipt.
Predicted Protein Size:	33.6 kDa
Gene Name:	CD276 molecule
Database Link:	<a href="#">NP_079516</a> <a href="#">Entrez Gene 102657 Mouse</a> <a href="#">Entrez Gene 315716 Rat</a> <a href="#">Entrez Gene 80381 Human</a> <a href="#">Q5ZPR3</a>



[View online »](#)

**Background:**

The protein encoded by this gene belongs to the immunoglobulin superfamily, and thought to participate in the regulation of T-cell-mediated immune response. Studies show that while the transcript of this gene is ubiquitously expressed in normal tissues and solid tumors, the protein is preferentially expressed only in tumor tissues. Additionally, it was observed that the 3' UTR of this transcript contains a target site for miR29 microRNA, and there is an inverse correlation between the expression of this protein and miR29 levels, suggesting regulation of expression of this gene product by miR29. Alternatively spliced transcript variants encoding different isoforms have been found for this gene. [provided by RefSeq, Sep 2011].

**Synonyms:**

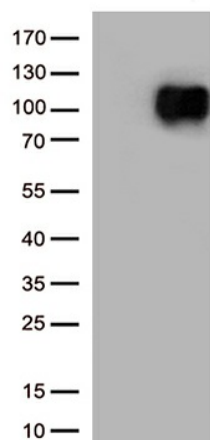
4Ig-B7-H3; B7-H3; B7H3; B7RP-2

**Protein Families:**

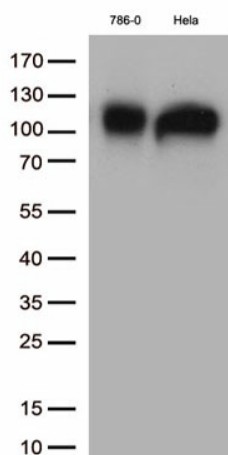
Druggable Genome, Transmembrane

**Protein Pathways:**

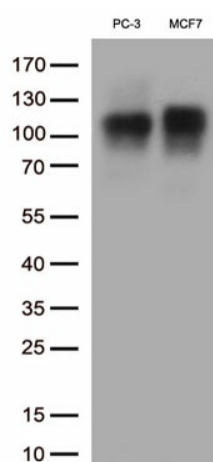
Cell adhesion molecules (CAMs)

**Product images:**


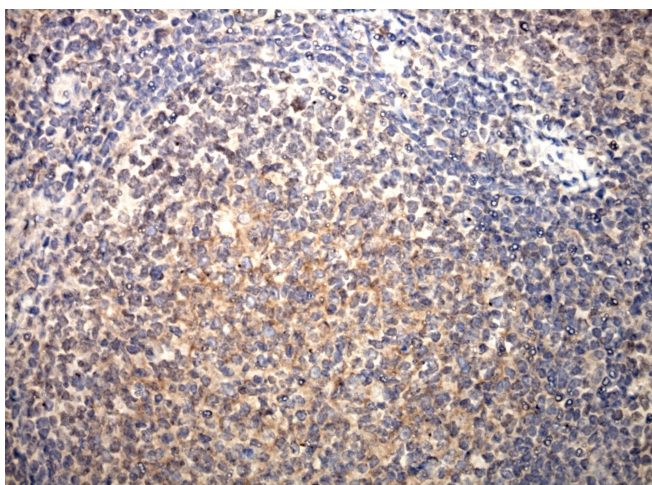
HEK293T cells were transfected with the pCMV6-ENTRY control (Cat# [PS100001], Left lane) or pCMV6-ENTRY CD276 (Cat# [RC215291], Right lane) cDNA for 48 hrs and lysed. Equivalent amounts of cell lysates (5 ug per lane) were separated by SDS-PAGE and immunoblotted with anti-CD276 antibody (Cat# [TA813302])(1:1000)



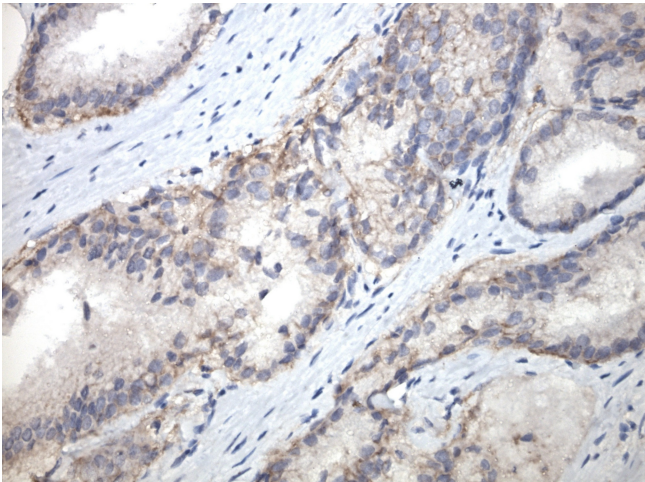
Western blot analysis of extracts (35ug) from 2 cell lines lysates by using anti-CD276 monoclonal antibody. (1:500)



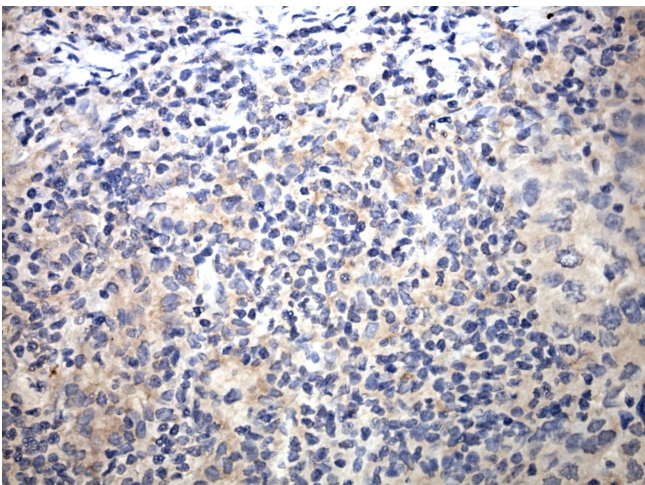
Western blot analysis of extracts (35ug) from 2 cell lines lysates by using anti-CD276 monoclonal antibody. (1:500)



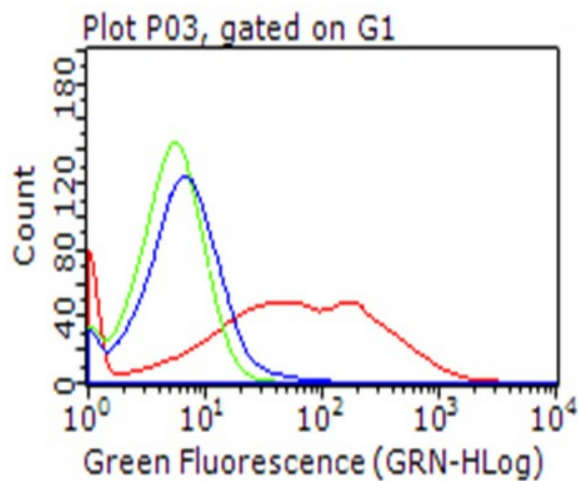
Immunohistochemical staining of paraffin-embedded normal tonsil using CD276 antibody [TA813302] clone OTI1A10 mouse monoclonal antibody. Protocol used HIER TEE pH9.0 (cat# [B21-100]) and anti-CD276 at 1:100 dilution. Detection was done with Polink1 Broad Mouse and Rabbit C/N [D11-18] with DAB Kit. Image 40x magnification.



Immunohistochemical staining of paraffin-embedded prostate cancer using CD276 antibody [TA813302] clone OTI1A10 mouse monoclonal antibody. Protocol used HIER TEE pH9.0 (cat# [B21-100]) and anti-CD276 at 1:100 dilution. Detection was done with Polink1 Broad Mouse and Rabbit C/N [D11-18] with DAB Kit. Image 40x magnification.



Immunohistochemical staining of paraffin-embedded lung cancer using CD276 antibody [TA813302] clone OTI1A10 mouse monoclonal antibody. Protocol used HIER TEE pH9.0 (cat# [B21-100]) and anti-CD276 at 1:100 dilution. Detection was done with Polink1 Broad Mouse and Rabbit C/N [D11-18] with DAB Kit. Image 40x magnification.



Flow cytometric analysis of living 293T cells transfected with CD276 overexpression plasmid ([RC215291]), Red)/empty vector ([PS100001], Blue) using anti-CD276 antibody ([TA813302]). Cells incubated with a non-specific antibody (Green) were used as isotype control. □1□100□