

## Product datasheet for **TA813293S**

### **JNK3 (MAPK10) Mouse Monoclonal Antibody [Clone ID: OTI4F9]**

#### **Product data:**

Product Type:	Primary Antibodies
Clone Name:	OTI4F9
Applications:	WB
Recommended Dilution:	WB 1:500
Reactivity:	Human, Mouse, Rat
Host:	Mouse
Isotype:	IgG1
Clonality:	Monoclonal
Immunogen:	Human recombinant protein fragment corresponding to amino acids 39-402 of human JNK1 (NP_002744) produced in E.coli.
Formulation:	PBS (pH 7.3) containing 1% BSA, 50% glycerol and 0.02% sodium azide.
Concentration:	1 mg/ml
Purification:	Purified from mouse ascites fluids or tissue culture supernatant by affinity chromatography (protein A/G)
Conjugation:	Unconjugated
Storage:	Store at -20°C as received.
Stability:	Stable for 12 months from date of receipt.
Predicted Protein Size:	48.4 kDa
Gene Name:	mitogen-activated protein kinase 10
Database Link:	<a href="#">NP_002744</a> <a href="#">Entrez Gene 25272 Rat</a> <a href="#">Entrez Gene 26414 Mouse</a> <a href="#">Entrez Gene 5602 Human</a> <a href="#">P53779</a>



[View online »](#)

**Background:**

The protein encoded by this gene is a member of the MAP kinase family. MAP kinases act as integration points for multiple biochemical signals and are involved in a wide variety of cellular processes, such as proliferation, differentiation, transcription regulation and development. This kinase is specifically expressed in a subset of neurons in the nervous system and is activated by threonine and tyrosine phosphorylation. Targeted deletion of this gene in mice suggests that it may have a role in stress-induced neuronal apoptosis. Alternatively spliced transcript variants encoding different isoforms have been described for this gene. A recent study provided evidence for translational readthrough in this gene and expression of an additional C-terminally extended isoform via the use of an alternative in-frame translation termination codon. [provided by RefSeq, Dec 2015]

**Synonyms:**

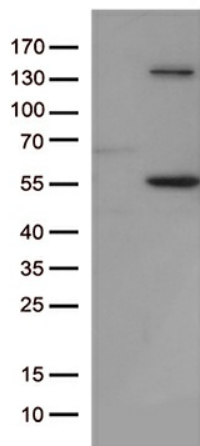
JNK3; JNK3A; p54bSAPK; p493F12; PRKM10; SAPK1b

**Protein Families:**

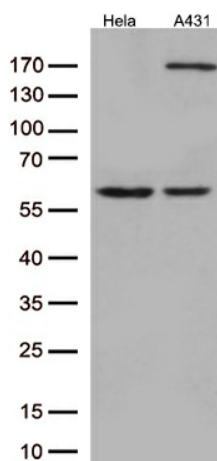
Druggable Genome, Protein Kinase

**Protein Pathways:**

Adipocytokine signaling pathway, Colorectal cancer, Epithelial cell signaling in Helicobacter pylori infection, ErbB signaling pathway, Fc epsilon RI signaling pathway, Focal adhesion, GnRH signaling pathway, Insulin signaling pathway, MAPK signaling pathway, Neurotrophin signaling pathway, NOD-like receptor signaling pathway, Pancreatic cancer, Pathways in cancer, Progesterone-mediated oocyte maturation, RIG-I-like receptor signaling pathway, Toll-like receptor signaling pathway, Type II diabetes mellitus, Wnt signaling pathway

**Product images:**

HEK293T cells were transfected with the pCMV6-ENTRY control (Cat# [PS100001], Left lane) or pCMV6-ENTRY JNK1 (Cat# [RC207216], Right lane) cDNA for 48 hrs and lysed. Equivalent amounts of cell lysates (5 ug per lane) were separated by SDS-PAGE and immunoblotted with anti-JNK1 (Cat# [TA813293])(1:500).



Western blot analysis of extracts (35ug) from 2 cell lines lysates by using anti-JNK1 monoclonal antibody (1:500).