

Product datasheet for **TA813289M**

PKR (EIF2AK2) Mouse Monoclonal Antibody [Clone ID: OTI3F5]

Product data:

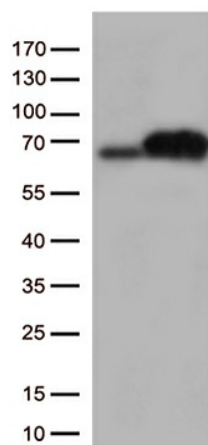
Product Type:	Primary Antibodies
Clone Name:	OTI3F5
Applications:	IHC, WB
Recommended Dilution:	WB 1:500, IHC 1:500
Reactivity:	Human
Host:	Mouse
Isotype:	IgG1
Clonality:	Monoclonal
Immunogen:	Human recombinant protein fragment corresponding to amino acids 51-191 of human EIF2AK2 (NP_001129123) produced in E.coli.
Formulation:	PBS (pH 7.3) containing 1% BSA, 50% glycerol and 0.02% sodium azide.
Concentration:	1 mg/ml
Purification:	Purified from mouse ascites fluids or tissue culture supernatant by affinity chromatography (protein A/G)
Conjugation:	Unconjugated
Storage:	Store at -20°C as received.
Stability:	Stable for 12 months from date of receipt.
Predicted Protein Size:	61.9 kDa
Gene Name:	eukaryotic translation initiation factor 2 alpha kinase 2
Database Link:	NP_001129123 Entrez Gene 5610 Human P19525
Background:	The protein encoded by this gene is a serine/threonine protein kinase that is activated by autophosphorylation after binding to dsRNA. The activated form of the encoded protein can phosphorylate translation initiation factor EIF2S1, which in turn inhibits protein synthesis. This protein is also activated by manganese ions and heparin. Three transcript variants encoding two different isoforms have been found for this gene. [provided by RefSeq, Oct 2011]


[View online »](#)

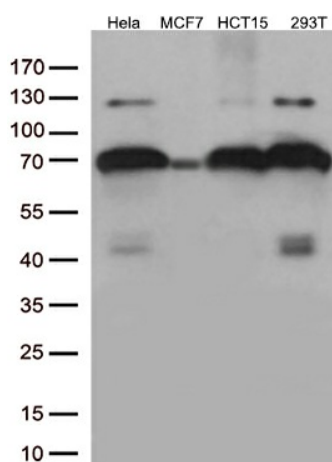
Synonyms: EIF2AK1; LEUDEN; PKR; PPP1R83; PRKR

Protein Families: Druggable Genome, Protein Kinase, Transcription Factors

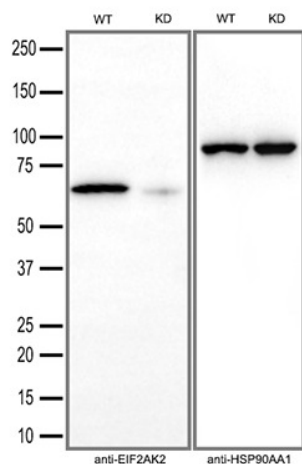
Product images:



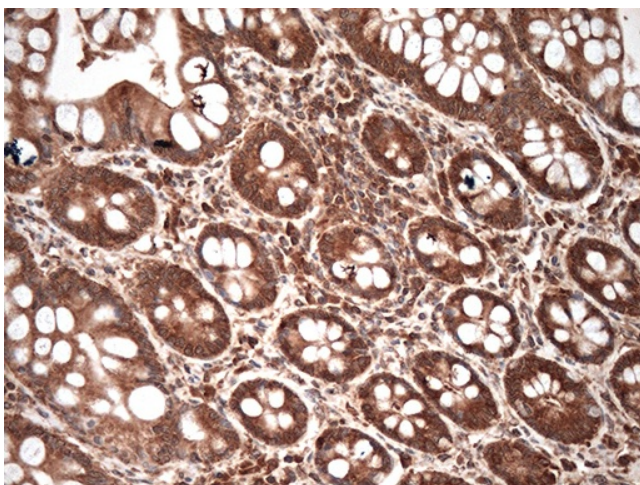
HEK293T cells were transfected with the pCMV6-ENTRY control (Cat# [PS100001], Left lane) or pCMV6-ENTRY EIF2AK2 (Cat# [RC226606], Right lane) cDNA for 48 hrs and lysed. Equivalent amounts of cell lysates (5 ug per lane) were separated by SDS-PAGE and immunoblotted with anti-EIF2AK2 (Cat# [TA813289])(1:500).



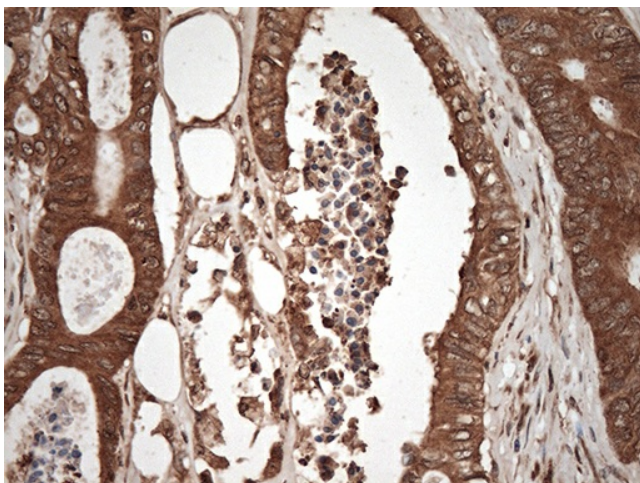
Western blot analysis of extracts (35ug) from 4 cell lines lysates by using anti-EIF2AK2 monoclonal antibody (1:500).



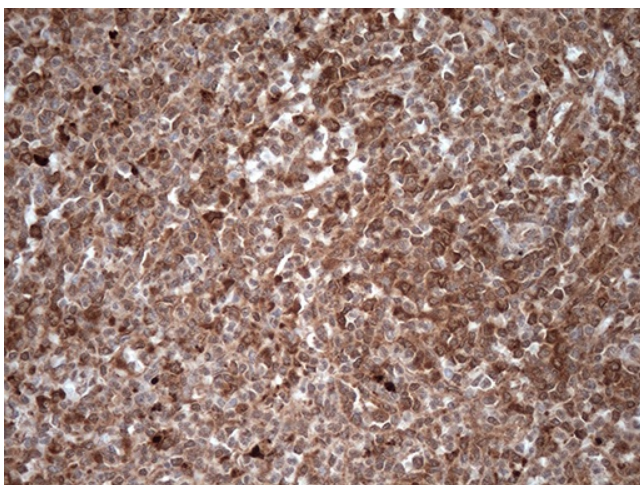
Equivalent amounts of cell lysates (30 ug per lane) of wild-type HeLa cells(WT) and EIF2AK2-Knockdown HeLa cells(KD) were separated by SDS-PAGE and immunoblotted with anti-EIF2AK2 monoclonal antibody [TA813289](1:5000). Then the blotted membrane was stripped and reprobed with anti-HSP90AA1 antibody as a loading control.



Immunohistochemical staining of paraffin-embedded Human colon tissue within the normal limits using anti-EIF2AK2 mouse monoclonal antibody. Heat-induced epitope retrieval by EDTA solution buffer pH 8.0 at 120°C for 3 min.



Immunohistochemical staining of paraffin-embedded Adenocarcinoma of Human colon tissue using anti-EIF2AK2 mouse monoclonal antibody. Heat-induced epitope retrieval by EDTA solution buffer pH 8.0 at 120°C for 3 min.



Immunohistochemical staining of paraffin-embedded Human spleen tissue within the normal limits using anti-EIF2AK2 mouse monoclonal antibody. Heat-induced epitope retrieval by EDTA solution buffer pH 8.0 at 120°C for 3 min.