

## Product datasheet for **TA813282**

### **p38 (MAPK14) Mouse Monoclonal Antibody [Clone ID: OT15A6]**

#### **Product data:**

Product Type:	Primary Antibodies
Clone Name:	OT15A6
Applications:	WB
Recommended Dilution:	WB 1:500
Reactivity:	Human, Mouse, Rat
Host:	Mouse
Isotype:	IgG2b
Clonality:	Monoclonal
Immunogen:	Human recombinant protein fragment corresponding to amino acids 2-360 of human MAPK14 (NP_620581) produced in E.coli.
Formulation:	PBS (pH 7.3) containing 1% BSA, 50% glycerol and 0.02% sodium azide.
Concentration:	1 mg/ml
Purification:	Purified from mouse ascites fluids or tissue culture supernatant by affinity chromatography (protein A/G)
Conjugation:	Unconjugated
Storage:	Store at -20°C as received.
Stability:	Stable for 12 months from date of receipt.
Predicted Protein Size:	41.1 kDa
Gene Name:	mitogen-activated protein kinase 14
Database Link:	<a href="#">NP_620581</a> <a href="#">Entrez Gene 26416 Mouse</a> <a href="#">Entrez Gene 81649 Rat</a> <a href="#">Entrez Gene 1432 Human</a> <a href="#">Q16539</a>



[View online »](#)

**Background:**

The protein encoded by this gene is a member of the MAP kinase family. MAP kinases act as an integration point for multiple biochemical signals, and are involved in a wide variety of cellular processes such as proliferation, differentiation, transcription regulation and development. This kinase is activated by various environmental stresses and proinflammatory cytokines. The activation requires its phosphorylation by MAP kinase kinases (MKKs), or its autophosphorylation triggered by the interaction of MAP3K7IP1/TAB1 protein with this kinase. The substrates of this kinase include transcription regulator ATF2, MEK2, and MAX, cell cycle regulator CDC25B, and tumor suppressor p53, which suggest the roles of this kinase in stress related transcription and cell cycle regulation, as well as in genotoxic stress response. Four alternatively spliced transcript variants of this gene encoding distinct isoforms have been reported. [provided by RefSeq, Jul 2008]

**Synonyms:**

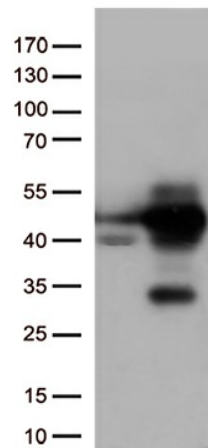
CSBP; CSBP1; CSBP2; CSPB1; EXIP; Mxi2; p38; p38ALPHA; PRKM14; PRKM15; RK; SAPK2A

**Protein Families:**

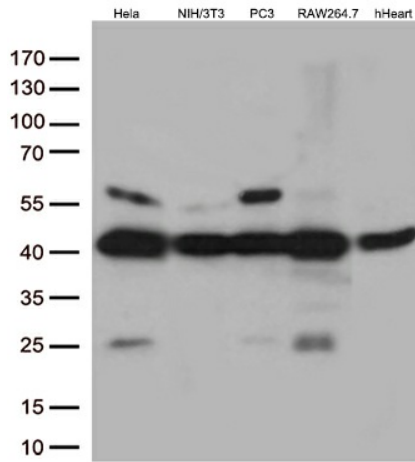
Druggable Genome, Protein Kinase

**Protein Pathways:**

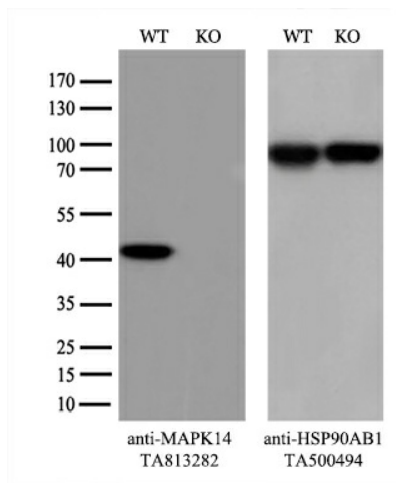
Amyotrophic lateral sclerosis (ALS), Epithelial cell signaling in Helicobacter pylori infection, Fc epsilon RI signaling pathway, GnRH signaling pathway, Leukocyte transendothelial migration, MAPK signaling pathway, Neurotrophin signaling pathway, NOD-like receptor signaling pathway, Progesterone-mediated oocyte maturation, RIG-I-like receptor signaling pathway, T cell receptor signaling pathway, Toll-like receptor signaling pathway, VEGF signaling pathway

**Product images:**

HEK293T cells were transfected with the pCMV6-ENTRY control (Cat# [PS100001], Left lane) or pCMV6-ENTRY MAPK14 (Cat# [RC206605], Right lane) cDNA for 48 hrs and lysed. Equivalent amounts of cell lysates (5 ug per lane) were separated by SDS-PAGE and immunoblotted with anti-MAPK14 (Cat# TA813282)(1:500).



Western blot analysis of extracts (35ug) from 4 different cell lines and human Heart tissue lysates by using anti-MAPK14 monoclonal antibody (1:500).



Equivalent amounts of cell lysates (10 ug per lane) of wild-type HEK293T cells (WT, Cat# LC810293T) and MAPK14-Knockout HEK293T cells (KO, Cat# [LC810821]) were separated by SDS-PAGE and immunoblotted with anti-MAPK14 monoclonal antibody TA813282 (1:500). Then the blotted membrane was stripped and reprobed with anti-HSP90 antibody as a loading control.