

Product datasheet for **TA813273**

MICA Mouse Monoclonal Antibody [Clone ID: OTI2C3]

Product data:

Product Type:	Primary Antibodies
Clone Name:	OTI2C3
Applications:	FC, WB
Recommended Dilution:	WB 1:500-1000, FLOW 1:100
Reactivity:	Human
Host:	Mouse
Isotype:	IgG1
Clonality:	Monoclonal
Immunogen:	Full length human recombinant protein of human MICA (NP_000238) produced in HEK293T cell.
Formulation:	PBS (pH 7.3) containing 1% BSA, 50% glycerol and 0.02% sodium azide.
Concentration:	1 mg/ml
Purification:	Purified from mouse ascites fluids or tissue culture supernatant by affinity chromatography (protein A/G)
Conjugation:	Unconjugated
Storage:	Shipped at -20°C or with ice packs, Upon delivery store at -20°C. Dilute in PBS(pH7.3) if necessary. Stable for 12 months from date of receipt. Avoid repeated freeze-thaws.
Stability:	Stable for 12 months from date of receipt.
Predicted Protein Size:	42.9 kDa
Gene Name:	MHC class I polypeptide-related sequence A
Database Link:	NP_000238 Entrez Gene 100507436 Human Q29983



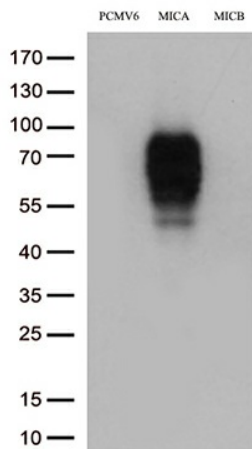
[View online »](#)

Background:

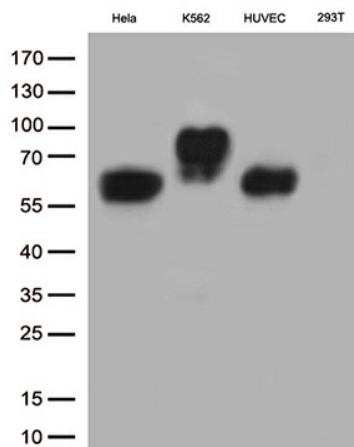
This gene encodes the highly polymorphic major histocompatibility complex class I chain-related protein A. The protein product is expressed on the cell surface, although unlike canonical class I molecules it does not seem to associate with beta-2-microglobulin. It is a ligand for the NKG2-D type II integral membrane protein receptor. The protein functions as a stress-induced antigen that is broadly recognized by intestinal epithelial gamma delta T cells. Variations in this gene have been associated with susceptibility to psoriasis 1 and psoriatic arthritis, and the shedding of MICA-related antibodies and ligands is involved in the progression from monoclonal gammopathy of undetermined significance to multiple myeloma. Alternative splicing of this gene results in multiple transcript variants. [provided by RefSeq, Jan 2014]

Synonyms:

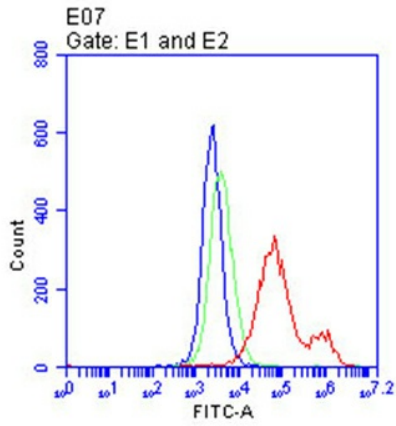
MIC-A; PERB11.1

Product images:


HEK293T cells were transfected with the pCMV6-ENTRY control (Left lane) or pCMV6-ENTRY MICA/MICB ([RC204447]/[RC222315], Middle/Right lane) cDNA for 48 hrs and lysed. Equivalent amounts of cell lysates (5 ug per lane) were separated by SDS-PAGE and immunoblotted with anti-MICA.(1:1000)



Western blot analysis of extracts (35ug) from 4 cell lines lysates by using anti-MICA monoclonal antibody. (1:500)



Flow cytometric analysis of living 293T cells transfected with MICA overexpression plasmid ([RC204447]), Red)/empty vector ([PS100001], Blue) using anti-MICA antibody (TA813273). Cells incubated with a non-specific antibody (Green) were used as isotype control.(1:100)